

Appendix A6.2 Relevant Local Area Plans

A review of significant planning related schemes and forthcoming development within or in close proximity to the subject areas was undertaken as part of the desktop review process. These included:

- 1) Dardistown Local Area Plan (LAP), 2013
- 2) Portmarnock South Local Area Plan (LAP), 2013
- 3) Baldoyle-Stapolin Local Area Plan (LAP), 2013

1) *Dardistown Local Area Plan (LAP), 2013*

The Dardistown LAP lands have been identified as an important strategic development land bank located to the south of Dublin Airport. The LAP lands include the future Dardistown Metro Stop on the Metro North line which will be the first southbound stop from the airport.

Currently, much of the lands are in agricultural use however, industrial, commercial, sports and recreational uses are also present. St. Anne's Business Park is situated towards the south-west area of the lands, accessible from Naul Road. Sports and recreational facilities provided by The Royal College of Surgeons and a number of other sporting clubs including Ballymun Kickhams GAA and Whitehall Rangers AFC club grounds are situated within the LAP area. The Kart City racing track is also located within the area.

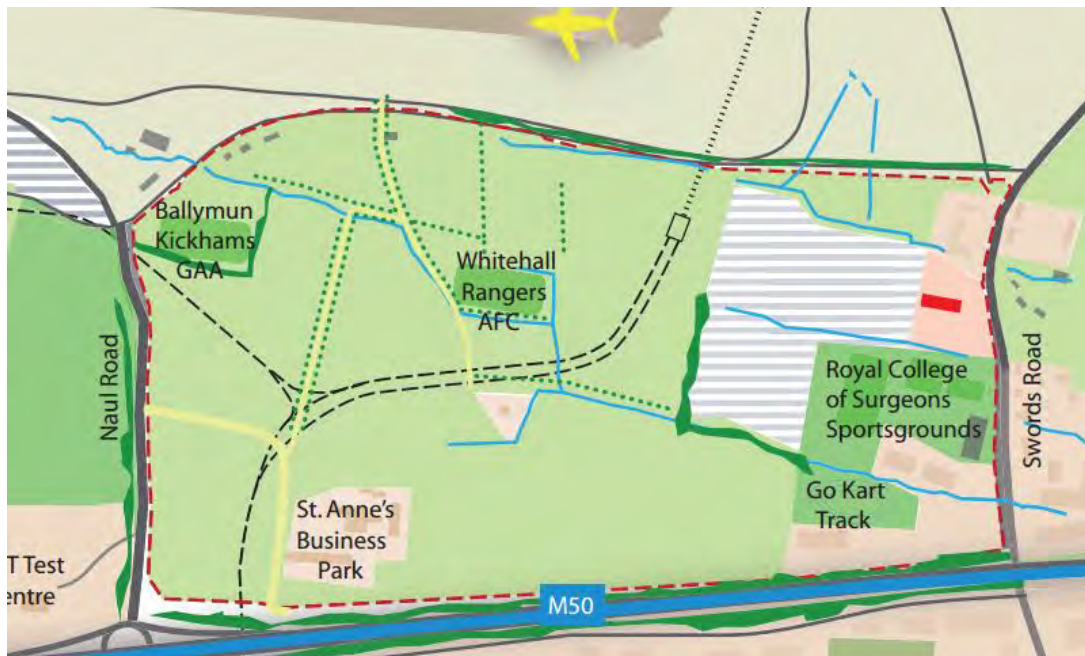


Figure A6.1 Local Context and Established Land Uses as extracted from the Dardistown LAP 2013 (Figure 3.2 p.15)

The proposed orbital pipeline runs along the southern boundary of the LAP lands before turning to the north passing through the centre of the lands along the western boundary of the *Quickpark* carpark, before continuing to the east and running along the northern boundary lands for approximately 500m (as illustrated on Figure A6.2).



Figure A6.2 Dardistown LAP lands with orbital pipeline route indicated in purple

2) Portmarnock South Local Area Plan (LAP), 2013

The Portmarnock LAP sets a framework for a new residential community south of Portmarnock village. The Portmarnock South LAP lands (86 ha) are strategically positioned in close proximity to the DART commuter service and the Dublin-Belfast railway line. The land is currently undeveloped. The phasing plan set out in the LAP is focused on residential development in the northwest portion of the lands, followed by an outward phased development into a central area of the land. The outfall pipeline is proposed to run adjacent to the southern boundary of the LAP lands (refer to Figure A6.3). This part of the LAP lands is reserved for open space and parkland.

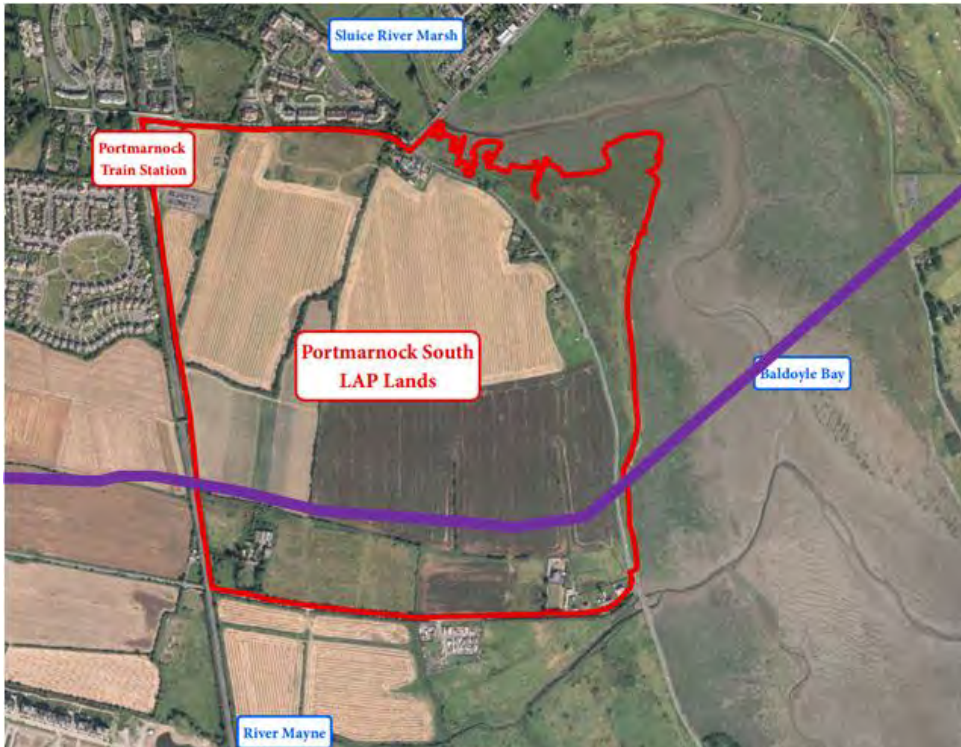


Figure A6.3 Portmarnock South LAP lands with orbital pipeline route indicated in purple

3) *Baldoyle-Stapolin Local Area Plan (LAP), 2013*

The Baldoyle-Stapolin LAP lands are located directly south of the Portmarnock South LAP lands referred to above. The LAP seeks to build on development within the plan lands, which were the subject of a 2001 Action Area Plan, setting out a framework for the future development of the remaining lands on the site and encompassing community facilities, transport and infrastructure, heritage and environmental considerations, amongst others.

The proposed outfall pipeline route falls outside the boundary of the site, but its northern lands are location within the study area of this assessment.



Figure A6.4 Baldoye-Stapolin Local Area Plan (LAP), 2013