

water.ie/nwrp

UISCE
ÉIREANN : IRISH
WATER

National Water Resources Plan

Phase 2

Draft Regional Water Resources Plan
Eastern Midlands Region
Statutory Consultation



Part of **ervia** group

Regional Water Resources Plan (RWRP) Eastern and Midlands Region



The plan will set out how we can **balance the amount of drinking water we can supply with the demand for water that is needed over the short, medium and long term.**

Population growth of **25%** from 2019 to 2044

76,000 businesses served

163 individual ground water sources

201 Water Treatment Plants

2.5 million water supply customers
60% population

209 water supply sources

75% agriculture and **4%** urban by area



Key Positive Outcomes of the RWRP Eastern and Midlands

We will **reduce leakage** by 45%.

We will **improve the level of service** provided to all customers in the Region for all-weather events significantly reducing the risk of outages and water restrictions.

89% of our customers in the region will obtain their water from **an interconnected water supply**.

We will **upgrade 136 WTPs** in the region to reduce water quality risk.

We will provide **4 new WTPs** - Birdhill, Bailieboro, Ahascragh and Carlow Central.

We will **decommission 66 WTPs** and 45% of our potentially unsustainable surface water sources.

Our three pillar approach will ensure we have a safe, secure, reliable and sustainable drinking water supply for everyone



Introduction

The National Water Resources Plan (NWRP) is Irish Water's 25-year strategic plan for the public water supply in Ireland.

The NWRP allows us to plan for our water supplies in a consistent way and to transform the public water supply in Ireland over the next 25-years. It allows us to identify the needs within our existing supplies, and to consider the challenges and opportunities that will arise. These include, changing policy and legislation, climate change, environmental sustainability, growth and economic development.

Within the NWRP we will assess all of the 535 individual supplies that form the national public water supply and develop a clear approach to address the current and future needs across these supplies.

What is the objective of the National Water Resources Plan?

The objective of the NWRP is to meet our customer and communities needs over the short, medium, and long term, by ensuring safe, secure, sustainable, and reliable water supplies.



What is happening now?

As this is the first NWRP, the preparation of the plan has been divided into two distinct phases, the combination of which will become the final NWRP.

In Phase 1 the Framework Plan, we set the standards we would like our supplies to achieve and processes we will follow to address needs across our supplies. Following public consultation in early 2021, the Framework Plan is now complete and can be found at www.water.ie/nwrp

In Phase 2 of the NWRP, we summarise the needs across the 535 individual water supplies and identify the solutions to address these needs. Due to the large number of supplies in Ireland, we will deliver Phase 2 as four Regional Water Resource Plans:

- Regional Water Resources Plan: North West
- Regional Water Resources Plan: South West
- Regional Water Resources Plan: South East
- Regional Water Resources Plan: Eastern and Midlands

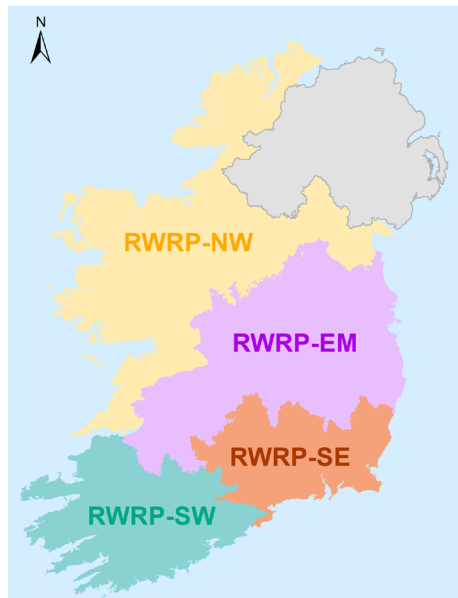


Figure 1. Regional Areas of the NWRP

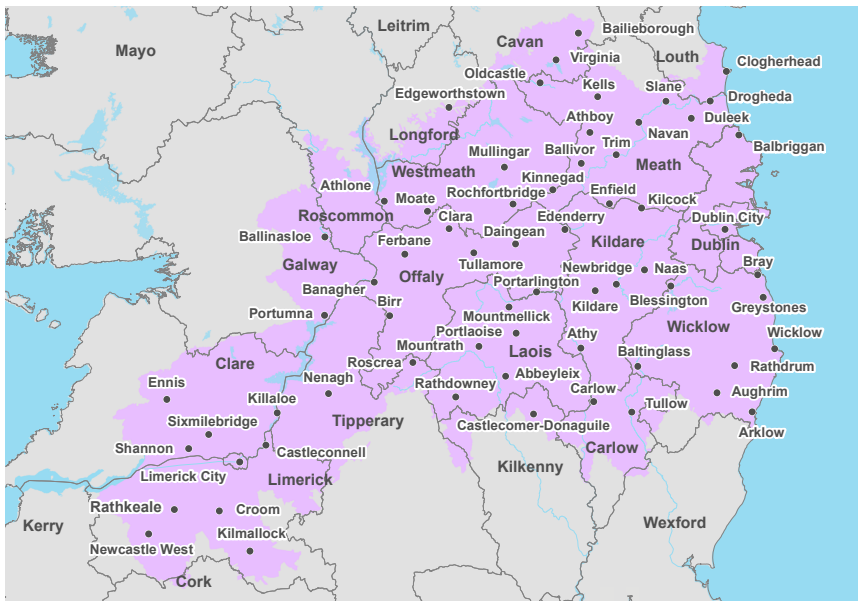
Each of the four draft RWRPs and associated environmental reports will have their own public consultation phases, which will be carried out over the course of 2021/2022.

As part of each Regional Plan we will:

- Apply the Framework methodology to the water supplies in the region
- Develop regional solutions for all water supplies within these group areas

The first Plan to be consulted on will be the draft Regional Water Resources Plan: Eastern and Midlands (RWRP-EM).

At the end of Phase 2 the outcome of the four plans will be combined and prioritised collectively.



Regional Water Resources Plan Eastern and Midlands

The above map outlines the area which is covered by the RWRP-EM. A full list of townlands, towns, settlements and counties included in the RWRP-EM can be found

www.water.ie/rwrp/easternmidlands

What is the Eastern and Midlands Region?

The RWRP-EM is the largest of the four regions defined as part of the NWRP in both land area and population size. It includes 19 counties encompassing 24 Local Authorities. The Region covers approximately 20,900 square kilometres extending from the Shannon Estuary in the south west, towards the large River Boyne catchment and Greater Dublin Area (GDA) in the north east. The Region is the primary economic Region of Ireland containing Dublin and Limerick City which provides more than 1 million jobs.

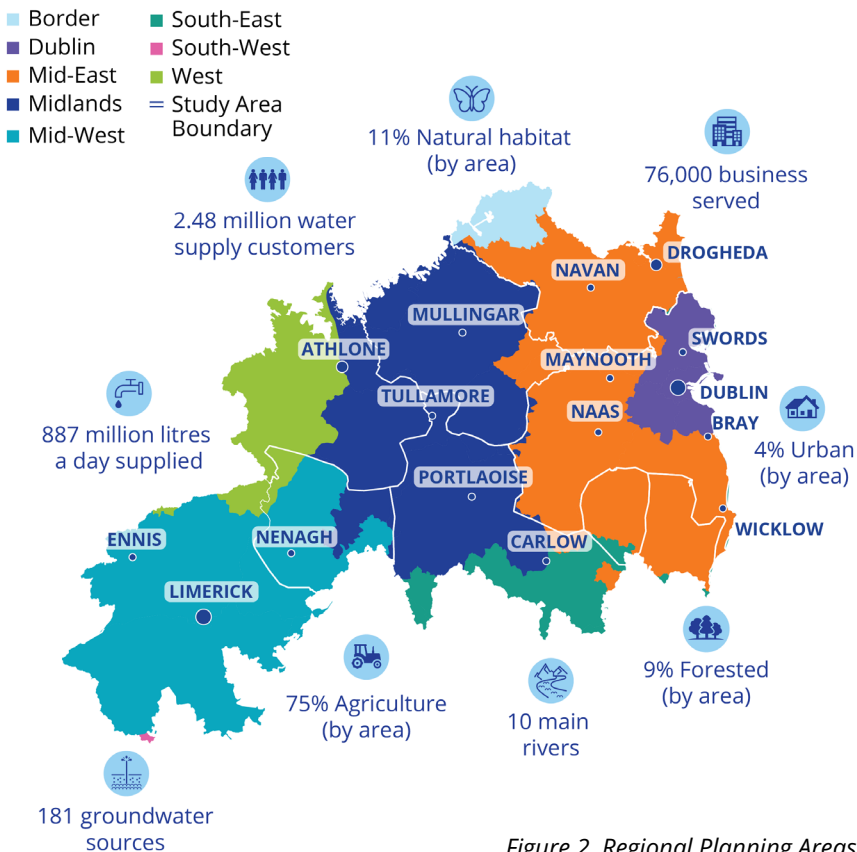


Figure 2. Regional Planning Areas

What are the issues in the Region?

In the Eastern and Midlands Region there are 201 Water Treatment Plants that feed water into 134 stand-alone water supplies known as water resources zones (WRZs). These WRZs provide water to all of the cities, towns, villages and rural properties in the Region that are connected to the public water supply.

When we view these supplies using the risk standards, we set out in the Framework plan, we have identified the following needs which must be addressed as part of the draft RWRP-EM:

- 66% of the WRZs do not have the correct capacity to meet current or future needs
- 90% of the Water Treatment Plants need some form of investment to reduce risk to water quality
- 70% of the WRZs at risk of interruptions to supply
- Some of our water abstractions may be unsustainable

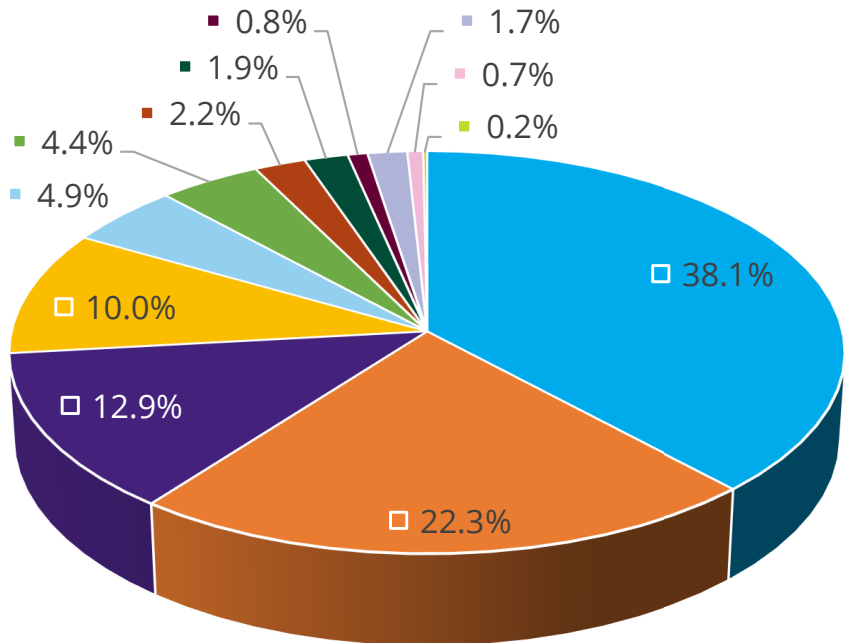
How do we review this in our draft regional plan?



Within the Plan we identify solutions to address these needs, under three pillars, Use Less (water conservation), Lose Less (leakage reduction) and Supply Smarter (sustainable water supplies).

As part of the draft RWRP-EM, we reviewed 1,128 unconstrained options, and developed 591 feasible options to address the needs we identified in the Region.

These feasible options included an extensive list of option types, including, groundwater and surface water sources, reservoirs and water transfers.



■ Groundwater (225)	■ Transfers (13)
■ Rationalisation (132)	■ Conjunctive Use (11)
■ Surface water (76)	■ Effluent Reuse (5)
■ Cross Study Area Supply (59)	■ Desalination (10)
■ Network Improvements (29)	■ River Bank Filtration (4)
■ Upgrade Water Treatment Plant (26)	■ Advanced Leakage Reductions (1)

We then assessed these to develop a preferred approach for each of the water supplies.

What is the outcome of our plan?

The development of the draft RWRP- EM has for the first time allowed Irish Water to collectively assess needs across all of the 134 water supplies in the region, in terms of quality, quantity reliability and sustainability. The regional plan allows us to consider local options to resolve identified needs within individual supplies and also larger regional options that can address needs across multiple supplies.

The preferred approach for the Region, involves:

- Reduction of the number of WRZs in the Eastern and Midlands Region from 134 to 93.
- Development of larger interconnected WRZs for the larger urban areas.
- Upgrades to 136 existing water treatment plants, in terms of size and performance.
- Development of four new Water Treatment Plants (WTPs).
- Decommissioning 66 WTPs.
- Interconnecting 50 supplies via 860 kilometres of trunk mains.
- Reducing leakage from the 2019 baseline of 38% of regional demand to 22% of regional demand. This represents a 45% reduction in leakage from 2019 to 2034. This is achieved through, pressure management, active leakage control, find and fix and asset replacement.

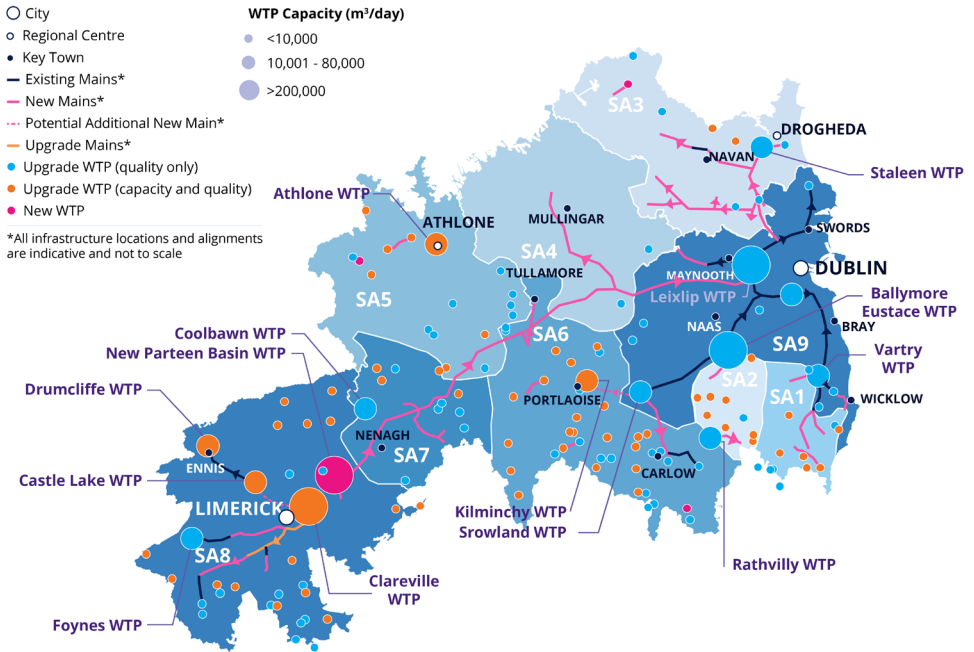


Figure 3.Regional Preferred Approach

What does this mean for consumers in the region?

The preferred approach will provide the best overall outcome for the Region, particularly in relation to environmental, ecology and resilience outcomes. This will result in:

- Improved performance across all of the water supplies in terms of quality and quantity.
- Strategic transformation from the existing fragmented supply to a more resilient and sustainable interconnected supply.
- All 93 water resources zones in the Eastern and Midlands Region will be able to provide improved reliability and meet a minimum 1 in 50 Level of Service during normal, dry, drought and winter conditions.

- All Water Resource Zones will be resilient with improved environmental sustainability.
- Customer benefits in terms of increased reliability and reduced occurrence of outages across our supplies.
- Customer benefits in terms of reduced water quality risk and the instances of boil water notices.
- Improved resilience, with 95% of the population supplied via sources with impounding storage or aquifer storage that will allow us to manage seasonal variation in water availability and drought events.
- Sources that are more environmentally sustainable and allow us to adapt to climate change and align with the requirements of the Water Framework Directive and Habitats Directive.
- Improved operational control across our water supplies, and ability to react to adverse events.
- Improved efficiency of our distribution networks in terms of leakage, pressure and strategic storage.
- Ability to facilitate growth and economic development.



How can I get involved?

Irish Water are now seeking feedback on the public consultation for the draft RWRP: Eastern and Midlands and associated SEA Environmental Report and Natura Impact Statement.

A thirteen-week statutory public consultation will run from the 14 December 2021 to 14 March 2022 during which time the draft RWRP Eastern and Midlands and associated environmental reports can be viewed and downloaded at www.water.ie/rwrp/easternmidlands and at your local authority's planning office during their normal opening hours.

This is your opportunity to feed into the process of how we identify the issues and determine what the opportunities are for water supply in your area. We are also seeking your feedback on how we will develop options to address any problems identified, before applying them to specific areas and options.

All submissions will be taken into consideration when and responses to the issues raised will be summarised in a Consultation Report which will be published on www.water.ie/rwrp/easternmidlands

Submissions will not be responded to individually, but each will be listed in the consultation report. Individual submissions will be reported anonymously and feedback from organisations will be attributed to them. Feedback received outside the scope of the draft RWRP- EM and the associated environmental reports will not be considered as part of this public consultation process and will not be reported on. Any feedback in relation to in flight Irish Water projects, or in

reference to any other area of the Irish Water business should be sent directly to those project teams', unless applicable to how they are included in the RWRP-EM. Information on Irish Water projects and contact details can be found on www.water.ie

In line with the General Data Protection Regulations (GDPR) effective from 25 May 2018, Irish Water's updated Privacy Notice, is available to view online at www.water.ie/privacy-notice

Have your say

Any member of the public wishing to make a submission can do so by email or post as follows: **by 14 March 2022**

Email: **nwrp@water.ie**
Post: **National Water Resources Plan,
Irish Water, P.O. Box 13216,
Glenageary, Co. Dublin**
Freephone: **1800 46 36 76**

A dedicated helpline is available for anyone who would like to discuss any aspect of the consultation prior to making a submission.

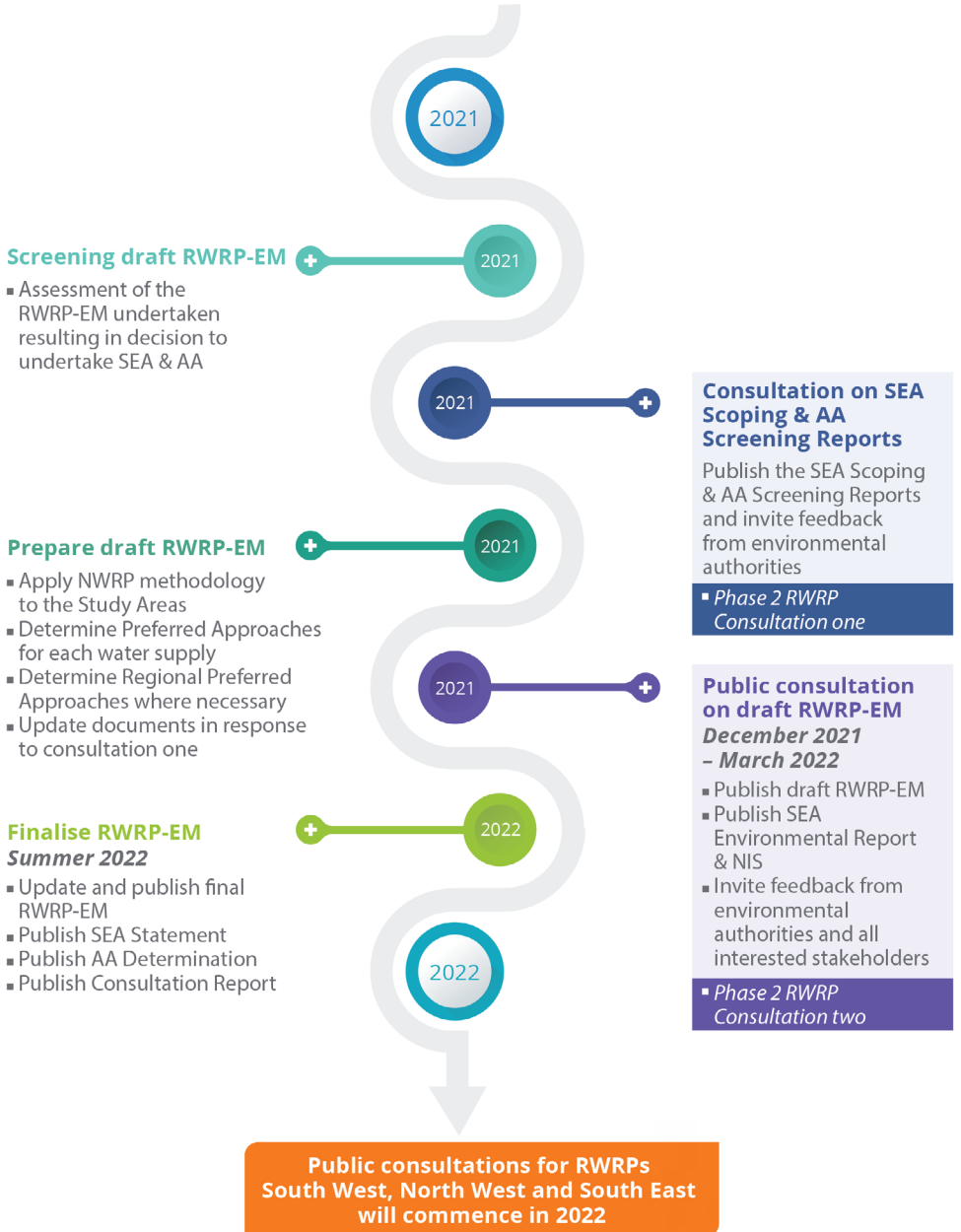
Scope of the Consultation Questions

In order to help members of the public or organisations in making a submission, and to ensure clarity on the scope of what we would like consultees to consider in their feedback, Irish Water is inviting submissions on the following specific consultation questions:

1. The Eastern and Midlands Region baseline is discussed in Section 2 of the draft RWRP- EM. Do you have any comments on the Eastern and Midlands Region or in respect of the population growth and economic development and how this is considered in our water resources planning approach?
2. Within the Eastern and Midlands Region we consider 134 water supplies (Water Resource Zones) represented across nine (9) Study Areas. Do you have any comments on the Study Area delineation?
3. Section 3 of the draft RWRP-EM and each of the Technical Appendices 1-9 outline the Need (Deficits) in both Quantity and Quality across the Region and in each of the Study Areas. Do you have any comment on the Need (Deficit)?
4. Section 6 and the Technical Appendices 1-9 of the draft RWRP-EM summarises our Options Development Process. Do you have any comments on how the Feasible Options for the Water Resource Zones (WRZs), Study Areas and the Region have been identified?

5. Section 7 sets out how the Preferred Approach is identified at WRZ and Study Area Level. Each Preferred Approach will outline how it intends to address the Need in the relevant study area. Technical Appendix for Study Areas 1-9 and Environmental Review for Study Areas 1-9 sets out how the Preferred Approach has been developed in more detail. Have you any feedback on any of the WRZ Preferred Approaches or Study Area Preferred Approaches?
6. The draft RWRP-EM will look at a range of solutions to meet the Need in a Water Resource Zones or Study Area. These solutions are not limited by distance, therefore, some solutions for the Water Resource Zones or Study Areas will utilise regional transfers. For example, there are 33 Water Resource Zones in the draft RWRP-EM which are capable of benefitting from regional transfers. Section 8 of the draft RWRP-EM outlines how the regional solution will be developed and compared against solutions that do not involve a regional transfer. Have you any comments on the Regional Preferred Approach?
7. Interim Solutions are outlined in Section 7 and 8 of the draft RWRP- EM and in each of the Technical Appendices 1-9. Have you any comments on this as a strategy of reducing risk to water supplies while developing our Preferred Approaches?
8. Do you have any comments on the Strategic Environmental Assessment (SEA) Environmental Report and Natura Impact Statement (NIS) which accompany the draft RWRP-EM?
9. We have produced a draft-RWRP-EM Consultation Roadmap. Do you have any comments on this?
10. How would you like Irish Water to communicate with you as the RWRPs progress?

RWRP Eastern & Midlands Public Consultation Roadmap



Next Steps

1. Once the consultation period has concluded, all feedback received during public consultation will be reviewed by the National Water Resource Plan team and relevant feedback will be incorporated into the final Regional Water Resource Plan Eastern and Midlands.
2. Consultation on the Strategic Environmental Assessment (SEA) Scoping Report for the second Regional Water Resource Plan: South West (RWRP-SW) is completed. The SEA Scoping Report was provided to specified environmental authorities, for the purposes of initial, non-statutory consultation on the scoping of the SEA for the South West Region. Following this process, the feedback obtained will be considered and reflected in the documents published for public consultation in early 2022 comprising the draft RWRP-SW and associated SEA Environmental Report and Natura Impact Statement.
3. The remaining two Regional Water Resource Plans, the North West and South East, will be consulted on in the same way, comprising both non-statutory screening and scoping consultation with environmental authorities, followed by statutory public consultations in 2022.
4. The submissions and observations received from the public consultation outlined above will be taken into consideration before adopting all four RWRPs. Once the complete NWRP has been finalised, comprising the Framework Plan and the four Regional Water Resources Plans and together they will be treated as a unified single plan.

Contact details

To make a submission on the RWRP Eastern and Midlands or for further information please contact:

Email: nwrp@water.ie

Web: www.water.ie/nwrp

Freephone: **1800 46 36 76**

**National Water Resources Plan,
Irish Water,
P.O Box 13216,
Glenageary, Co. Dublin**

General Irish Water queries

9am-5.30pm, Mon-Fri

Telephone: **Callsave 1850 448 448 or +353 1 707 2824**

Minicom: **LoCall 1890 378 378** (for hearing impaired customers with their own minicom equipment).

Please note that the rates charged for 1850 (Callsave) and 1890 (LoCall) numbers may vary across different service providers. Calls made using mobiles may be more expensive.

This publication is available in Braille, on CD and in large text format on request by calling **1850 448 448**.

ervia

Aurora
TELECOM



Gas
Networks
Ireland

UISCE
IRISH WATER