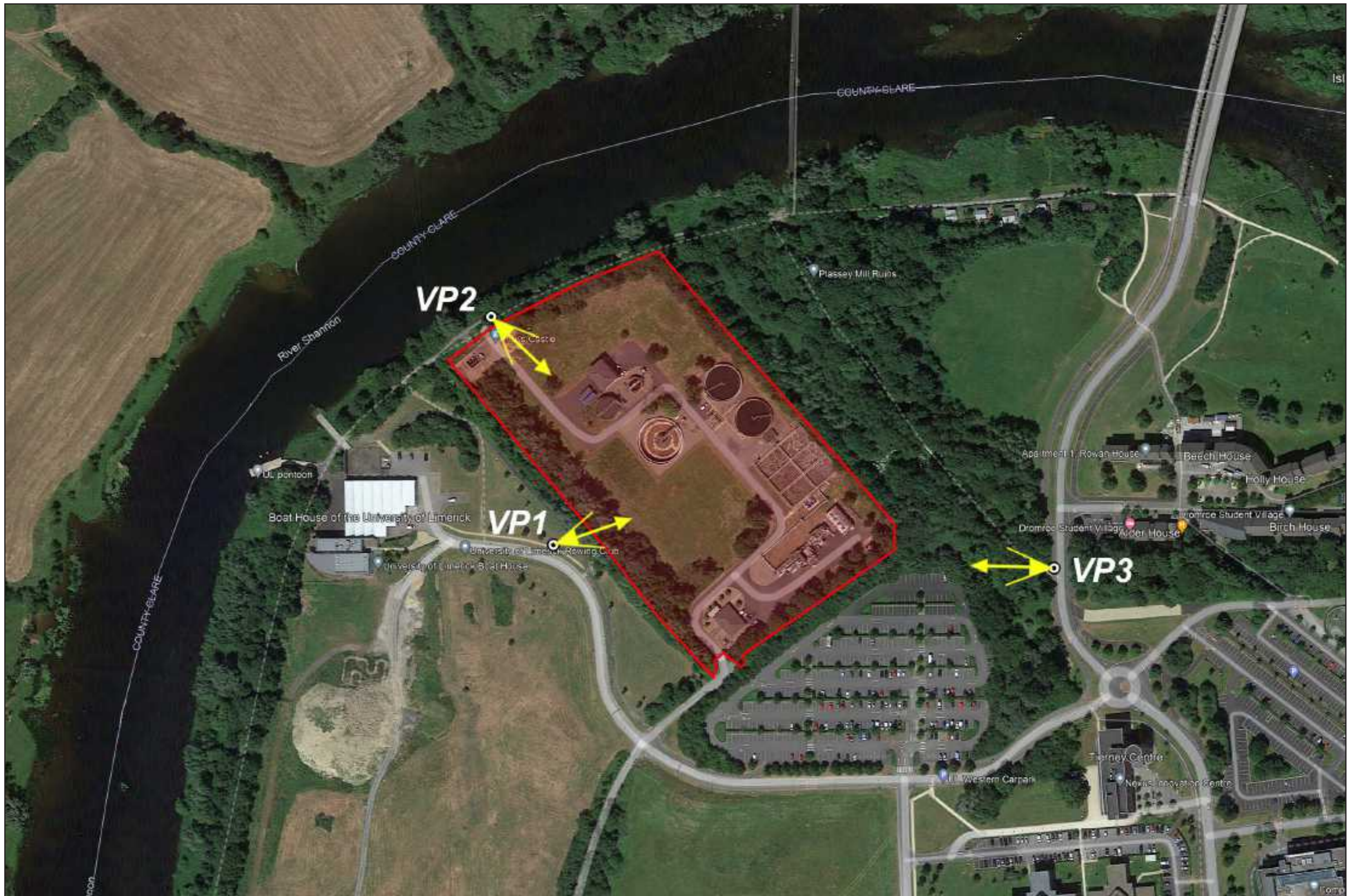


Appendix 12A: Landscape and Visual Photomontages

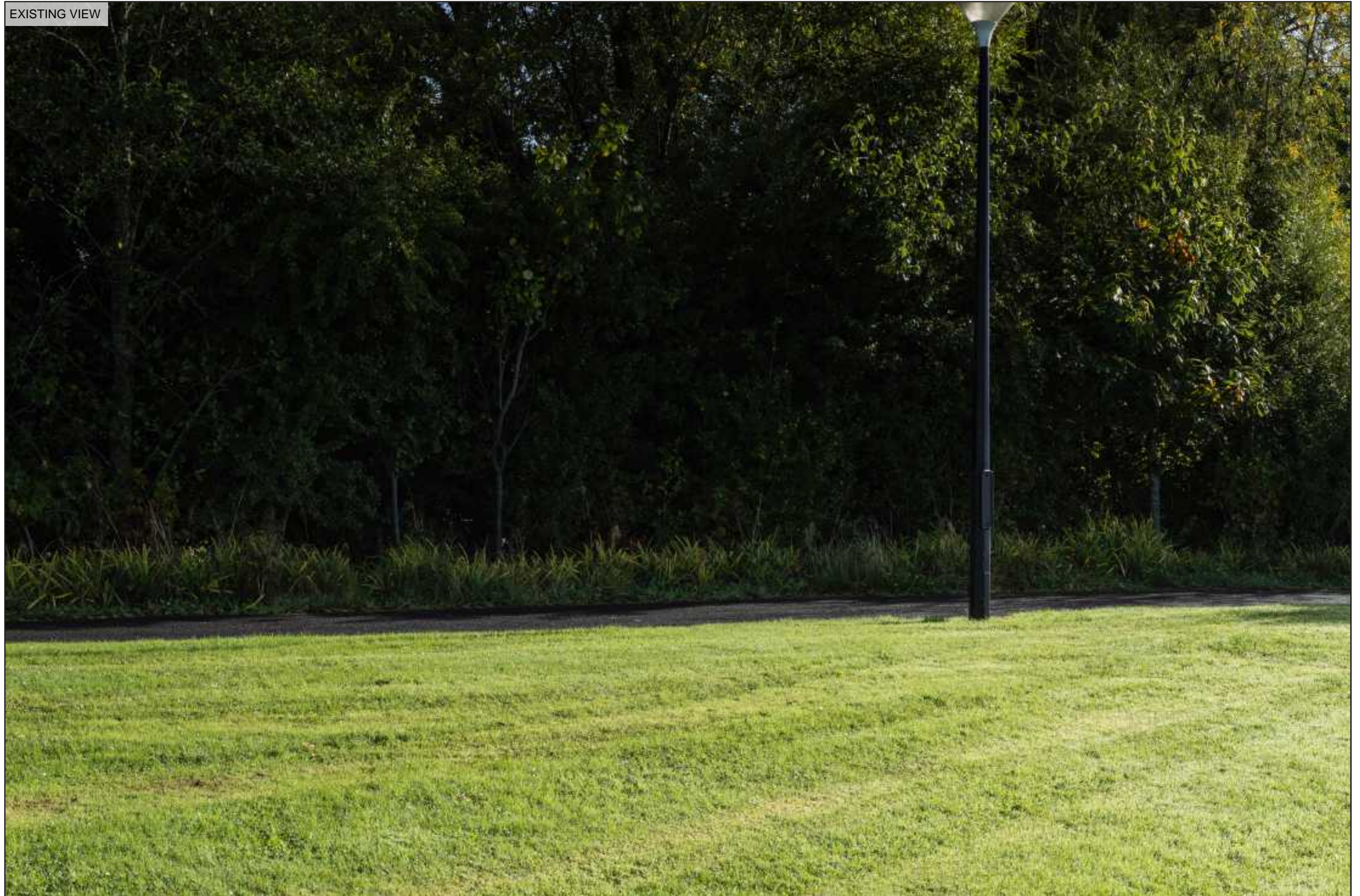
Proposed Castletroy Wastewater Treatment Plant

Photomontages

Views to support landscape and visual impact assessment



EXISTING VIEW



Viewpoint Location & Capture Information
Location (ITM): 560635.75, 658434.06
Camera Level (Metres Above Ordnance Datum): 10.1
Date & Time: 10/10/2022, 9:43am

Visibility Information
Distance to site boundary (km): 0.02
Visibility Status: Fully Screened
Direction of View: NE

Camera Information
Camera: Canon 5D Mark IV
Lens: Canon EF 50mm f1.4 USM
Focal Length: 50mm

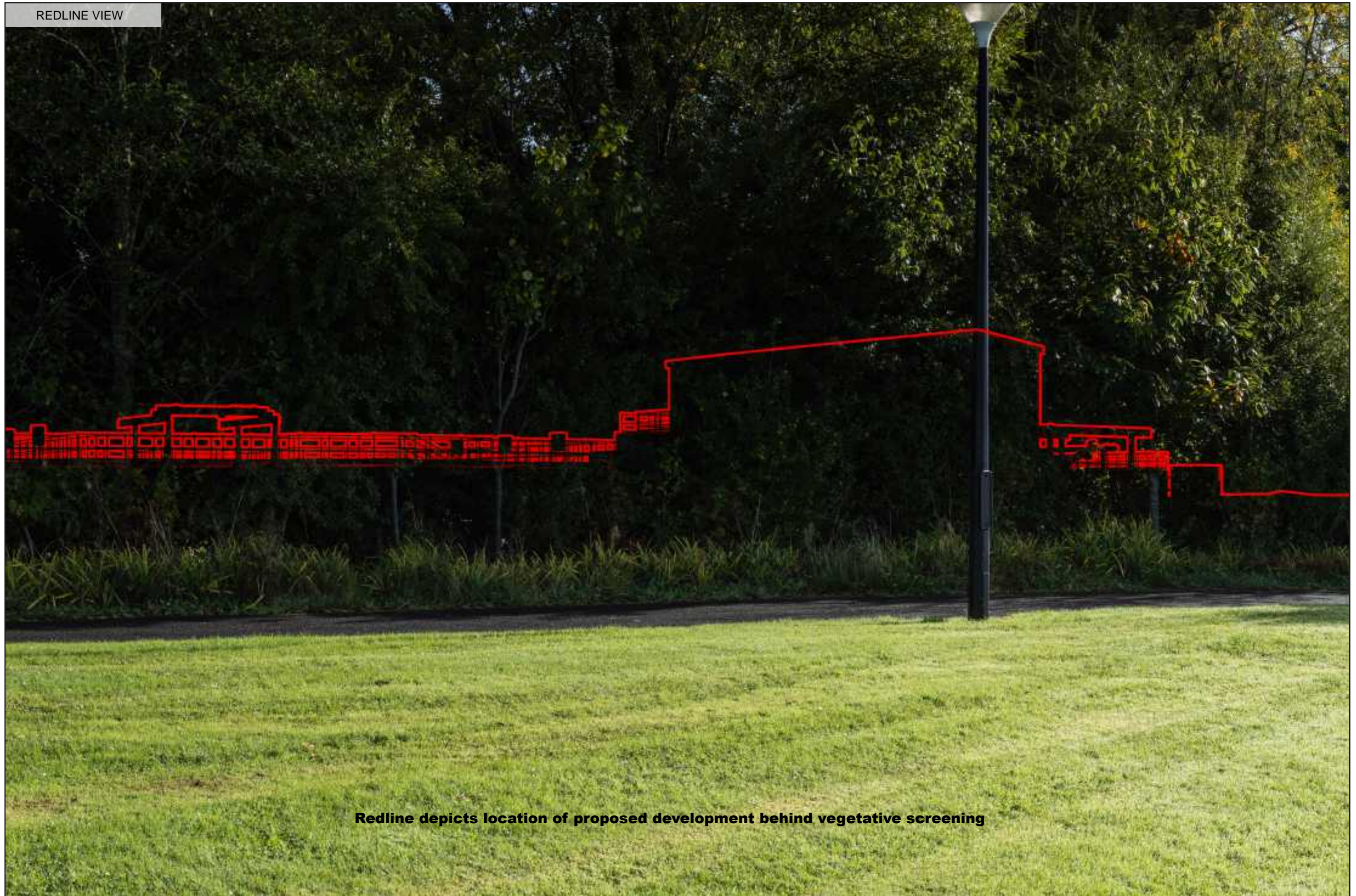
Visuals prepared by

innovision



Sligo Airport Business Park
Strandhill
Sligo
www.innovision.ie
+353(0)71 - 912 8220

REDLINE VIEW



Redline depicts location of proposed development behind vegetative screening

Viewpoint Location & Capture Information

Location (ITM): 560635.75, 658434.06
Camera Level (Metres Above Ordnance Datum): 10.1
Date & Time: 10/10/2022, 9:43am

Visibility Information

Distance to site boundary (km): 0.02
Visibility Status: Fully Screened
Direction of View: NE

Camera Information

Camera: Canon 5D Mark IV
Lens: Canon EF 50mm f1.4 USM
Focal Length: 50mm

Visuals prepared by

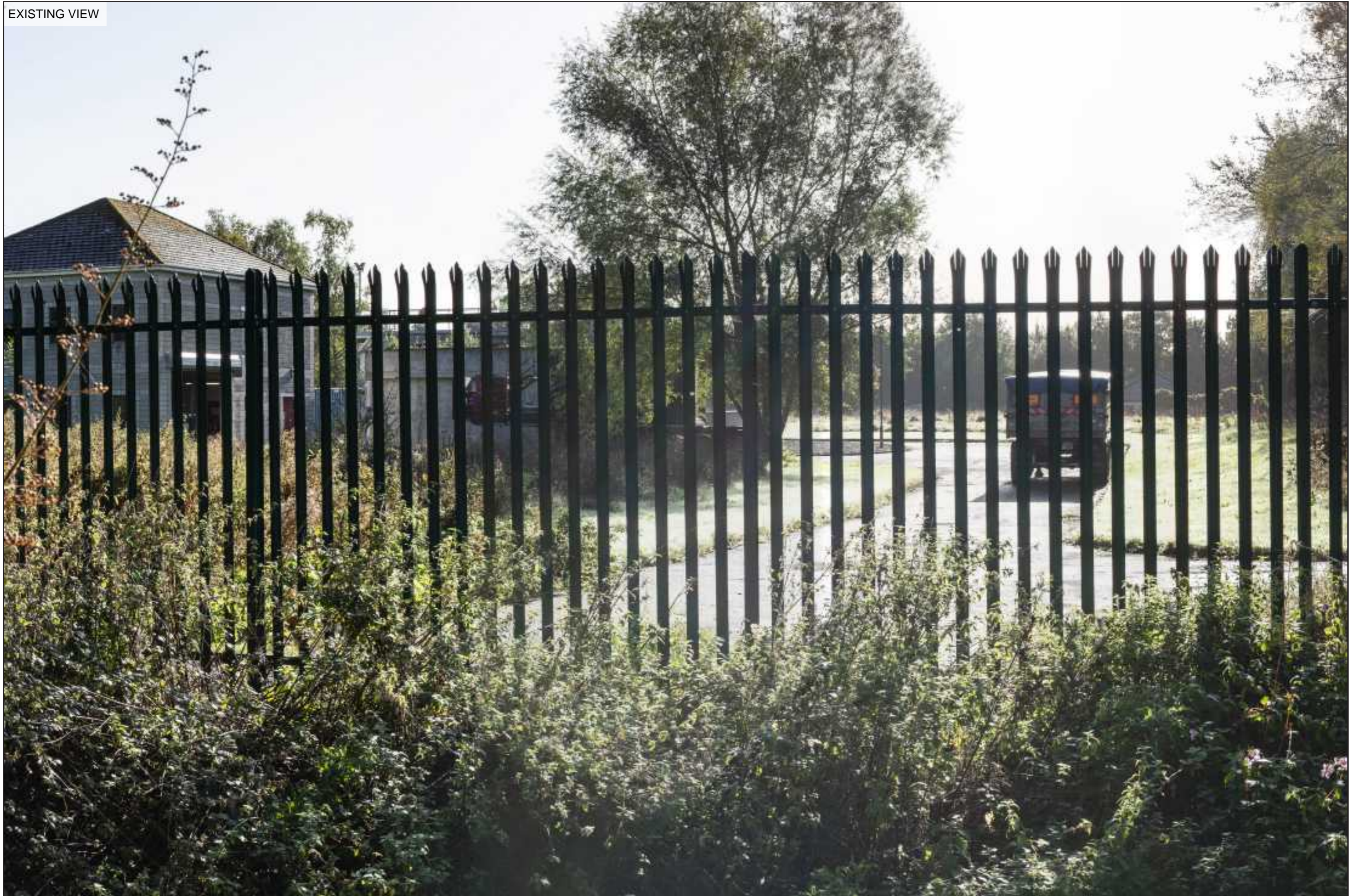
innovision



Sligo Airport Business Park
Strandhill
Sligo

www.innovision.ie
+353(0)71 - 912 8220

EXISTING VIEW



Viewpoint Location & Capture Information

Location (ITM): 560591.00, 658561.44
Camera Level (Metres Above Ordnance Datum): 8.64
Date & Time: 10/10/2022, 9:57am

Visibility Information

Distance to site boundary (km): 0.01
Visibility Status: Partially Screened
Direction of View: SE

Camera Information

Camera: Canon 5D Mark IV
Lens: Canon EF 50mm f1.4 USM
Focal Length: 50mm

Visuals prepared by

innovision



Sligo Airport Business Park
Strandhill
Sligo

www.innovision.ie
+353(0)71 - 912 8220

PHOTOMONTAGE VIEW



Viewpoint Location & Capture Information

Location (ITM): 560591.00, 658561.44
Camera Level (Metres Above Ordnance Datum): 8.64
Date & Time: 10/10/2022, 9:57am

Visibility Information

Distance to site boundary (km): 0.01
Visibility Status: Partially Screened
Direction of View: SE

Camera Information

Camera: Canon 5D Mark IV
Lens: Canon EF 50mm f1.4 USM
Focal Length: 50mm

Visuals prepared by

innovision



Sligo Airport Business Park
Strandhill
Sligo

www.innovision.ie
+353(0)71 - 912 8220

EXISTING VIEW



Viewpoint Location & Capture Information

Location (ITM): 560925.75, 658420.94
Camera Level (Metres Above Ordnance Datum): 9.2
Date & Time: 10/10/2022, 10:24am

Visibility Information

Distance to site boundary (km): 0.1
Visibility Status: Fully Screened
Direction of View: W

Camera Information

Camera: Canon 5D Mark IV
Lens: Canon EF 50mm f1.4 USM
Focal Length: 50mm

Visuals prepared by

innovision



Sligo Airport Business Park
Strandhill
Sligo

www.innovision.ie
+353(0)71 - 912 8220

REDLINE VIEW



Redline depicts location of proposed development behind vegetative screening

Viewpoint Location & Capture Information
Location (ITM): 560925.75, 658420.94
Camera Level (Metres Above Ordnance Datum): 9.2
Date & Time: 10/10/2022, 10:24am

Visibility Information
Distance to site boundary (km): 0.1
Visibility Status: Fully Screened
Direction of View: W

Camera Information
Camera: Canon 5D Mark IV
Lens: Canon EF 50mm f1.4 USM
Focal Length: 50mm

Visuals prepared by
innovision 
Sligo Airport Business Park
Strandhill
Sligo
www.innovision.ie
+353(0)71 - 912 8220