

## **APPENDIX A**

### **Advertisement**



**Greater Dublin Drainage – Public Consultation and Open Days  
Emerging Preferred Sites and Routes.  
Alternative Sites Assessment  
and Route Selection Report (Phase 2):**

The Greater Dublin Drainage Project has published a report identifying three emerging preferred site options for further consideration as the location for the proposed GDD Regional Waste Water Treatment Plant. The three sites are **Annsbrook, Newtowncorduff** and **Clonshaugh**. The report also identifies pipeline route and marine outfall options.

The full report and maps can be downloaded at [www.greaterdublindrainage.ie](http://www.greaterdublindrainage.ie)

The project team are now conducting a further round of non-statutory consultation on these three sites, the associated pipeline routes, and marine outfall options from **14th May 2012 to 6th July 2012**.

Open Days at Fingal County Hall Swords where interested parties can meet the project team are scheduled for:

**Wednesday 30th May from 2pm to 8pm;**

**Saturday 2nd June from 11am to 4pm;**

**Thursday 14th June from 2pm to 8pm;**

**Saturday 16th June 2012 from 11am to 4pm.**

All interested parties are welcome to give their views.

Further information is available from [www.greaterdublindrainage.ie](http://www.greaterdublindrainage.ie) or lo-call 1890 44 55 67. To make a submission, email [info@greaterdublindrainage.ie](mailto:info@greaterdublindrainage.ie) or post to Greater Dublin Drainage Project Manager, c/o RPS Group, West Pier Business Campus, Dun Laoghaire, Co. Dublin.

## **APPENDIX B**

### **Press Releases**



## **FINGAL CO COUNCIL IDENTIFIES NINE POTENTIAL LAND PARCELS FOR NEW WASTEWATER INFRASTRUCTURE AND ANNOUNCES FURTHER PUBLIC CONSULTATION**

**10<sup>th</sup> October 2011:** Fingal County Council has identified nine potential land parcels in the northern part of the Greater Dublin Area (GDA), within which a proposed regional wastewater treatment plant could potentially be located, along with a marine outfall and an orbital drainage system. The ASA Phase One Preliminary Screening Outcomes Report and accompanying maps are published on [www.greaterdublindrainage.ie](http://www.greaterdublindrainage.ie)

The new infrastructure is needed to provide sustainable and reliable drainage and wastewater treatment for the GDA to meet current and future economic, industrial and residential demands, to protect the environment and to meet the EU Water Framework Directive standards. Fingal County Council will spend the next six weeks between 10<sup>th</sup> October and 18<sup>th</sup> November consulting with the public and will hold Open Days with the Project Team at County Hall, Swords.

The attached map shows the locations of the nine identified land parcels. Maps and details of the land parcels are available to download at: [www.greaterdublindrainage.ie](http://www.greaterdublindrainage.ie). The Report with the maps is also available on display at County libraries in Balbriggan, Baldoyle, Blanchardstown, Garristown, Howth, Malahide, Rush, Skerries, and Swords, the four mobile libraries and the two planning counters: Fingal County Hall, Swords and Blanchardstown Civic Offices. CDs of the Report can be purchased for €5 and hard copies for €30 from the two planning counters.

The nine land parcels are:

- **Annsbrook**, approximately 2.5km north east of Ballyboghil (Ballyboughal) (62 hectares).
- **Baldurgan**, approximately 1.6km south east of Ballyboghil (57 ha).
- **Cloghran**, approximately 2.2km east of Dublin Airport and 3.3km south of Swords (32 ha).
- **Clonshagh** (Clonshaugh), approximately 2.5km east of Dublin Airport and 1.3km north of Belcamp and Darndale (40 ha).
- **Cookstown**, approximately 2.5km south east of Ballyboghil (80 ha).
- **Newtowncorduff**, approximately 2.2km west of Lusk (43 ha).
- **Rathartan**, approximately 2 km west of Rush and 3km to the east of Lusk (41 ha).
- **Saucerstown**, approximately 3.3km north west of Swords (36 ha).
- **Tyrrelstown Little**, approximately 2.8km north east of Lusk and 3.6km north west of Rush (104 ha).

Each of the nine potential land parcels is bigger than the approximately 20 hectares that will be required for the proposed new regional wastewater treatment plant, which will cater for wastewater for an estimated 700,000 population equivalent, with the majority of the load coming from the Fingal County Council area.



“The Report published today shows how we mapped existing terrestrial and coastal environmental constraints and developed prudent buffer zones from sensitive receptors to identify areas in which a wastewater treatment works can be located”, says Peter O’Reilly, Project Engineer, Fingal Co Council. “We will now assess these nine land parcels as potential locations in which to site the regional wastewater treatment plant. We will also assess the routes for the orbital drainage system and the marine outfall pipe locations. These potential locations and routes will be assessed against a range of criteria that include human issues, environmental impacts, technical and cost considerations as the next step in identifying the optimum sites for this vital new infrastructure.”

“We invite local people and all interested stakeholders to attend at any of four Open Days to be held by the Project Team at Fingal County Hall, Swords during October and November. People can also contact the Project Team by phone and email or in writing. Feedback from the Open Days and from all other stakeholder contacts will inform decisions on the eventual preferred site, which may or may not be one of these nine land parcels”, he said. “We are moving forward with these nine potential land parcels based on our current information. Site specific information, more in-depth desk-top research and site surveys, as well as feedback from the public are needed now to rule out any unsuitable land parcel and to assist in identifying the best location,” he said.

The dates and times for the Open Days in Fingal County Council’s Swords headquarters are:

- Saturday 22<sup>nd</sup> October from 11am to 4pm,
- Wednesday 26<sup>th</sup> October from 2pm to 8pm,
- Thursday 3<sup>rd</sup> November from 2pm to 8pm and
- Saturday 5<sup>th</sup> November from 11am to 4pm.

Comments and queries can be sent to [info@greaterdublindrainage.ie](mailto:info@greaterdublindrainage.ie), the Project Team can be contacted at 1890 44 55 67 or people can write to Greater Dublin Drainage Project Manager, C/O RPS Group, West Pier Business Campus, Dun Laoghaire, Co Dublin.

**ENDS**

**Map Attached:** For further information: Mary Murphy : 087 233 6415  
Fingal County Council Press Office: 01 890 5998

**FINGAL COUNTY COUNCIL EXTENDS DATE FOR RECEIVING SUBMISSIONS ON GREATER DUBLIN DRAINAGE PROJECT UNTIL 2<sup>ND</sup> DECEMBER TO FACILITATE LOCAL COMMUNITIES MAKING SUBMISSIONS**

Friday 11<sup>th</sup> November 2011: Fingal County Council is to extend the date by which people can make submissions on the potential locations for a regional wastewater treatment plant, an orbital sewer and a marine outfall in north County Dublin, until Friday 2<sup>nd</sup> December.

“We want to give more time to people who are in the process of putting together a detailed submission and who are concerned that they won’t be ready by the non statutory public consultation closing date of 18<sup>th</sup> November”, says Peter O’Reilly, Project Engineer, Fingal Co Council. “Some communities have told us that they only became aware of the new wastewater infrastructure project following the announcement on 10<sup>th</sup> October that we have identified nine potential land parcels for further studies. From the start of this project earlier this year we have been consulting widely with as many people as possible in the local communities and with all interested stakeholders to make sure we gather all relevant information about the potential suitability of any of these land parcels as a location for the new regional wastewater treatment plant that will be needed by 2020.”

The Greater Dublin Drainage Project Team will continue to accept submissions for ten working days after the original 18<sup>th</sup> November closing date for this period of non statutory public consultation.

“Even if a submission reaches the Project Team after the new date of Friday 2<sup>nd</sup> December 2011, submissions can be accepted and the issues raised can be reviewed at any time throughout the Project’s development. However, individual submissions that are received after the extended submission date may not be included in the final Consultation Report on this stage of the Project”, says Peter O’Reilly. “We are holding very early stage, non-statutory public consultation on this project, so that people can give their views and have them taken into account before any decisions are made on the locations for the regional wastewater treatment works, the marine outfall for the treated wastewater and an orbital sewer.”

ENDS

For further information: Mary Murphy: 087 233 6415/Fingal Co Co Press Office:  
01 890 5998

## **The Myths and Facts about Greater Dublin Drainage Project**

Friday 18<sup>th</sup> November 2011: Fingal County Council has posted new information about the Greater Dublin Drainage project on the [www.greaterdublindrainage.ie](http://www.greaterdublindrainage.ie) site to counteract misinformed facts circulating about the Project.

“We want to scotch a few myths and confirm the facts relating to the need for a new regional wastewater treatment plant in north Dublin, a marine outfall and a new orbital sewer, that will be needed after 2020, to augment the Ringsend wastewater Treatment Works”, said Peter O’Reilly, Project Engineer of the The Greater Dublin Drainage project. The Ringsend Wastewater Treatment Plant (WwTP) is expected to be operating at full capacity by 2020, following current plans to expand the Ringsend WWTP to its maximum capacity.

The new information includes the following information:

- The proposed new regional WwTP in North Dublin will not be the largest plant in the Country. By 2040 it will deal with approximately one third of the wastewater that will be treated at the expanded Ringsend WWTP.
- Ringsend WwTP currently treats 1.8 million population equivalents (population equivalent is determined based on current population figures and an equivalent of population that is attributed to the industries that will also send wastewater to the new regional wastewater treatment plant). When extended to its full extent, the Ringsend WWTP will treat the equivalent of 2.1 million population equivalents.
- The Ringsend WwTP will reach its maximum treatment capacity of 2.1 million PE by 2020. To ensure that the Ringsend WwTP does not become overloaded post 2020 it will be necessary to divert part of its contributing catchment to another treatment facility. In order to achieve this, a new WWTP in north county Dublin will need to be commissioned by 2020.
- When it is initially commissioned the new WwTP will treat wastewater from approximately 350,000 population equivalents. By 2040, it is estimated that the treatment capacity provided by this new plant will have risen to 700,000 population equivalents.
- Although the proposed regional WwTP will treat some wastewater from other Local Authorities (Meath, Kildare, and eventually South Dublin), the majority of the wastewater that will be diverted to this new plant is currently discharging to Ringsend WWTP and a majority of the flows to the plant will come from the Fingal County Council area
- The new regional WwTP will require a site area of approximately 20 ha. Within this site, approximately 16 ha will be required for the plant and 4ha (approx 10 acres) for a buffer zone/screening.
- All of the nine land parcels identified are larger than the required 20 ha. The Project Team are currently undertaking further studies, which will continue over

the winter, to identify the most suitable 20 ha within each of the nine land parcels and ultimately a single preferred 20ha site.

- Why one regional plant and not a lot of small ones? The option of having a large number of smaller wastewater treatment plants rather than one regional plant was given a lot of consideration as far back as 2005, as part of the Greater Dublin Strategic Drainage Study (GSDSDS) . The issue was considered again in 2008 when the strategic Environment Assessment (SEA) report was published. Both the GSDSDS and the SEA reports confirm that one large regional plant will have a lesser impact on the environment than would a large number of smaller plants discharging to ground/surface waters across the Greater Dublin Area (GDA) and the decision was made to build one regional WwTP. The local rivers and streams across the GDA are too small to be able to absorb the cumulative impacts of treated effluent from a large number of smaller plants. The predicted impacts of climate change and the possibility of stricter surface/ground water legislation in the future, also rule out a number of small local plants and confirm the need for the one regional plant, capable of treating wastewater from 700,000 population equivalent.
- The cost of the project has not been determined to date. The full cost of the project will not be determined until the location of all three elements of the project are confirmed, along with the technology that will be used at the wastewater treatment works. The cost is likely to be in the hundreds of millions of euros and is likely to be less than €500 million.
- The €2.5billion figure that has been attributed to the Project, refers to all the wastewater projects in the Greater Dublin Area identified by the Greater Dublin Strategic Drainage Study (GSDSDS) in 2005. It includes for the upgrading of all wastewater treatment plants in the GDA to their ultimate capacity including the upgrading of the Ringsend WwTP and the Shanganagh Bray WwTP; it also includes for significant upgrading of the existing drainage networks across the entire GSDSDS study area and Operational & Maintenance costs for a 30 year period.
- The Public Consultation that was carried out by Fingal County Council in May and June this summer and now, during October and November, is non-statutory consultation and does not affect your rights to object to the project when the final preferred site is identified and a planning application is submitted to An Bord Pleanála. This will not happen before 2013, at which stage An Bord Pleanála will carry out its own statutory public consultation on the project. Fingal County Council are committed to consulting with all interested parties at the very earliest stage of the Greater Dublin Drainage Project and to give all parties the opportunity to have their say on the project before any decisions are made. There will be further opportunities for non-statutory public consultation in 2012, when the nine land parcels are reduced to a shortlist of potential sites.
- Fingal County Council has extended the date for receiving submissions on the Greater Dublin Drainage project until 2<sup>nd</sup> December to facilitate people who still



want to make a submission on the project. Although the advertised date for end of this non-statutory public consultation was 18<sup>th</sup> November (10<sup>th</sup> October – 18<sup>th</sup> November), submissions will be accepted and considered after the date, though they may not be included in the Consultation Report on this stage of the project.

- The preferred site for the proposed regional WwTP is unlikely to be known until late next year.
- People are welcome to contact the Project Team at any time by email at [info@greaterdublindrainage.ie](mailto:info@greaterdublindrainage.ie), by phone at 1890 44 55 67 or in writing to Greater Dublin Drainage Project Manager, C/O RPS Group, West Pier Business Campus, Dun Laoghaire, Co Dublin

**ALL ISSUES RAISED IN OVER 10,000 SUBMISSIONS TO THE GREATER DUBLIN DRAINAGE PROJECT WILL BE EXAMINED BY EXPERTS AND CONSIDERED BY THE PROJECT TEAM, BEFORE SITE SHORTLIST IS ANNOUNCED NEXT YEAR**

12<sup>th</sup> December 2011: The Greater Dublin Drainage Project Team has received over 10,000 submissions from members of the public and other stakeholders, since October 10<sup>th</sup>, when the identification of nine land parcels in north Dublin, within which the new regional wastewater treatment plant could potentially be located, marked the start of the second round of non statutory public consultation on the project.

Speaking to the Elected Members of Fingal County Council today, Peter O'Reilly, Project Engineer, said the Project Team welcome the significant interest in the project and he thanked people for making the Project Team aware of issues and constraints that need to be considered, before the Project Team make a decision on the most suitable location for the new waste infrastructure.

“The high level of engagement from local people and stakeholders this early in the project’s development is an endorsement of the early and detailed public consultation we have undertaken since the start of this project”, said Peter O Reilly. “All the issues contained in the submissions we have received will be examined by experts and considered by the Project Team”, he confirmed, “before a shortlist of potential sites is identified next year. Among the issues raised are : risk of odours, risks to agri- and horticulture, fishing and shellfish, ecology concerns, impact on local communities, traffic and access, over-burdening of communities, ecology, pollution, heritage, distance from load centres and cost.”

The majority of Fingal’s wastewater is currently treated at Ringsend WWTP. A new regional wastewater treatment works will be needed by 2020, to meet Dublin’s current and future economic, industrial and residential demands, as well as to protect the environment and meet the EU Water Framework Directive standards, avoiding huge financial fines and penalties.

The cost of the project will be known when locations for all three elements – the wastewater treatment works, the marine outfall and the orbital sewer - are identified. The estimated costs are likely to be less than €500million. Approximately 16 hectares of land will be required for the treatment works, with an additional 4 hectares of a buffer or screening zone. One large plant will have less impact on the environment than a number of smaller plants. Local rivers and streams are already at capacity and are too small to absorb treated water from a number of smaller plants.

“The new regional plant is needed as an add-on to the existing regional wastewater treatment works in Dublin at Ringsend, currently being extended to its maximum extent”, Peter O’Reilly said. “It will be two thirds smaller than Ringsend and capable of treating up to 700,000 Population Equivalent at full capacity by 2040, starting with treating 350,000 Population Equivalent in 2020. Most of the waste to be treated at the new regional plant will come from Fingal. “Population Equivalent” includes wastewater from industries, hospitals, offices etc as well as homes. “

.../

The Greater Dublin Drainage project includes a marine outfall and a new orbital drainage system, linking into the existing drainage system which brings wastewater from Final to Ringsend wastewater treatment works for treatment.

In the last five years the population of Fingal increased by 13.8%, almost double the national growth rate (from 239,992 to 273,051).

ENDS

For further information : Mary Murphy 087 233 6415 or Fingal Co Council Press  
Office: 01 890 5998

### THREE SITES NAMED AS EMERGING PREFERRED SITE OPTIONS FOR PROPOSED REGIONAL WASTEWATER PLANT IN NORTH DUBLIN. MARINE OUTFALLS TO NORTH AND SOUTH STILL BEING CONSIDERED

14<sup>th</sup> May 2012:

- **Annsbrook**, Approx 10km north of Dublin airport and approximately 2.7km west of Lusk with a marine outfall in the Northern Outfall Study Area, in the vicinity of Loughshinny
- **Newtowncorduff**, Approx 10km north of Dublin airport and approximately 1.0km west of Lusk, with a marine outfall in the Northern Outfall Study Area, in the vicinity of Loughshinny
- **Clonshagh/ Clonshaugh**, Approx 2.2km east of Dublin Airport, with a marine outfall in the Southern Outfall Area, to the north east of Ireland's Eye.

are the three emerging preferred site options for the proposed regional wastewater treatment plant in north Co Dublin, part of the Greater Dublin Drainage project. Each of the three preferred site options includes a site of approximately 20ha in area, associated orbital pipeline routes from the load centres to the wastewater treatment plant, pipeline routes from the wastewater treatment plant to the coast, marine pipeline routes and a marine outfall location. All three project options will now be considered further in detail before one emerging preferred project option is decided on and a planning application is made to An Bord Pleanála.

Fingal Co Council has published The *Alternative Sites Assessment and Route Selection Report (Phase 2): Emerging Preferred Sites and Routes and maps*. The Report and maps can be downloaded free of charge from [www.greaterdublindrainage.ie/project-reports/](http://www.greaterdublindrainage.ie/project-reports/). Digital copies of the Report can be obtained at a cost of €5. Printed copies will be available to view at Fingal Co Council headquarters and at local libraries. Printed copies will cost €150 to buy.

Starting today Fingal County Council will hold their third round of non-statutory public consultation for eight weeks, until 6th July, to give stakeholders and the general public another opportunity to meet with the Project Team and give their views and concerns on the project. The public consultation opportunities include four Open Days, to be held in Fingal County Council headquarters in Swords on

- Wednesday, 30<sup>th</sup> May from 2pm – 8pm
- Saturday, 2<sup>nd</sup> June from 11am – 4pm
- Thursday 14<sup>th</sup> June from 2pm - 8pm
- Saturday, 16<sup>th</sup> June from 11am – 4pm

The Project Team will be available at the Open Days to discuss the Report, answer questions and listen to views. People can also email [info@greaterdublindrainage.ie](mailto:info@greaterdublindrainage.ie) Lo Call 1890 44 55 67 or view [www.greaterdublindrainage.ie](http://www.greaterdublindrainage.ie)

According to Peter O'Reilly, Project Engineer, Fingal County Council, the preferred site on which planning permission will be sought, "needs to be a combination of the best location for the wastewater treatment plant, the new sewer and the marine outfall.

“We’re looking for the option that is best for the project, the one that will have the least impact on people and the environment. These three preferred sites all have merits. Therefore, in order to decide on the site that is most suitable for all three elements of the project, a lot more detailed technical studies will have to be carried out.”

“Since last December, after the eight weeks of the last non-statutory public consultation on the nine large land parcels identified by the Project Team, our technical experts have been engaged in a step-by-step qualitative process to identify the three emerging preferred site options”, Peter O’Reilly continued. “Using technical and environmental criteria, detailed surveys, consultations and workshops, they believe they have now identified the three sites on which the project will have the least impact and we will now consult with everybody on these sites. The feedback we get will be reviewed and considered by the Technical Team as they move towards selecting a preferred site, orbital pipeline route and marine outfall location”.

The Report published today sets out the process used to identify and appraise the site options relating to the three elements of the Greater Dublin Drainage project; the site for the regional wastewater treatment plant, the pipeline routes for the new orbital sewer and outfall locations to the Irish Sea.

“We want to hear what people think should be considered as part of the selection for the final preferred site route and marine outfall”, Peter O’Reilly concluded, “and to hear any information relevant to the development of this much needed project. The Technical Team has been working closely with a team of 13 environment protection specialists and the three emerging preferred sites balance all their views. Now we want to hear the views of the public again, before we go any further.”

This is the third in a series of non-statutory consultations held by Fingal County Council. An Bord Pleanála, the independent planning board will carry out its own statutory public consultation when a planning application is made for the wastewater treatment works, the orbital sewer and the marine outfall. All stakeholders will have another opportunity to give their views to An Bord Pleanála, at that stage.

The new regional wastewater treatment plant is needed in addition to the Ringsend plant, which is currently planned to be extended to its full capacity at which it will be able to treat wastewater from the equivalent of 2.1 million people. The regional plant in north Dublin will initially be approximately one sixth the size of the Ringsend plant. It will treat 350,000 population equivalent in 2020 when the plant opens and will be capable of treating up to 700,000 population equivalent, when it is at full capacity by 2040. (Population equivalent includes wastewater from industries, hospitals, schools, offices, businesses, etc as well as homes.)

ENDS

For further information: Mary Murphy: 087 233 6415

Fingal Co Council Press Office: 01 870 4453/ 087 990 8470Or 01 8905998/087 414 1580

## **APPENDIX C**

### **Update Brochure**

## Three Emerging Preferred Site Options Shortlisted for Further Consideration for Wastewater Treatment Plant

### What is happening now?

Fingal County Council has published a report, the *Alternative Sites Assessment and Route Selection Report (Phase 2): Emerging Preferred Sites and Routes*. This report identifies three emerging preferred site options for further consideration as the location for Greater Dublin Drainage.

The three emerging preferred site options for further consideration are:

**Annsbrook**

**Clonshagh**

**Newtowncorduff**

The *Alternative Sites Assessment and Route Selection Report (Phase 2): Emerging Preferred Sites and Routes* and associated mapping can be downloaded at [www.greaterdublindrainage.ie/project-reports/](http://www.greaterdublindrainage.ie/project-reports/). This report sets out the process used to identify and appraise the site options, i.e. the site for the WwTP, pipeline routes, and outfall locations. Each of the nine site options is discussed in detail.

As part of the report's publication, Fingal County Council has now launched an eight week non-statutory public consultation, which runs from 14th May until 6th July 2012; more details of how you can get involved are available inside.

The purpose of this information brochure is to



**Update you on the project's development**



**Invite you to participate in a new round of consultation on the three emerging preferred site options**



**Provide you with background information on the project**



## How were the three emerging preferred site options identified?

---

Since the close of the first ASA Consultation (10th October to 2nd December 2011), the Technical Team has been engaged in a step-by-step, qualitative process to identify the three emerging preferred site options. The environmental and technical criteria used in this process included:

- **Agronomy and Agriculture**
- **Air Quality and Odour**
- **Capital and Operational Costs**
- **Cultural Heritage**
- **Ecology**
- **Engineering and Design**
- **Hydrology and Hydrogeology**
- **Landscape and Visual**
- **Noise and Vibration**
- **People and Communities**
- **Planning Policy**
- **Safety**
- **Soils and Geology**
- **Sustainability**
- **Traffic**

The methodology involved an iterative (step-by-step) process from which sites with the least impact emerged. This process involved a combination of detailed surveys, consultations, and workshops to assess each site under the aforementioned criteria.

More detailed information on the methodology can be found in the FAQs and the Methodology Report at [www.greaterdublindrainage.ie/project-reports/](http://www.greaterdublindrainage.ie/project-reports/).

## What happens next?

---

To date, this is the third in a series of non-statutory consultations to take place. This is the final non-statutory consultation opportunity before the statutory consultation, run by An Bord Pleanála, takes place when the Project Team has made an application (Please see Project Road Map).

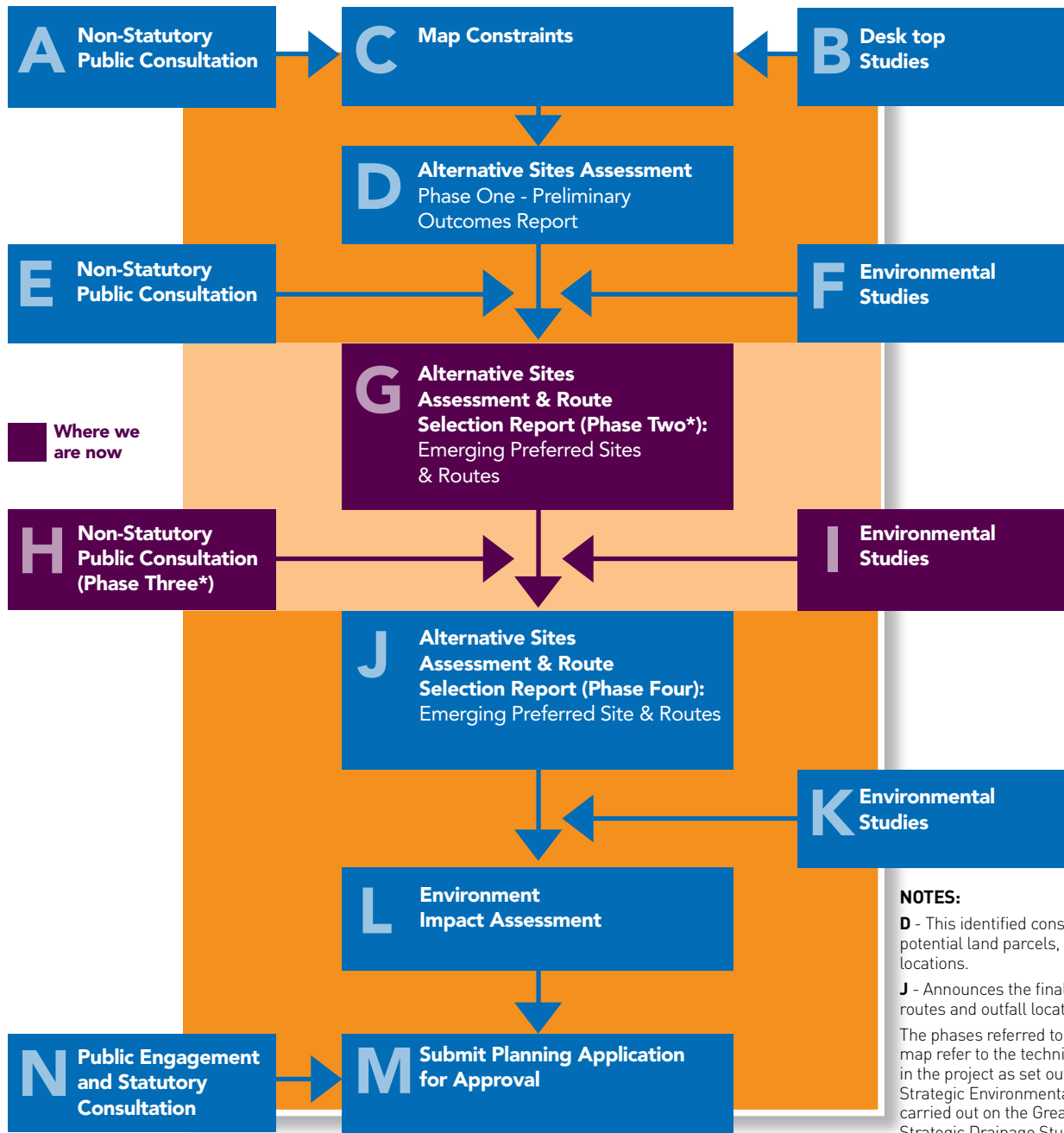
**All feedback received as part of this eight week non-statutory consultation, will be reviewed and collated into a Consultation Report, which will be published after the close of the consultation.**

The feedback will be reviewed and considered by the Technical Team as it moves towards the selection of a preferred site, orbital pipeline route, and marine outfall location for Greater Dublin Drainage.

A "site option" includes an approximately 20Ha site, associated orbital pipeline routes from the load centres to the wastewater treatment plant (WwTP), pipeline routes from the WwTP to the coast, marine pipeline routes, and a marine outfall location. A final preferred site option has not yet been chosen.



## Project Road Map



**NOTES:**  
**D** - This identified constraints, potential land parcels, pipeline locations.  
**J** - Announces the final site, pipeline routes and outfall location.  
 The phases referred to on the road map refer to the technical phases in the project as set out by the 2008. Strategic Environmental Assessment carried out on the Greater Dublin Strategic Drainage Study.  
 \*Phase 3 refers to Public Consultation (H)



## What is happening now: Public Consultation Opportunity on Three Emerging Preferred Site Options

---

### How can I get involved?

Fingal County Council is now undertaking an eight week non-statutory consultation and all interested parties are welcome to give their views on the three emerging preferred site options. **The consultation will run from Monday, 14th May to Friday, 6th July 2012.**

This non-statutory consultation will provide all interested people and groups with an opportunity to engage with the Project Team as part of the final site option selection process. All feedback and submissions will be reviewed as part of the development of Greater Dublin Drainage.

You are welcome to attend any of four Open Days to be held in Fingal County Council, Main Street, Swords. The Project Team will be available to discuss the report, answer your questions, and listen to your views.

### Open Days

- **Wednesday, 30th May, 2:00 p.m. to 8:00 p.m.**
- **Saturday, 2nd June, 11:00 a.m. to 4:00 p.m.**
- **Thursday, 14th June, 2:00 p.m. to 8:00 p.m.**
- **Saturday, 16th June, 11:00 a.m. to 4:00 p.m.**

In order to ensure stakeholder feedback is considered in advance of the project moving to the next phase, **all feedback for this consultation should be received by 5:00 p.m. on Friday, 6th July 2012.**

For further information or to make a submission, please:

**Email:** [info@greaterdublindrainage.ie](mailto:info@greaterdublindrainage.ie)

**Lo-call telephone:** 1890 44 55 67

**Write:** Greater Dublin Drainage Project Manager, c/o RPS Group, West Pier Business Campus, Dún Laoghaire, Co. Dublin, Ireland

**Visit:** [www.greaterdublindrainage.ie](http://www.greaterdublindrainage.ie)

## What is being consulted on?

Fingal County Council would like to hear your views on the following:

### Site Options

- What are your comments on the emerging preferred site options?

### Methodology

- Has all relevant criteria been considered when determining the three emerging preferred site options?
- Is there anything else you think should be reviewed and considered?

### Final Site Selection

- What do you think should be considered as part of the selection for the final preferred site route and outfall?

### Any other comments?

- How would you like to be communicated with as the project progresses?
- If you have any other information you believe is relevant to the development of the project please let us know.



## Project Background and Information

---

### What is Greater Dublin Drainage?

Greater Dublin Drainage, which includes a new regional treatment plant with associated marine outfall and orbital sewer, is required to provide the Greater Dublin Area (GDA) with the strategic wastewater infrastructure required to continue to develop, both socially and economically.

The project involves developing a new:

- **regional wastewater treatment works;**
- **marine outfall; and**
- **drainage network.**

### Why is it needed?

Greater Dublin Drainage is needed to provide sustainable drainage and wastewater treatment for the GDA to meet current and future economic, industrial, and residential needs. It will help protect the environment and will enable Ireland to meet the EU Water Framework Directive standards.

### What has happened so far?

Fingal County Council has been engaged in the planning of a new regional wastewater treatment works, an associated marine outfall, and an orbital sewer to be located in North County Dublin since April 2011.

In May 2011, the first public consultation (Constraints Consultation) was launched and this consultation invited members of the public to comment on the proposed study area and provide information on constraints that should be considered as the project develops.

All feedback was considered by the Technical Team and in October 2011 the *Alternative Sites Assessment (Phase 1): Preliminary Screening Outcomes Report* was published. This report identified nine potential land parcels for further consideration. The nine short-listed land parcels included Annsbrook, Baldurgan, Cloghran, Clonshagh, Cookstown, Newtowncorduff, Rathartan, Saucerstown, and Tyrrelstown Little.

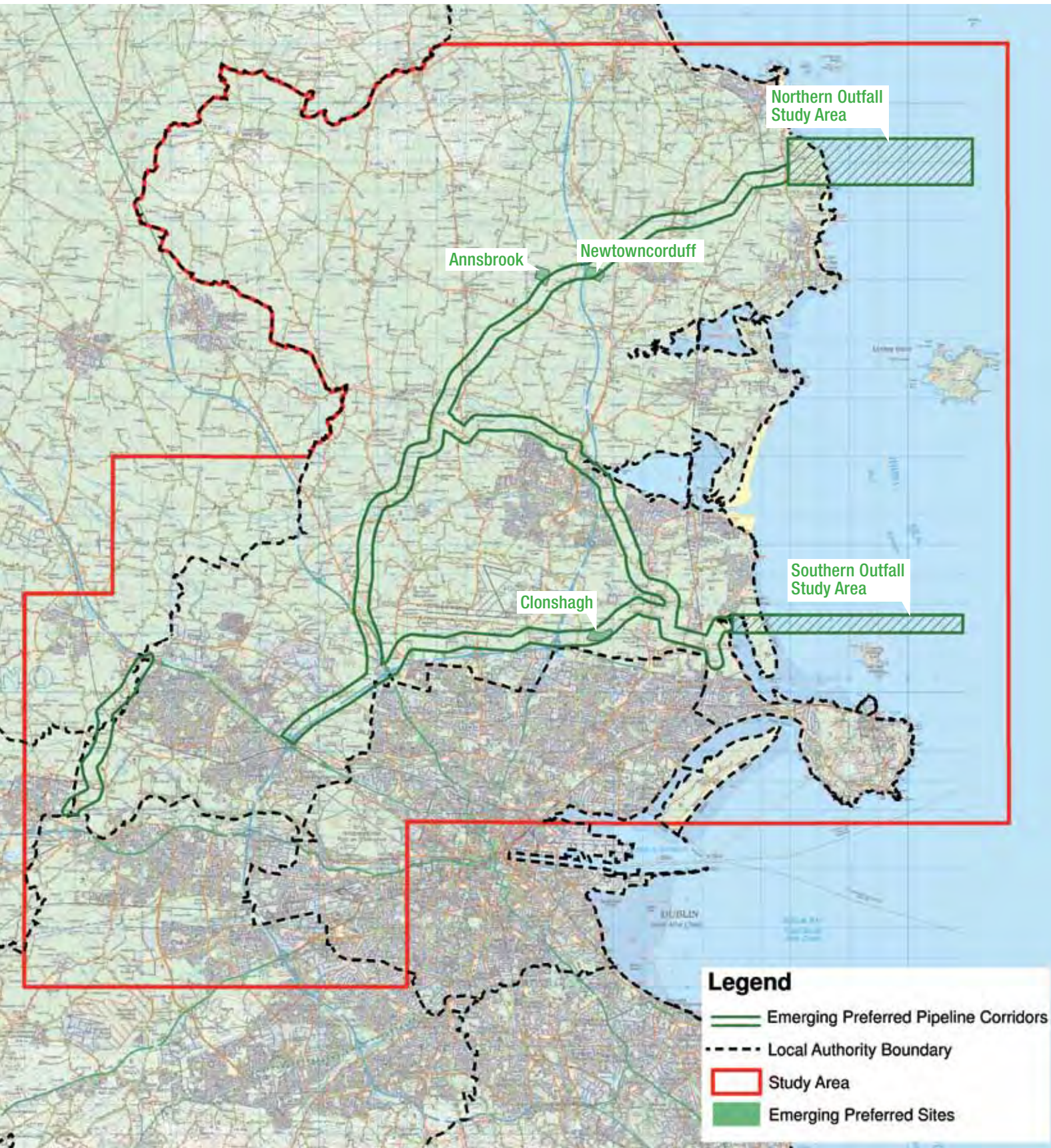
An eight-week public consultation on the Alternative Sites Assessment (ASA) commenced in October 2011 and stakeholders were asked to provide feedback on the short-listed land parcels and any issues that should be considered when determining the emerging preferred sites and associated outfalls.

The Technical Team reviewed and considered all feedback from the ASA Phase 1 consultation and has now identified the three emerging preferred site options for consultation with members of the public and other interested stakeholders.

### Who is leading the project?

The Greater Dublin Drainage Project is being led by Fingal County Council, on behalf of Dublin City Council and the County Councils of Dún Laoghaire-Rathdown, South Dublin, Kildare, and Meath.

## Map of the Three Emerging Preferred Site Options



## Trí Rogha Nua Suímh is Dealraithí a Roghnófar le bheith ar an nGearrliosta Breithnithe Breise don Ionad Cóireála Fuíolluisce

### Céard atá ar siúl anois?

Tá tuairisc foilsithe ag Comhairle Contae Fhine Gall, *The Alternative Sites Assessment and Route Selection Report (Step 2): Emerging Preferred Sites and Routes*. Sonraíonn an tuairisc seo trí rogha suímh is dealraithí a roghnófar le tuilleadh breithnithe a dhéanamh orthu chun bheith ceaptha mar shuíomh do Dhraenáil Mhórcheantar Bhaile Átha Cliath

Na trí rogha is dealraithí a roghnófar le tuilleadh breithnithe a dhéanamh orthu ná:

#### Sruthán Anna

#### Cluain Seach

#### An Baile Nua

Is féidir an Tuairisc *The Alternative Sites Assessment and Route Selection (Step 2): Emerging Preferred Sites and Routes* agus na léarscáileanna bainteach leis a íoslódáil ó [www.greaterdublindrainage.ie/project-reports/](http://www.greaterdublindrainage.ie/project-reports/) Leagann an tuairisc seo amach an próiseas a úsáidtear chun na roghanna suímh a aithint agus a mheas, i.e. an suíomh don ICFU, bealaí don phíblíne agus suíomhanna don phíobán sceite. Déantar plé mionsonrach ar gach ceann de na naoi shuíomh fhéideartha.

Mar pháirt d'fhoilsiú na tuairisce, tá próiseas comhairliúcháin neamhrechtúil ocht seachtaine seolta ag Comhairle Contae Fhine Gall, a bheidh ar siúl ó 14 Bealtaine go 6 Iúil 2012; tá tuilleadh sonraí faoi conas bheith páirteach ann ar fáil istigh.

Aidhm an bhróisiúir faisnéise seo ná:



**Nuashonraí a thabhairt duit maidir le Forbairt an tionscadail**



**An deis a thabhairt duit bheith páirteach i mbabhta nua comhairliúcháin ar na trí shuíomh nua is dealraithí a roghnófar**



**Faisnéis chúlra maidir leis an tionscadal a chur ar fáil duit**

## Conas a aithníodh na trí rogha suíomh is dealraithí a roghnófar?

Ó dheireadh an Chéad Phróisis Comhairliúchán ASA (10 Deireadh Fómhair do 2 Nollaig 2011) i leith, tá an Fhoireann Theicniúil tar éis bheith ag obair ar phróiseas céim ar chéim, cáilíochtúil chun na trí rogha suíomh is dealraithí a roghnófar a aithint. I measc na gcritéar timpeallachta agus teicniúil a úsáidtear sa phróiseas seo, tá:

- Agranamaíocht agus Talmhaíocht
- Cáilíocht agus Boladh Aeir
- Costais Chaipitil agus Oibríochta
- Oidhreacht Chultúrtha
- Éiceolaíocht
- Innealtóireacht agus Dearadh
- Hidreolaíocht agus Hidrigeoalíocht
- Tírdhreach agus Cuma
- Fuaim agus Creathadh
- Daoine agus Pobail
- Polasaí Pleanála
- Slándáil
- Ithreacha agus Geolaíocht
- Inbhuanaithe
- Trácht

Úsáideadh próiseas atrialach (céim ar chéim) sa mhodheolaíocht agus roghnaíodh na suíomhanna is lú iarmharta dá réir. Bhí meascán de shuirbhéanna sonracha, comhairliúcháin agus ceardlanna sa phróiseas chun gach suíomh a mheas faoi na critéir a luadh roimhe seo.

Is féidir teacht ar fhaisnéis níos sonraí ar an mhodheolaíocht sna ceisteanna coitianta agus sa Tuairisc Mhodheolaíochta ar [www.greaterdublindrainage.ie/project-reports/](http://www.greaterdublindrainage.ie/project-reports/).

## Céard a tharlóidh i ndiaidh seo?

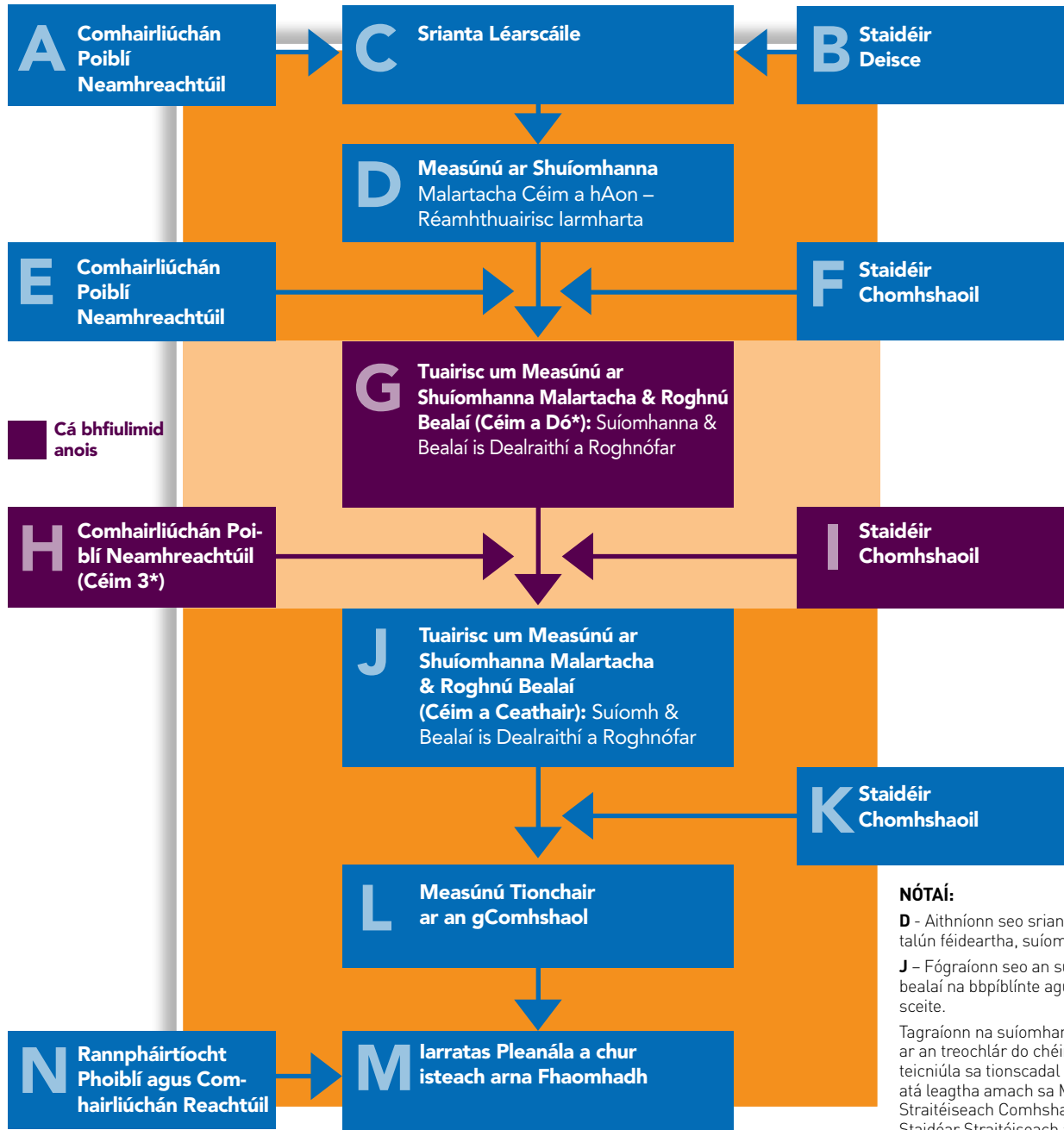
Seo é an tríú sraith comhairliúchán neamhreachtúil le bheith curtha ar bun. Seo í an deis chomhairliúcháin neamhreachtúil dheireanach a bheidh ann roimh an gcomhairliúchán reachtúil, reáchtáilte ag an mBord Pleanála, nuair a bheidh iarratas curtha isteach ag an bhFoireann Tionscadail (Féach an Treochlár).

**Déanfar gach aiseolas faighte mar pháirt den phróiseas comhairliúcháin ocht seachtaine seo a athbhreithniú agus a shaincagadh i dTuarascáil Chomhairliúcháin, a fhoilseofar i ndiaidh an phróisis comhairliúcháin.**

Déanfaidh an Fhoireann Theicniúil athbhreithniú ar an aiseolas agus é a mheas faoi mar a théann sí i dtreo suíomh roghnaithe, bealach do píblíne fhithiseach, agus suíomh sceite muirí a roghnú do Dhraenáil Mhórcheantar Bhaile Átha Cliath.

Is ionann “rogha suímh” agus suíomh thart ar 20Ha, bealaí píblíne fithiseacha ó na láir lódála chuig an Ionad Cóireála Fuíolluisce (ICFU), bealaí píblíne ón ICFU chuig an gcósta, bealaí píblíne muirí, agus suíomh sceite muirí. Níl an suíomh roghnaithe deiridh roghnaithe go fóill.

## Treochlár an Tionscadail



**NÓTAÍ:**

**D** - Aithníonn seo sriantha, dáileachtaí talún féideartha, suíomhanna píblíne.

**J** - Fógraíonn seo an suíomh deiridh, bealaí na bPíblínte agus an suíomh sceite.

Tagraíonn na suíomhanna a luaitear ar an treochlár do chéimeanna teicniúla sa tionscadal faoi mar atá leagtha amach sa Mheasúnú Straitéiseach Comhshaoil ar an Staidéar Straitéiseach ar Dhraenáil Mhórchearantar Bhaile Átha Cliath.

\*Tagraíonn céim 3 do Chomhairliúchán Poiblí (H)



## Céard atá ar siúl anois: Deis don Comhairliúchán Poiblí Maidir leis na Trí Rogha Do Shuíomhanna is Dealraithí a Roghnófar

### Conas is féidir liom bheith páirteach?

Tá Comhairle Contae Fhine Gall ag obair anois ar phróiseas comhairliúcháin ocht seachtaine agus tá fáilte roimh gach páirtí ar spéis leo a gcuid dearchtaí a thabhairt faoi na trí shuíomh is dealraithí a roghnófar.

**Beidh an comhairliúchán ar siúl ó Luan, 14 Bealtaine go 6 Meitheamh 2012.**

Cuirfidh an comhairliúchán neamhrechtúil an deis ar fáil do gach duine agus grúpa ar spéis leo plé leis an bhFoireann Tionscadail maidir leis an bpróiseas roghnúcháin don suíomh deiridh. Déanfar athbhreithniú ar gach aiseolas agus aighneacht mar pháirt d'fhorbairt Dhraenáil Mhórcheantar Bhaile Átha Cliath.

Tá fáilte romhat freastal ar cheithre Lá Oscailte a bheidh ar siúl i gComhairle Contae Fhine Gall, an tSráid Mhór, Sord. Beidh an Fhoireann Tionscadail ar fáil chun an tuairisc a phlé, do chuid ceisteanna a fhreagairt, agus éisteacht le do chuid tuairimí.

### Laethanta Oscailte

- Céadaoin, 30 Bealtaine, 2:00p.m. go 8:00p.m.
- Satharn, 2 Meitheamh, 11:00a.m. go 4:00p.m.
- Déardaoin, 14 Meitheamh, 2:00p.m. go 8:00p.m.
- Satharn, 16th Meitheamh, 11:00a.m. go 4:00p.m.

Chun cinnte a dhéanamh de go gcorfar aiseolas na bpáirtithe leasmhara sula mbogann an tionscadal chun cinn chuig an gcéad chéim eile, ní mór go bhfaighfí gach aiseolas don chomhairliúchán seo roimh 5:00p.m. ar Aoine an 6ú lá d'Iúil 2012.

Chun tuilleadh eolais a fháil nó aighneacht a chur isteach:

**Rphost:** [info@greaterdublindrainage.ie](mailto:info@greaterdublindrainage.ie)

**Teileafón íosghlao:** 1890 44 55 67

**Scríobh chuig:** Bainisteoir Tionscadail Dhraenáil Bhaile Átha Cliath, f/ch RPS Group, Campas Ghnó na Cé Thiar, Dún Laoghaire, Co. Átha Cliath, Éire

**Téigh chuig:** [www.greaterdublindrainage.ie](http://www.greaterdublindrainage.ie)

## Céard faoi a ndéanfar an comhairliúchán?

**Ba mhaith le Comhairle Contae Fhine Gall do chuid dearchtaí a chloisteáil maidir leo seo a leanas:**

### Roghanna Suímh

- Céard é do bharúil maidir leis na roghanna suímh is dealraithí a roghnófar?

### Modheolaíocht

- An bhfuil na critéir ábhartha go léir tar éis bheith curtha san áireamh in aimsiú na dtrí rogha suíomh is dealraithí a roghnófar?
- An bhfuil aon rud eile a cheapann tú ar chóir athbhreithniú nó machnamh a dhéanamh air?

### Roghnú Deiridh Suímh

- Céard a cheapann tú ar chóir machnamh a dhéanamh air mar pháirt de roghnú an tsuímh, bhealaigh agus phíobáin sceite deiridh?

### Aon nóta tráchtta eile?

- Conas mar is fearr leat go ndéanfaí cumarsáid leat faoi mar a théann an tionscadal chun cinn?
- Má tá aon eolas eile agat a cheapann tú a bheadh ábhartha d'fhorbairt an tionscadail, déan teagmháil linn agus fáilte.





## Cúlra an Tionscadail agus Eolas faoi

### Céard is Draenáil Mhórchéantar Bhaile Átha Cliath ann?

Tá gá le Draenáil Mhórchéantar Bhaile Átha Cliath, a chuimsíonn ionad cóireála réigiúnach nua le láthair sceite muirí agus séarach fithiseach gaolmhar, chun bonneagar fuíolluisce straitéiseach a sholáthar do Mhórchéantar Bhaile Átha Cliath (MBÁC) atá riachtanach le forbairt a dhéanamh, go sóisialta agus go heacnamaíoch araon

I gceist sa tionscadal beidh forbairt:

- oibreacha cóireála fuíolluisce nua;
- láithreach sceite muirí; agus
- líonra draenála.

### Cén fáth a bhfuil gá leis?

Tá gá le Draenáil Mhórchéantar Bhaile Átha Cliath chun draenáil agus cóireáil fuíolluisce inbhuanaithe a chur ar fáil do MBÁC chun freastal ar a gcuid riachtanas eacnamaíoch, tionsclaíoch agus cónaitheach amach anseo. Beidh sé ina chabhair i gcosaint an chomhshaoil agus cuirfidh sé ar chumas na hÉireann Creatchaighdeáin Treorach Uisce an AE a chomhlíonadh.

### Céard atá tarlaithe go dtí seo?

Tá Comhairle Contae Fhine Gall tar éis bheith i mbun pleanála ar oibreacha cóireála fuíolluisce nua, láthair sceite muirí gaolmhar, agus séarach fithiseach atá le bheith suite i dTuaisceart Bhaile Átha Cliath ó mhí Aibreáin 2011.

I mí Bealtaine 2011, seoladh an chéad chomhairliúchán pobail (Comhairliúchán maille le Srianta) agus tugadh cuireadh sa chomhairliúchán seo do dhaoine ón bpobal an limistéar staidéir molta a phlé agus eolas a thabhairt

maidir le srianta ar chóir iad a chur san áireamh de réir mar a bheadh an tionscadal ag dul ar aghaidh.

Chíor an Fhoireann Theicniúil gach aiseolas a fuarthas agus i mí Dheireadh Fómhair 2011 foilsíodh *The Alternative Sites Assessment (Step 1): Preliminary Screening Outcomes*. D'aithin an tuarascáil seo naoi ndáileacht talún le breithniú breise a dhéanamh orthu. Seo a leanas na naoi ndáileacht talún a bhí ar an ngearrliosta; Sruthán Anna, Baile Deargáin, Clochrán, Cluain Seach, Baile an Chócaigh, An Baile Nua, Ráth Thoirtín, Baile an tSásaraigh agus Baile an Trialaigh Beag.

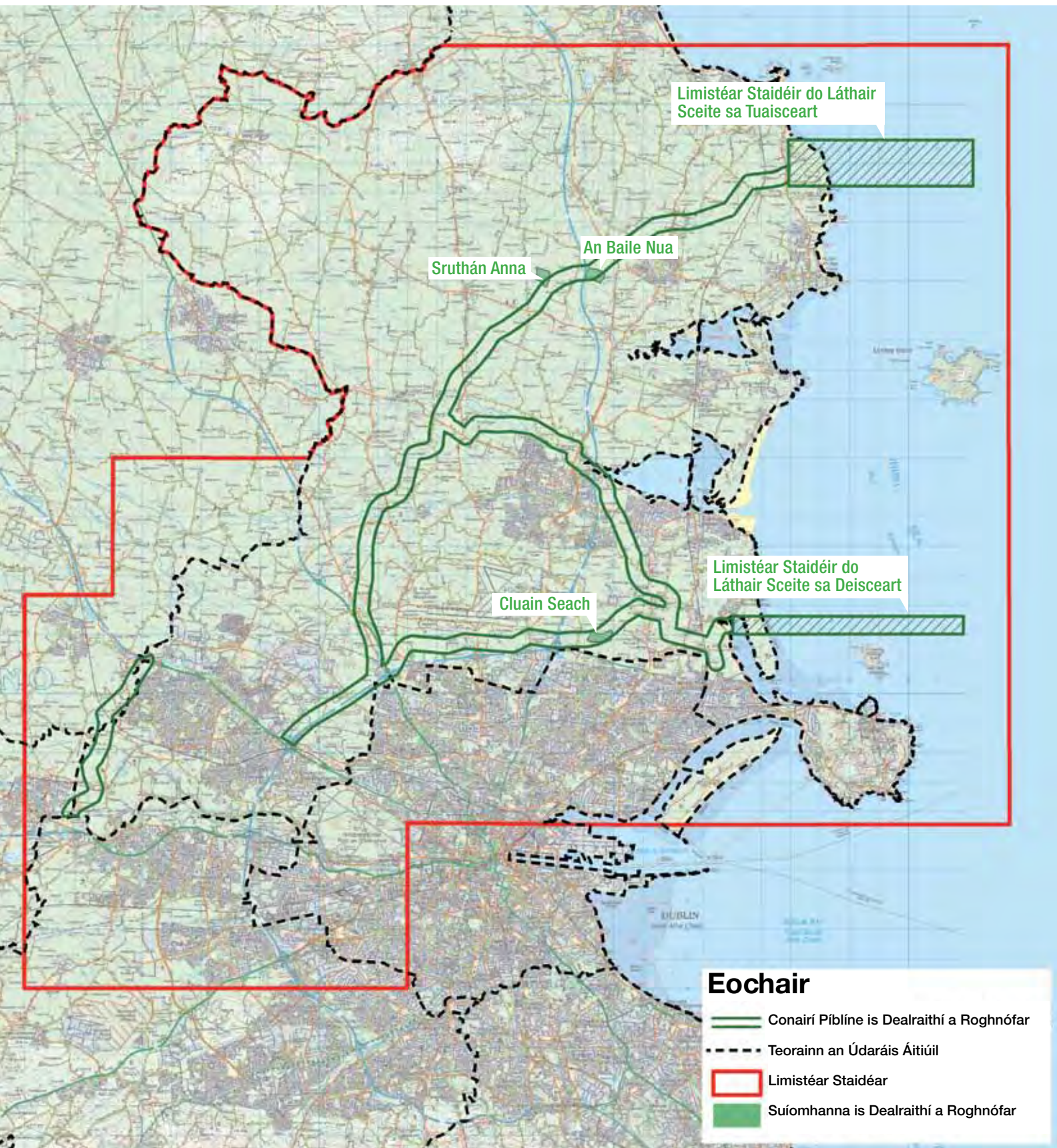
Thosaigh comhairliúchán ocht seachtaine maidir le Measúnú ar Shuíomhanna Malartacha (MSM) i mí Dheireadh Fómhair 2011 agus iarradh ar pháirtithe leasmhara aiseolas a sholáthar faoi na dáileachtaí talún agus faoi aon mhórchéist ar chóir í a chur san áireamh le linn roghnú na suíomhanna agus láithreacha sceite gaolmhara.

Rinne an Fhoireann Theicniúil athbhreithniú agus cíoradh ar gach píosa aiseolais ó gcomhairliúchán MSM i gcéim 1 agus tá trí shuíomh aitheanta aige is dealraíthí a roghnófar le cur faoi bhráid an phobail agus faoi bhráid gach páirtithe leasmhara eile.

### Cé atá i gceannas an tionscadail?

Is é Comhairle Contae Fhine Gall atá i gceannas Thionscadal Draenála Mhórchéantar Bhaile Átha Cliath, thar ceann Chomhairle Cathrach Bhaile Átha Cliath agus Chomhairlí Contae Dhún Laoghaire- Ráth an Dúin, Dheisceart Bhaile Átha Cliath, Chill Dara agus Chomhairle Contae na Mí.

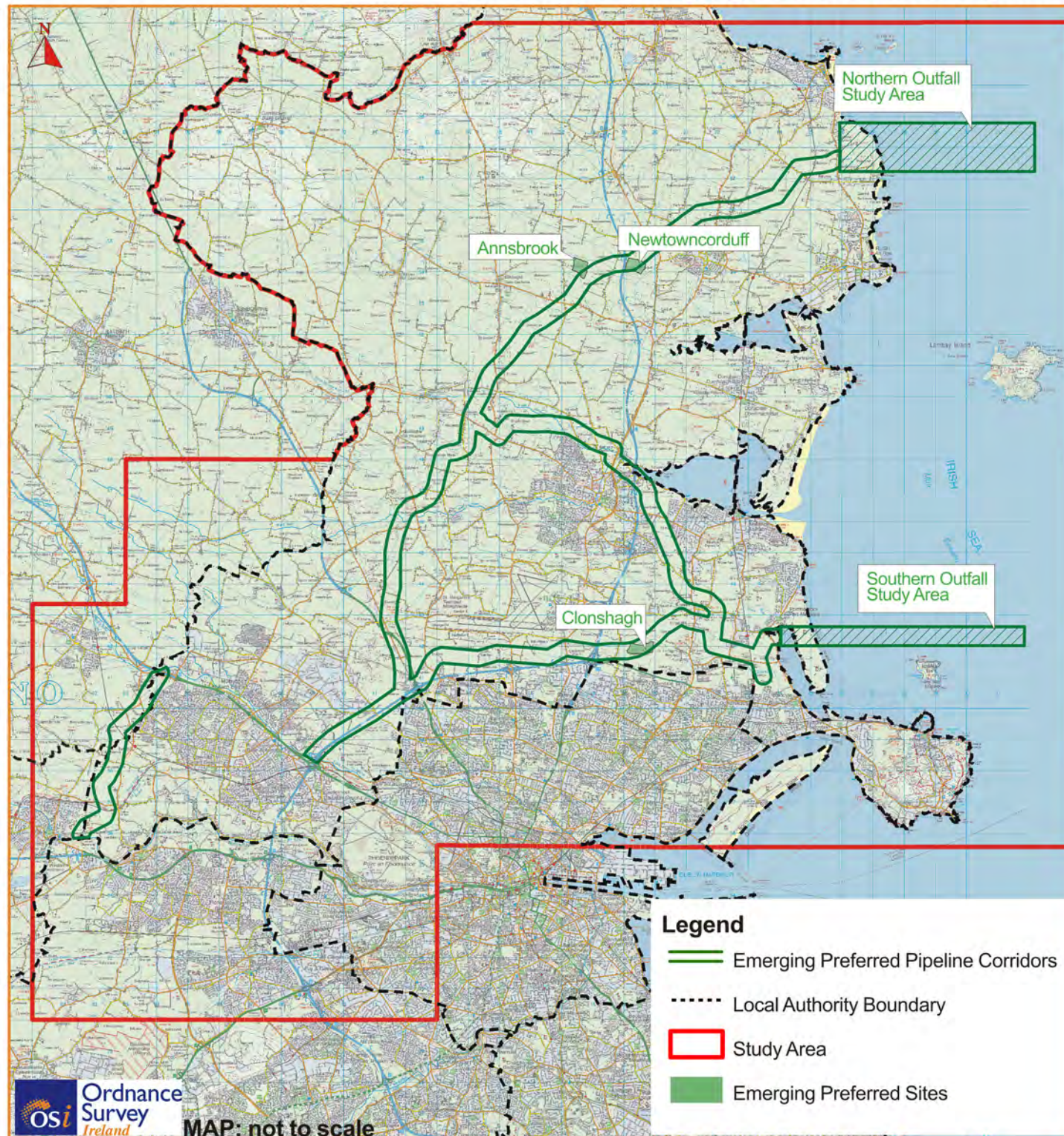
## Léarscáil de na Trí Shuíomh is Dealraithí a Roghnófar



## **APPENDIX D**

### **Posters**

Map of the Three Emerging Preferred Site Options



## ALTERNATIVE SITES ASSESSMENT & ROUTE SELECTION (Phase 2): EMERGING PREFERRED SITES & ROUTES PRELIMINARY SCREENING OUTCOMES REPORT

Fingal County Council has published a report identifying three emerging preferred site options for further consideration as the location for Greater Dublin Drainage. A “site option” includes an approximately 20Ha site, associated orbital pipeline routes from the load centres to the wastewater treatment plant (WwTP), pipeline routes from the WwTP to the coast, marine pipeline routes, and a marine outfall location. *A final preferred site option has not yet been chosen.*

**The three preferred site options are:**

- Annsbrook (20.0ha)**
- Clonshagh (23.1ha)**
- Newtowncorduff (22.8ha)**

The full report and associated mapping can be downloaded at : [www.greaterdublindrainage.ie](http://www.greaterdublindrainage.ie)

Fingal County Council has now launched an eight week non-statutory consultation and all interested parties are welcome to give their views on the three emerging preferred site options and their associated outfall locations.

**The consultation will run from Monday 14<sup>th</sup> May to Friday 6<sup>th</sup> July 2012.**

You are welcome to attend any of four Open Days to be held in Fingal County Council, Main Street, Swords. The Project Team will be available to discuss the report, answer your questions, and listen to your views.

**OPEN DAYS**

- Wednesday, 30<sup>th</sup> May, 2:00 p.m. to 8:00 p.m.
- Saturday, 2<sup>nd</sup> June, 11:00 a.m. to 4:00 p.m.
- Thursday, 14<sup>th</sup> June, 2:00 p.m. to 8:00 p.m.
- Saturday, 16<sup>th</sup> June, 11:00 a.m. to 4:00 p.m.

In order to ensure stakeholder feedback is considered in advance of the project moving to the next phase, all feedback for this consultation should be received by:

**5:00 p.m. on Friday, 6<sup>th</sup> July 2012.**

For further information or to make a submission, please:

**Email:** [info@greaterdublindrainage.ie](mailto:info@greaterdublindrainage.ie)

**Phone:** Lo-call 1890.44.55.67

**Write:** Greater Dublin Drainage Project Manager, c/o RPS Group, West Pier Business Campus, Dún Laoghaire, Co. Dublin, Ireland

## **APPENDIX E**

### **Displays**

# update

14<sup>th</sup> May- 6<sup>th</sup> July 2012



## Three Emerging Preferred Site Options Shortlisted for Further Consideration for Wastewater Treatment Plant

### What is happening now?

Fingal County Council has published a report, the *Alternative Sites Assessment and Route Selection Report (Phase 2): Emerging Preferred Sites and Routes*. This report identifies three emerging preferred site options for further consideration as the location for Greater Dublin Drainage.

The three emerging preferred site options for further consideration are:

**Annsbrook**

**Clonshagh**

**Newtowncorduff**

The *Alternative Sites Assessment and Route Selection Report (Phase 2): Emerging Preferred Sites and Routes* and associated mapping can be downloaded at [www.greaterdublindrainage.ie/project-reports/](http://www.greaterdublindrainage.ie/project-reports/). This report sets out the process used to identify and appraise the site options, i.e. the site for the WwTP, pipeline routes, and outfall locations. Each of the nine site options is discussed in detail.

As part of the report's publication, Fingal County Council has now launched an eight week non-statutory public consultation, which runs from 14th May until 6th July 2012; more details of how you can get involved are available inside.

The purpose of this information brochure is to

- ▶ Update you on the project's development
- ▶ Invite you to participate in a new round of consultation on the three emerging preferred site options
- ▶ Provide you with background information on the project



## How were the three emerging preferred site options identified?

Since the close of the first ASA Consultation (10th October to 2nd December 2011), the Technical Team has been engaged in a step-by-step, qualitative process to identify the three emerging preferred site options. The environmental and technical criteria used in this process included:

- **Agronomy and Agriculture**
- **Air Quality and Odour**
- **Capital and Operational Costs**
- **Cultural Heritage**
- **Ecology**
- **Engineering and Design**
- **Hydrology and Hydrogeology**
- **Landscape and Visual**
- **Noise and Vibration**
- **People and Communities**
- **Planning Policy**
- **Safety**
- **Soils and Geology**
- **Sustainability**
- **Traffic**

The methodology involved an iterative (step-by-step) process from which sites with the least impact emerged. This process involved a combination of detailed surveys, consultations, and workshops to assess each site under the aforementioned criteria.

More detailed information on the methodology can be found in the FAQs and the Methodology Report at [www.greaterdublindrainage.ie/project-reports/](http://www.greaterdublindrainage.ie/project-reports/).

## What happens next?

To date, this is the third in a series of non-statutory consultations to take place. This is the final non-statutory consultation opportunity before the statutory consultation, run by An Bord Pleanála, takes place when the Project Team has made an application (Please see Project Road Map).

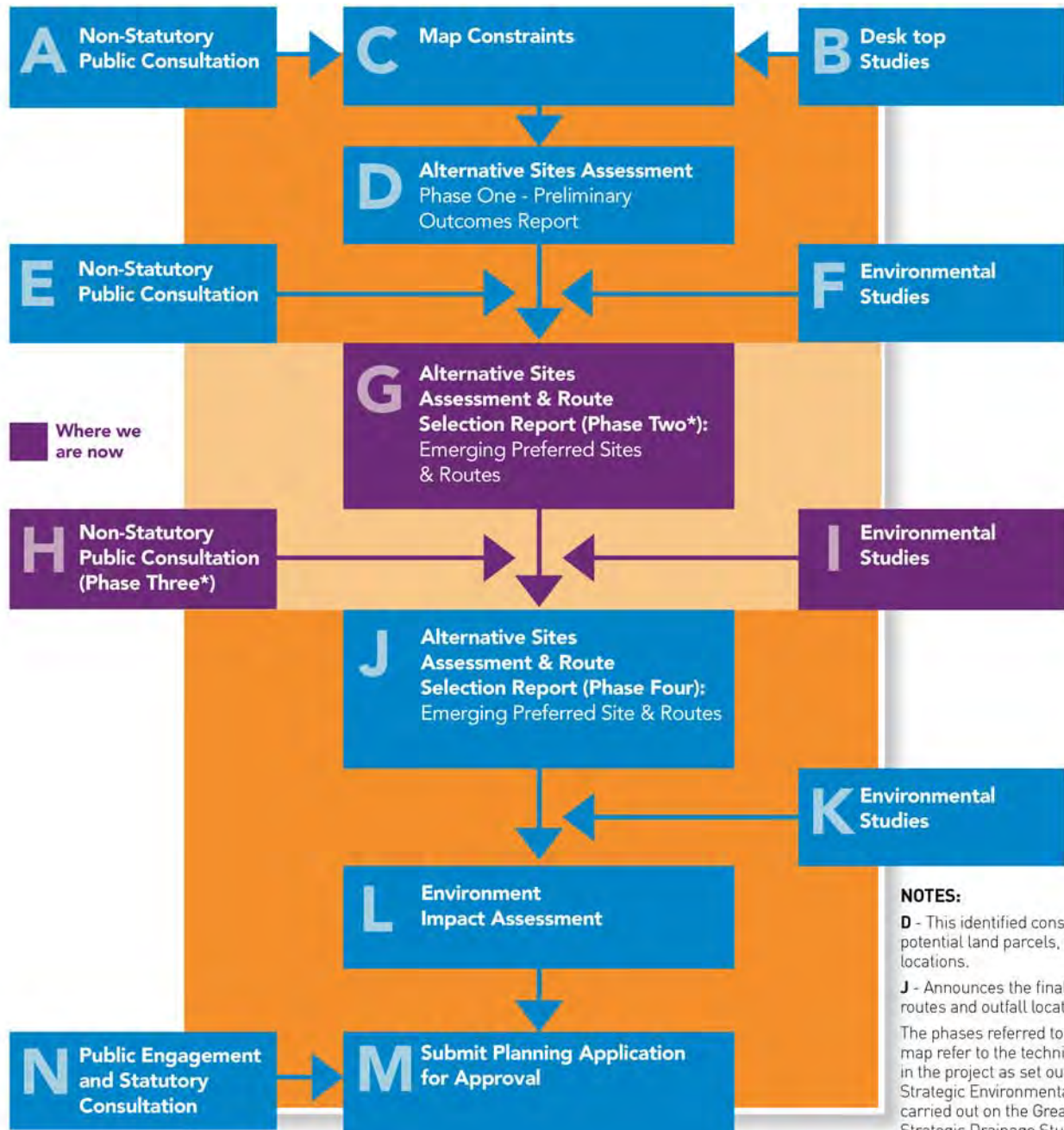
**All feedback received as part of this eight week non-statutory consultation, will be reviewed and collated into a Consultation Report, which will be published after the close of the consultation.**

The feedback will be reviewed and considered by the Technical Team as it moves towards the selection of a preferred site, orbital pipeline route, and marine outfall location for Greater Dublin Drainage.

A "site option" includes an approximately 20Ha site, associated orbital pipeline routes from the load centres to the wastewater treatment plant (WwTP), pipeline routes from the WwTP to the coast, marine pipeline routes, and a marine outfall location. A final preferred site option has not yet been chosen.



## Project Road Map



Where we are now

**NOTES:**

**D** - This identified constraints, potential land parcels, pipeline locations.

**J** - Announces the final site, pipeline routes and outfall location.

The phases referred to on the road map refer to the technical phases in the project as set out by the 2008. Strategic Environmental Assessment carried out on the Greater Dublin Strategic Drainage Study.

\*Phase 3 refers to Public Consultation (H)





## What is happening now: Public Consultation Opportunity on Three Emerging Preferred Site Options

### How can I get involved?

Fingal County Council is now undertaking an eight week non-statutory consultation and all interested parties are welcome to give their views on the three emerging preferred site options. **The consultation will run from Monday, 14th May to Friday, 6th July 2012.**

This non-statutory consultation will provide all interested people and groups with an opportunity to engage with the Project Team as part of the final site option selection process. All feedback and submissions will be reviewed as part of the development of Greater Dublin Drainage.

You are welcome to attend any of four Open Days to be held in Fingal County Council, Main Street, Swords. The Project Team will be available to discuss the report, answer your questions, and listen to your views.

### Open Days

- **Wednesday, 30th May, 2:00 p.m. to 8:00 p.m.**
- **Saturday, 2nd June, 11:00 a.m. to 4:00 p.m.**
- **Thursday, 14th June, 2:00 p.m. to 8:00 p.m.**
- **Saturday, 16th June, 11:00 a.m. to 4:00 p.m.**

In order to ensure stakeholder feedback is considered in advance of the project moving to the next phase, **all feedback for this consultation should be received by 5:00 p.m. on Friday, 6th July 2012.**

For further information or to make a submission, please:

**Email:** [info@greaterdublindrainage.ie](mailto:info@greaterdublindrainage.ie)

**Lo-call telephone:** 1890 44 55 67

**Write:** Greater Dublin Drainage Project Manager, c/o RPS Group, West Pier Business Campus, Dún Laoghaire, Co. Dublin, Ireland

**Visit:** [www.greaterdublindrainage.ie](http://www.greaterdublindrainage.ie)

## What is being consulted on?

Fingal County Council would like to hear your views on the following:

### Site Options

- What are your comments on the emerging preferred site options?

### Methodology

- Has all relevant criteria been considered when determining the three emerging preferred site options?
- Is there anything else you think should be reviewed and considered?

### Final Site Selection

- What do you think should be considered as part of the selection for the final preferred site route and outfall?

### Any other comments?

- How would you like to be communicated with as the project progresses?
- If you have any other information you believe is relevant to the development of the project please let us know.



## Project Background and Information

### What is Greater Dublin Drainage?

Greater Dublin Drainage, which includes a new regional treatment plant with associated marine outfall and orbital sewer, is required to provide the Greater Dublin Area (GDA) with the strategic wastewater infrastructure required to continue to develop, both socially and economically.

The project involves developing a new:

- regional wastewater treatment works;
- marine outfall; and
- drainage network.

### Why is it needed?

Greater Dublin Drainage is needed to provide sustainable drainage and wastewater treatment for the GDA to meet current and future economic, industrial, and residential needs. It will help protect the environment and will enable Ireland to meet the EU Water Framework Directive standards.

### What has happened so far?

Fingal County Council has been engaged in the planning of a new regional wastewater treatment works, an associated marine outfall, and an orbital sewer to be located in North County Dublin since April 2011.

In May 2011, the first public consultation (Constraints Consultation) was launched and this consultation invited members of the public to comment on the proposed study area and provide information on constraints that should be considered as the project develops.

All feedback was considered by the Technical Team and in October 2011 the *Alternative Sites Assessment (Phase 1): Preliminary Screening Outcomes Report* was published. This report identified nine potential land parcels for further consideration. The nine short-listed land parcels included Annsbrook, Baldurgan, Cloghran, Clonshagh, Cookstown, Newtowncorduff, Rathartan, Saucerstown, and Tyrrelstown Little.

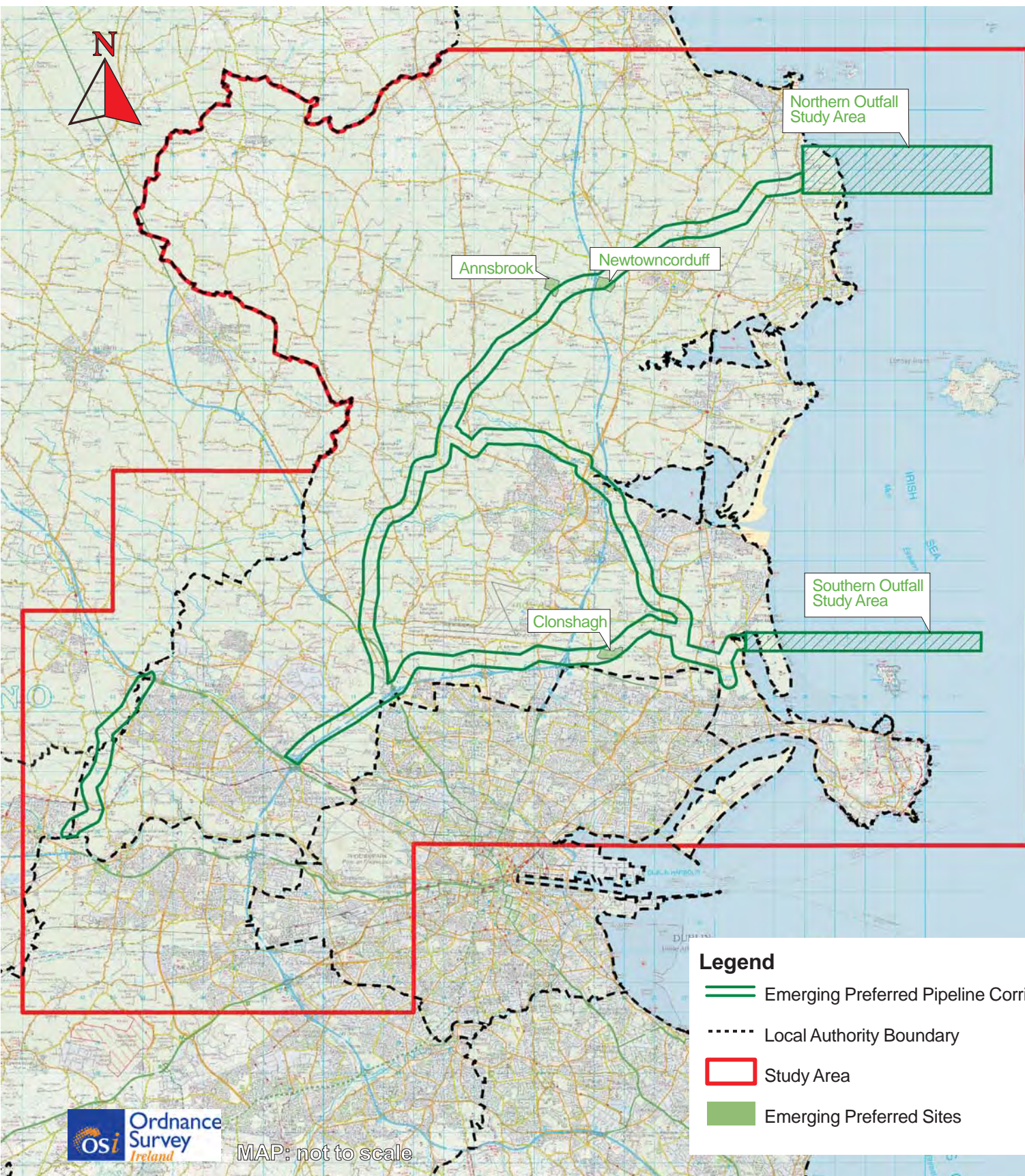
An eight-week public consultation on the Alternative Sites Assessment (ASA) commenced in October 2011 and stakeholders were asked to provide feedback on the short-listed land parcels and any issues that should be considered when determining the emerging preferred sites and associated outfalls.

The Technical Team reviewed and considered all feedback from the ASA Phase 1 consultation and has now identified the three emerging preferred site options for consultation with members of the public and other interested stakeholders.

### Who is leading the project?

The Greater Dublin Drainage Project is being led by Fingal County Council, on behalf of Dublin City Council and the County Councils of Dún Laoghaire-Rathdown, South Dublin, Kildare, and Meath.

## Map of the Three Emerging Preferred Site Options



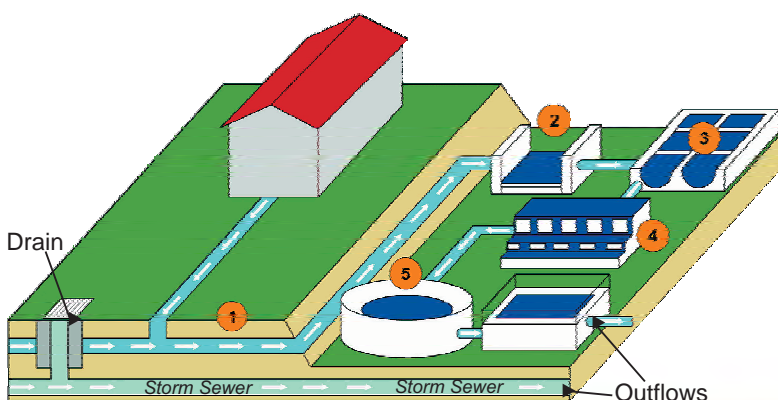
## What is Drainage and Wastewater?

Wastewater is any water whose quality has been adversely affected by human activity or industry. It can be liquid waste discharged by domestic residences, commercial properties, industry, or agriculture and it can contain a wide range of contaminants. Everyday activities like showering, brushing teeth, cooking and using the toilet create wastewater. Some of these organic products in the wastewater can be broken down easily in the environment but others are not so easily degraded. The drainage system transports this wastewater to a treatment plant where it undergoes treatment before it is discharged as clean treated effluent into our rivers or seas.

### Why do we need to treat Wastewater?

Untreated wastewater poses a threat to public health and the environment. All wastewater is ultimately discharged back into the aquatic environment and, if the treatment is inadequate, the receiving waters will be polluted. Furthermore, proper wastewater treatment systems are essential for sustaining our modern livelihood and contributing to development. Homes, businesses, industries and hospitals, along with all other water users, rely on a robust wastewater treatment system to maintain daily activities

## The Wastewater Treatment Process



### TYPICAL TREATMENT PROCESS

- Step 1:** Sewerage System
- Step 2:** Grit Chamber
- Step 3:** Primary Treatment
- Step 4:** Aeration Tanks
- Step 5:** Secondary Treatment Tank

#### NOTE:

*Ideally, wastewater treatment in a municipal treatment plant involves two main stages: primary and secondary. There are two products from the treatment process: sludge and liquid effluents. The process of wastewater treatment removes physical, chemical & biological contaminants, producing an environmentally safe fluid waste stream or sludge that is suitable for disposal or waste.*

### How do we treat Wastewater?

The process of wastewater treatment is to remove physical, chemical, and biological contaminants from the wastewater. The objective of undertaking this treatment is to produce an environmentally safe fluid waste stream together with sludge that is suitable for disposal or reuse (usually in the form of fertiliser). Primary, secondary and sometimes, tertiary treatment, of the wastewater may be needed, depending on the sensitivity of the receiving environment.

There are two main phases of treatment undertaken in wastewater plants:

#### 1) Primary Treatment

This consists of temporarily holding the wastewater and sewage in a tank where heavy solids can settle to the bottom while oil, grease, and lighter solids float to the surface. The settled and floating materials are removed and the remaining liquid may be discharged or subjected to secondary treatment.

#### 2) Secondary Treatment

This removes dissolved and suspended biological matter. Secondary treatment is typically performed by indigenous, water-borne micro-organisms in a managed habitat. Secondary treatment may require a separation process to remove the microorganisms from the treated water prior to discharge.

**Tertiary treatment may be needed** in certain circumstances where the sensitivity of the receiving environment requires it. Tertiary treatment includes nutrient reduction and UV filtration.



## Symbols Explanation to Constraints Maps

### ANNSBROOK, CLONSHAGH & NEWTOWNCORDUFF

#### LEGEND

	Archaeological Complex		Access Road
	Watercourse		Gas Transmission Pipeline
	HV Powerline		Historical Gravel Pit
	Townland Boundary		Potential Cultural Heritage Site
	Views		Record of Monument & Places
	Contours		National Inventory of Architectural Heritage (NIAH)
	Geological Heritage Site		Record of Protected Structures (RPS)
	CFRAMS 100yr Flood Outline (Fluvial)		Demesne
<b>GROUNDWATER VUNERABILITY</b>			Proposed Land Parcel
	Rock near surface		Potential Site
	Extreme		
	High		

## **APPENDIX F**

### **Facilitation Sheet**



<b>Air, Light, &amp; Noise Pollution</b> Air Issues Construction Noise General Noise Light Pollution Odour	<b>Archaeology &amp; Cultural Heritage</b> Archaeology Architecture, Listed Buildings & Monuments Cultural Heritage Protected & Locally Important Sites	<b>ASA Phase 2</b> Mapping Previous Phases and Outcomes Report and Information Materials Site Selection Methodology
<b>Communications</b> Public Consultation Landowner Consultation Media Methodology / Road Map Statutory Consultation	<b>Ecology</b> Fauna & Flora Protected & Locally Important Sites Protected Species Shellfish Waters	<b>Energy &amp; Climate Change</b> Climate Change Energy Supply Energy Usage
<b>Geology &amp; Soils</b> Geology Soil	<b>Health</b> General Health Monitoring Odour (Health-Related Issues) Vermin	<b>Landscape &amp; Amenity</b> Locally Significant Views Protected Views Screening Visual Impact
<b>Legal &amp; Statutory Process</b> Access to Land Appropriate Assessment EIS / Planning Application Oral Hearing	<b>Livelihood</b> Agriculture, Agronomy, & Horticulture Fishing & Navigation Tourism	<b>Need</b> Cost Multiple Plants / Size Population Previous Studies Proximity Principle
<b>Overburdening &amp; Community</b> Amenity Community Life Devaluation Overburdening Property	<b>Planning &amp; Zoning</b> Best Practice Development Plans & Guidelines Existing Infrastructure Future & Approved Developments Previous Precedents Proximity to Sensitive Receptors	<b>Project Issues</b> General Information Outfall Location Issues Site-Specific Issues Sludge Management Timeline
<b>Technology &amp; Risk</b> Alternatives Other WwTPs Risk Assessment Treatment Levels	<b>Traffic &amp; Construction</b> Construction Traffic / Access Issues Construction Techniques General Traffic Road Safety	<b>Water</b> Coastal Waters / Tides Flooding Ground Water Rivers & Watercourses Water Quality
<b>Other (Please Specify):</b>		
<b>Follow Up Required?</b>		