

Three Emerging Preferred Site Options Shortlisted for Further Consideration for Wastewater Treatment Plant

What is happening now?

Fingal County Council has published a report, the *Alternative Sites Assessment and Route Selection Report (Phase 2): Emerging Preferred Sites and Routes*. This report identifies three emerging preferred site options for further consideration as the location for Greater Dublin Drainage.

The three emerging preferred site options for further consideration are:

Annsbrook

Clonshagh

Newtowncorduff

The *Alternative Sites Assessment and Route Selection Report (Phase 2): Emerging Preferred Sites and Routes* and associated mapping can be downloaded at www.greaterdublindrainage.ie/project-reports/. This report sets out the process used to identify and appraise the site options, i.e. the site for the WwTP, pipeline routes, and outfall locations. Each of the nine site options is discussed in detail.

As part of the report's publication, Fingal County Council has now launched an eight week non-statutory public consultation, which runs from 14th May until 6th July 2012; more details of how you can get involved are available inside.

The purpose of this information brochure is to

- ▶ Update you on the project's development
- ▶ Invite you to participate in a new round of consultation on the three emerging preferred site options
- ▶ Provide you with background information on the project



How were the three emerging preferred site options identified?

Since the close of the first ASA Consultation (10th October to 2nd December 2011), the Technical Team has been engaged in a step-by-step, qualitative process to identify the three emerging preferred site options. The environmental and technical criteria used in this process included:

- **Agronomy and Agriculture**
- **Air Quality and Odour**
- **Capital and Operational Costs**
- **Cultural Heritage**
- **Ecology**
- **Engineering and Design**
- **Hydrology and Hydrogeology**
- **Landscape and Visual**
- **Noise and Vibration**
- **People and Communities**
- **Planning Policy**
- **Safety**
- **Soils and Geology**
- **Sustainability**
- **Traffic**

The methodology involved an iterative (step-by-step) process from which sites with the least impact emerged. This process involved a combination of detailed surveys, consultations, and workshops to assess each site under the aforementioned criteria.

More detailed information on the methodology can be found in the FAQs and the Methodology Report at www.greaterdublindrainage.ie/project-reports/.

What happens next?

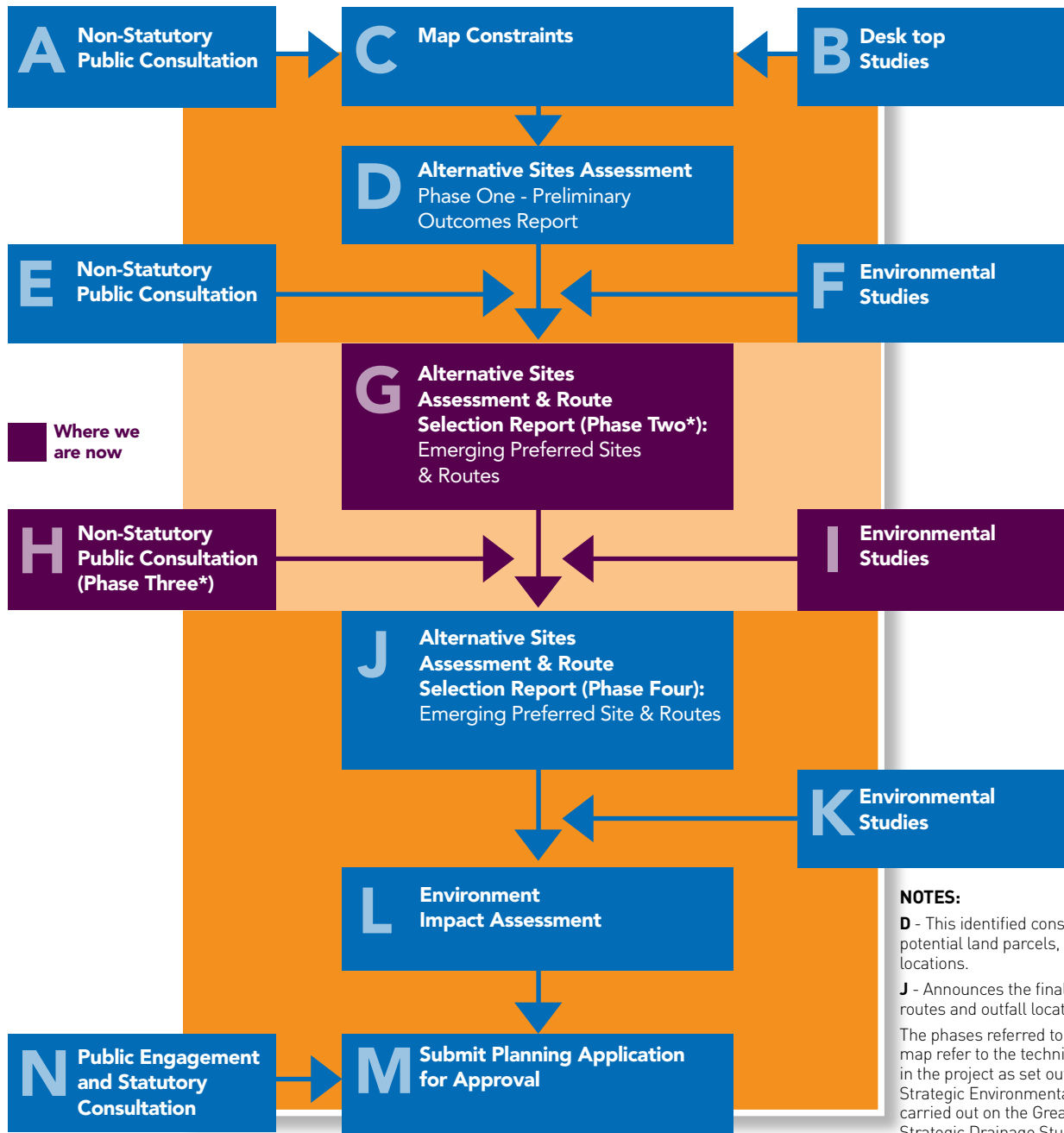
To date, this is the third in a series of non-statutory consultations to take place. This is the final non-statutory consultation opportunity before the statutory consultation, run by An Bord Pleanála, takes place when the Project Team has made an application (Please see Project Road Map).

All feedback received as part of this eight week non-statutory consultation, will be reviewed and collated into a Consultation Report, which will be published after the close of the consultation.

The feedback will be reviewed and considered by the Technical Team as it moves towards the selection of a preferred site, orbital pipeline route, and marine outfall location for Greater Dublin Drainage.

A "site option" includes an approximately 20Ha site, associated orbital pipeline routes from the load centres to the wastewater treatment plant (WwTP), pipeline routes from the WwTP to the coast, marine pipeline routes, and a marine outfall location. A final preferred site option has not yet been chosen.

Project Road Map



NOTES:

D - This identified constraints, potential land parcels, pipeline locations.

J - Announces the final site, pipeline routes and outfall location.

The phases referred to on the road map refer to the technical phases in the project as set out by the 2008. Strategic Environmental Assessment carried out on the Greater Dublin Strategic Drainage Study.

*Phase 3 refers to Public Consultation (H)



What is happening now: Public Consultation Opportunity on Three Emerging Preferred Site Options

How can I get involved?

Fingal County Council is now undertaking an eight week non-statutory consultation and all interested parties are welcome to give their views on the three emerging preferred site options. **The consultation will run from Monday, 14th May to Friday, 6th July 2012.**

This non-statutory consultation will provide all interested people and groups with an opportunity to engage with the Project Team as part of the final site option selection process. All feedback and submissions will be reviewed as part of the development of Greater Dublin Drainage.

You are welcome to attend any of four Open Days to be held in Fingal County Council, Main Street, Swords. The Project Team will be available to discuss the report, answer your questions, and listen to your views.

Open Days

- **Wednesday, 30th May, 2:00 p.m. to 8:00 p.m.**
- **Saturday, 2nd June, 11:00 a.m. to 4:00 p.m.**
- **Thursday, 14th June, 2:00 p.m. to 8:00 p.m.**
- **Saturday, 16th June, 11:00 a.m. to 4:00 p.m.**

In order to ensure stakeholder feedback is considered in advance of the project moving to the next phase, **all feedback for this consultation should be received by 5:00 p.m. on Friday, 6th July 2012.**

For further information or to make a submission, please:

Email: info@greaterdublindrainage.ie

Lo-call telephone: 1890 44 55 67

Write: Greater Dublin Drainage Project Manager, c/o RPS Group, West Pier Business Campus, Dún Laoghaire, Co. Dublin, Ireland

Visit: www.greaterdublindrainage.ie

What is being consulted on?

Fingal County Council would like to hear your views on the following:

Site Options

- What are your comments on the emerging preferred site options?

Methodology

- Has all relevant criteria been considered when determining the three emerging preferred site options?
- Is there anything else you think should be reviewed and considered?

Final Site Selection

- What do you think should be considered as part of the selection for the final preferred site route and outfall?

Any other comments?

- How would you like to be communicated with as the project progresses?
- If you have any other information you believe is relevant to the development of the project please let us know.



Project Background and Information

What is Greater Dublin Drainage?

Greater Dublin Drainage, which includes a new regional treatment plant with associated marine outfall and orbital sewer, is required to provide the Greater Dublin Area (GDA) with the strategic wastewater infrastructure required to continue to develop, both socially and economically.

The project involves developing a new:

- **regional wastewater treatment works;**
- **marine outfall; and**
- **drainage network.**

Why is it needed?

Greater Dublin Drainage is needed to provide sustainable drainage and wastewater treatment for the GDA to meet current and future economic, industrial, and residential needs. It will help protect the environment and will enable Ireland to meet the EU Water Framework Directive standards.

What has happened so far?

Fingal County Council has been engaged in the planning of a new regional wastewater treatment works, an associated marine outfall, and an orbital sewer to be located in North County Dublin since April 2011.

In May 2011, the first public consultation (Constraints Consultation) was launched and this consultation invited members of the public to comment on the proposed study area and provide information on constraints that should be considered as the project develops.

All feedback was considered by the Technical Team and in October 2011 the *Alternative Sites Assessment (Phase 1): Preliminary Screening Outcomes Report* was published. This report identified nine potential land parcels for further consideration. The nine short-listed land parcels included Annsbrook, Baldurgan, Cloghran, Clonshagh, Cookstown, Newtowncorduff, Rathartan, Saucerstown, and Tyrrelstown Little.

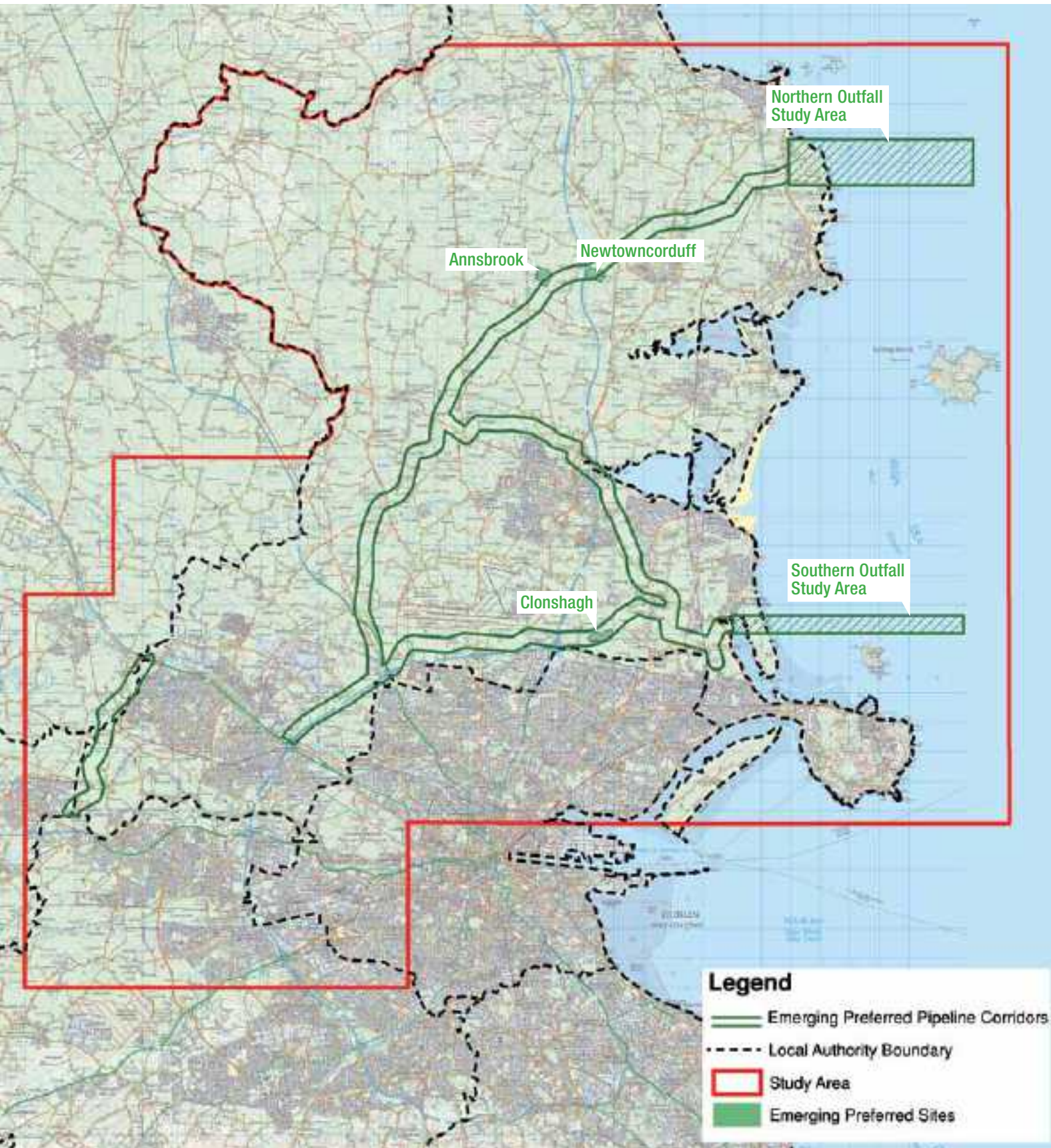
An eight-week public consultation on the Alternative Sites Assessment (ASA) commenced in October 2011 and stakeholders were asked to provide feedback on the short-listed land parcels and any issues that should be considered when determining the emerging preferred sites and associated outfalls.

The Technical Team reviewed and considered all feedback from the ASA Phase 1 consultation and has now identified the three emerging preferred site options for consultation with members of the public and other interested stakeholders.

Who is leading the project?

The Greater Dublin Drainage Project is being led by Fingal County Council, on behalf of Dublin City Council and the County Councils of Dún Laoghaire-Rathdown, South Dublin, Kildare, and Meath.

Map of the Three Emerging Preferred Site Options



Trí Rogha Nua Suímh is Dealraithí a Roghnófar le bheith ar an nGearrliosta Breithnithe Breise don Ionad Cóireála Fuíolluisce

Céard atá ar siúl anois?

Tá tuairisc foilsithe ag Comhairle Contae Fhine Gall, *The Alternative Sites Assessment and Route Selection Report (Step 2): Emerging Preferred Sites and Routes*. Sonraíonn an tuairisc seo trí rogha suímh is dealraithí a roghnófar le tuilleadh breithnithe a dhéanamh orthu chun bheith ceaptha mar shuíomh do Dhraenáil Mhórcheantar Bhaile Átha Cliath

Na trí rogha is dealraithí a roghnófar le tuilleadh breithnithe a dhéanamh orthu ná:

Sruthán Anna

Cluain Seach

An Baile Nua

Is féidir an Tuairisc *The Alternative Sites Assessment and Route Selection (Step 2): Emerging Preferred Sites and Routes* agus na léarscáileanna bainteach leis a íoslódáil ó www.greaterdublindrainage.ie/project-reports/ Leagann an tuairisc seo amach an próiseas a úsáidtear chun na roghanna suímh a aithint agus a mheas, i.e. an suíomh don ICFU, bealaí don phíblíne agus suíomhanna don phíobán sceite. Déantar plé mionsonrach ar gach ceann de na naoi shuíomh fhéideartha.

Mar pháirt d'fhoilsiú na tuairisce, tá próiseas comhairliúcháin neamhrechtúil ocht seachtaine seolta ag Comhairle Contae Fhine Gall, a bheidh ar siúl ó 14 Bealtaine go 6 Iúil 2012; tá tuilleadh sonraí faoi conas bheith páirteach ann ar fáil istigh.

Aidhm an bhróisiúir faisnéise seo ná:



Nuashonraí a thabhairt duit maidir le Forbairt an tionscadail



An deis a thabhairt duit bheith páirteach i mbabhta nua comhairliúcháin ar na trí shuíomh nua is dealraithí a roghnófar



Faisnéis chúlra maidir leis an tionscadal a chur ar fáil duit



Conas a aithníodh na trí rogha suíomh is dealraithí a roghnófar?

Ó dheireadh an Chéad Phróisis Comhairliúchán ASA (10 Deireadh Fómhair do 2 Nollaig 2011) i leith, tá an Fhoireann Theicniúil tar éis bheith ag obair ar phróiseas céim ar chéim, cáilíochtúil chun na trí rogha suíomh is dealraithí a roghnófar a aithint. I measc na gcritéar timpeallachta agus teicniúil a úsáidtear sa phróiseas seo, tá:

- Agranamaíocht agus Talmhaíocht
- Cáilíocht agus Boladh Aeir
- Costais Chaipitil agus Oibríochta
- Oidhreacht Chultúrtha
- Éiceolaíocht
- Innealtóireacht agus Dearadh
- Hidreolaíocht agus Hidrigeoalíocht
- Tírdhreach agus Cuma
- Fuaim agus Creathadh
- Daoine agus Pobail
- Polasaí Pleanála
- Slándáil
- Ithreacha agus Geolaíocht
- Inbhuanaithe
- Trácht

Úsáideadh próiseas atrialach (céim ar chéim) sa mhodheolaíocht agus roghnaíodh na suíomhanna is lú iarmharta dá réir. Bhí meascán de shuirbhéanna sonracha, comhairliúcháin agus ceardlanna sa phróiseas chun gach suíomh a mheas faoi na critéir a luadh roimhe seo.

Is féidir teacht ar fhaisnéis níos sonraí ar an mhodheolaíocht sna ceisteanna coitianta agus sa Tuairisc Mhodheolaíochta ar www.greaterdublindrainage.ie/project-reports/.

Céard a tharlóidh i ndiaidh seo?

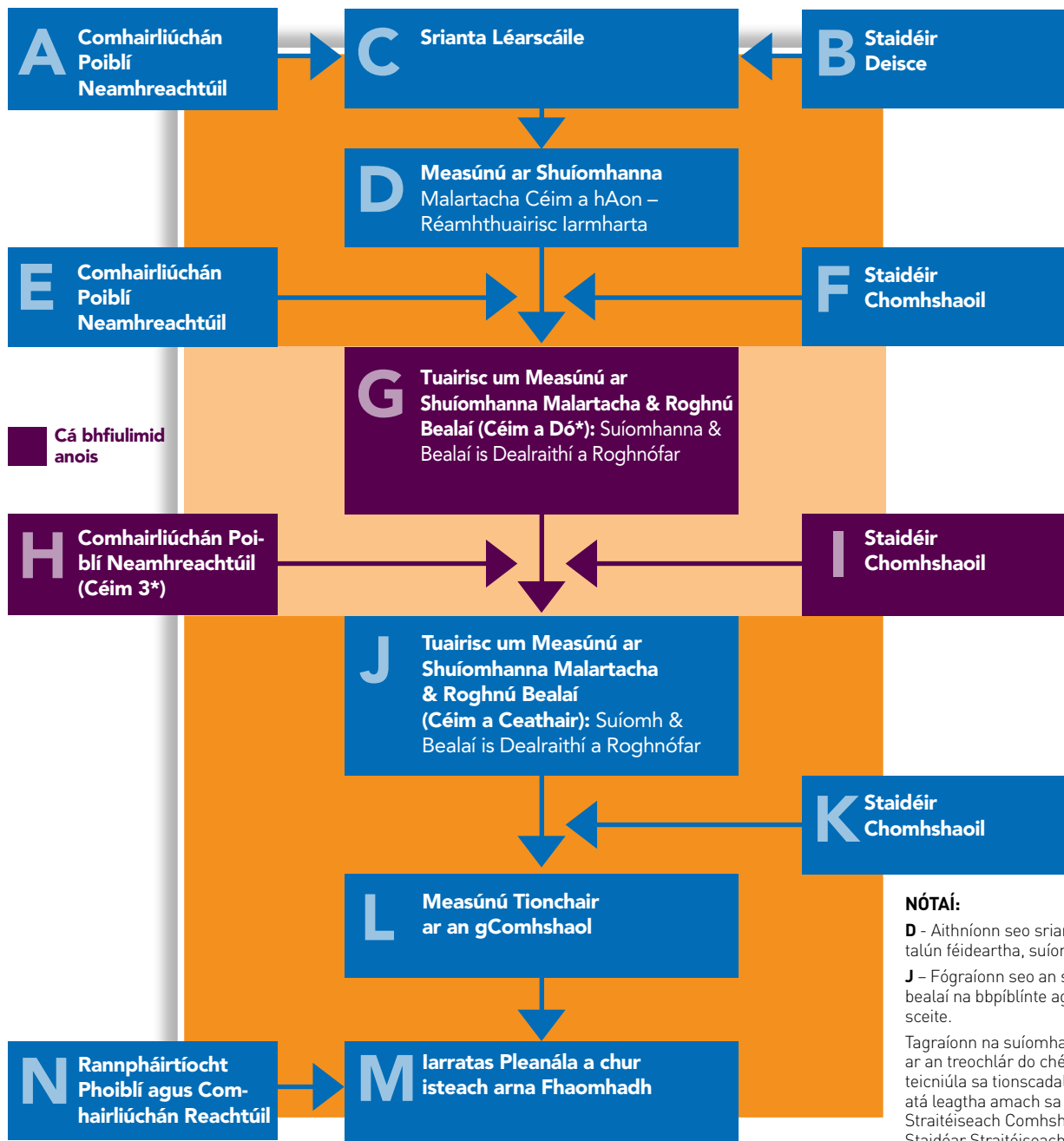
Seo é an tríú sraith comhairliúchán neamhreachtúil le bheith curtha ar bun. Seo í an deis chomhairliúcháin neamhreachtúil dheireanach a bheidh ann roimh an gcomhairliúchán reachtúil, reáchtáilte ag an mBord Pleanála, nuair a bheidh iarratas curtha isteach ag an bhFoireann Tionscadail (Féach an Treochlár).

Déanfar gach aiseolas faighte mar pháirt den phróiseas comhairliúcháin ocht seachtaine seo a athbhreithniú agus a shaincagadh i dTuarascáil Chomhairliúcháin, a fhoilseofar i ndiaidh an phróisis comhairliúcháin.

Déanfaidh an Fhoireann Theicniúil athbhreithniú ar an aiseolas agus é a mheas faoi mar a théann sí i dtreo suíomh roghnaithe, bealach do píblíne fhithiseach, agus suíomh sceite muirí a roghnú do Dhraenáil Mhórcheantar Bhaile Átha Cliath.

Is ionann “rogha suímh” agus suíomh thart ar 20Ha, bealaí píblíne fithiseacha ó na láir lódála chuig an Ionad Cóireála Fuíolluisce (ICFU), bealaí píblíne ón ICFU chuig an gcósta, bealaí píblíne muirí, agus suíomh sceite muirí. Níl an suíomh roghnaithe deiridh roghnaithe go fóill.

Treochlár an Tionscadail



■ Cá bhfiulimid anois

NÓTAÍ:

D - Aithníonn seo sriantha, dáileachtaí talún féideartha, suíomhanna píblíne.

J - Fógraíonn seo an suíomh deiridh, bealaí na bPíblínte agus an suíomh sceite.

Tagraíonn na suíomhanna a luaitear ar an treochlár do chéimeanna teicniúla sa tionscadal faoi mar atá leagtha amach sa Mheasúnú Straitéiseach Comhshaoil ar an Staidéar Straitéiseach ar Dhraenáil Mhórchearantar Bhaile Átha Cliath.

*Tagraíonn céim 3 do Chomhairliúchán Poiblí (H)



Céard atá ar siúl anois: Deis don Comhairliúchán Poiblí Maidir leis na Trí Rogha Do Shuíomhanna is Dealraithí a Roghnófar

Conas is féidir liom bheith páirteach?

Tá Comhairle Contae Fhine Gall ag obair anois ar phróiseas comhairliúcháin ocht seachtaine agus tá fáilte roimh gach páirtí ar spéis leo a gcuid dearchtaí a thabhairt faoi na trí shuíomh is dealraithí a roghnófar. **Beidh an comhairliúchán ar siúl ó Luan, 14 Bealtaine go 6 Meitheamh 2012.**

Cuirfidh an comhairliúchán neamhrechtúil an deis ar fáil do gach duine agus grúpa ar spéis leo plé leis an bhFoireann Tionscadail maidir leis an bpróiseas roghnúcháin don suíomh deiridh. Déanfar athbhreithniú ar gach aiseolas agus aighneacht mar pháirt d'fhorbairt Dhraenáil Mhórcheantar Bhaile Átha Cliath.

Tá fáilte romhat freastal ar cheithre Lá Oscailte a bheidh ar siúl i gComhairle Contae Fhine Gall, an tSráid Mhór, Sord. Beidh an Fhoireann Tionscadail ar fáil chun an tuairisc a phlé, do chuid ceisteanna a fhreagairt, agus éisteacht le do chuid tuairimí.

Laethanta Oscailte

- Céadaoin, 30 Bealtaine, 2:00p.m. go 8:00p.m.
- Satharn, 2 Meitheamh, 11:00a.m. go 4:00p.m.
- Déardaoin, 14 Meitheamh, 2:00p.m. go 8:00p.m.
- Satharn, 16th Meitheamh, 11:00a.m. go 4:00p.m.

Chun cinnte a dhéanamh de go gciallfaidh aiseolas na bpáirtithe leasmhara sula mbogann an tionscadal chun cinn chuig an gcéad chéim eile, ní mór go bhfaighfí gach aiseolas don chomhairliúchán seo roimh 5:00p.m. ar Aoine an 6ú lá d'Iúil 2012.

Chun tuilleadh eolais a fháil nó aighneacht a chur isteach:

Rphost: info@greaterdublindrainage.ie

Teileafón íosghlao: 1890 44 55 67

Scríobh chuig: Bainisteoir Tionscadail Dhraenáil Bhaile Átha Cliath, f/ch RPS Group, Campas Ghnó na Cé Thiar, Dún Laoghaire, Co. Átha Cliath, Éire

Téigh chuig: www.greaterdublindrainage.ie

Céard faoi a ndéanfar an comhairliúchán?

Ba mhaith le Comhairle Contae Fhine Gall do chuid dearchtaí a chloisteáil maidir leo seo a leanas:

Roghanna Suímh

- Céard é do bharúil maidir leis na roghanna suímh is dealraithí a roghnófar?

Modheolaíocht

- An bhfuil na critéir ábhartha go léir tar éis bheith curtha san áireamh in aimsiú na dtrí rogha suíomh is dealraithí a roghnófar?
- An bhfuil aon rud eile a cheapann tú ar chóir athbhreithniú nó machnamh a dhéanamh air?

Roghnú Deiridh Suímh

- Céard a cheapann tú ar chóir machnamh a dhéanamh air mar pháirt de roghnú an tsuímh, bhealaigh agus phíobáin sceite deiridh?

Aon nóta tráchtta eile?

- Conas mar is fearr leat go ndéanfaí cumarsáid leat faoi mar a théann an tionscadal chun cinn?
- Má tá aon eolas eile agat a cheapann tú a bheadh ábhartha d'fhorbairt an tionscadail, déan teagmháil linn agus fáilte.

Cúlra an Tionscadail agus Eolas faoi

Céard is Draenáil Mhórchéantar Bhaile Átha Cliath ann?

Tá gá le Draenáil Mhórchéantar Bhaile Átha Cliath, a chuimsíonn ionad cóireála réigiúnach nua le láthair sceite muirí agus séarach fithiseach gaolmhar, chun bonneagar fuíolluisce straitéiseach a sholáthar do Mhórchéantar Bhaile Átha Cliath (MBÁC) atá riachtanach le forbairt a dhéanamh, go sóisialta agus go heacnamaíoch araon

I gceist sa tionscadal beidh forbairt:

- oibreacha cóireála fuíolluisce nua;
- láithreach sceite muirí; agus
- líonra draenála.

Cén fáth a bhfuil gá leis?

Tá gá le Draenáil Mhórchéantar Bhaile Átha Cliath chun draenáil agus cóireáil fuíolluisce inbhuanaithe a chur ar fáil do MBÁC chun freastal ar a gcuid riachtanas eacnamaíoch, tionsclaíoch agus cónaitheach amach anseo. Beidh sé ina chabhair i gcosaint an chomhshaoil agus cuirfidh sé ar chumas na hÉireann Creatchaighdeáin Treorach Uisce an AE a chomhlíonadh.

Céard atá tarlaithe go dtí seo?

Tá Comhairle Contae Fhine Gall tar éis bheith i mbun pleanála ar oibreacha cóireála fuíolluisce nua, láthair sceite muirí gaolmhar, agus séarach fithiseach atá le bheith suite i dTuaisceart Bhaile Átha Cliath ó mhí Aibreáin 2011.

I mí Bealtaine 2011, seoladh an chéad chomhairliúchán pobail (Comhairliúchán maille le Srianata) agus tugadh cuireadh sa chomhairliúchán seo do dhaoine ón bpobal an limistéar staidéir molta a phlé agus eolas a thabhairt

maidir le srianata ar chóir iad a chur san áireamh de réir mar a bheadh an tionscadal ag dul ar aghaidh.

Chíor an Fhoireann Theicniúil gach aiseolas a fuarthas agus i mí Dheireadh Fómhair 2011 foilsíodh *The Alternative Sites Assessment (Step 1): Preliminary Screening Outcomes*. D'aithin an tuarascáil seo naoi ndáileacht talún le breithniú breise a dhéanamh orthu. Seo a leanas na naoi ndáileacht talún a bhí ar an ngearrliosta; Sruthán Anna, Baile Deargáin, Clochrán, Cluain Seach, Baile an Chócaigh, An Baile Nua, Ráth Thoirtín, Baile an tSásaraigh agus Baile an Trialaigh Beag.

Thosaigh comhairliúchán ocht seachtaine maidir le Measúnú ar Shuíomhanna Malartacha (MSM) i mí Dheireadh Fómhair 2011 agus iarradh ar pháirtithe leasmhara aiseolas a sholáthar faoi na dáileachtaí talún agus faoi aon mhórchéist ar chóir í a chur san áireamh le linn roghnú na suíomhanna agus láithreacha sceite gaolmhara.

Rinne an Fhoireann Theicniúil athbhreithniú agus cíoradh ar gach píosa aiseolais ó gcomhairliúchán MSM i gcéim 1 agus tá trí shuíomh aitheanta aige is dealraithí a roghnófar le cur faoi bhráid an phobail agus faoi bhráid gach páirtithe leasmhara eile.

Cé atá i gceannas an tionscadail?

Is é Comhairle Contae Fhine Gall atá i gceannas Thionscadal Draenála Mhórchéantar Bhaile Átha Cliath, thar ceann Chomhairle Cathrach Bhaile Átha Cliath agus Chomhairlí Contae Dhún Laoghaire- Ráth an Dúin, Dheisceart Bhaile Átha Cliath, Chill Dara agus Chomhairle Contae na Mí.

Léarscáil de na Trí Shuíomh is Dealraithí a Roghnófar

