

Annual Environmental Report

2021



Inniskeen

D0348-01

CONTENTS

1 EXECUTIVE SUMMARY AND INTRODUCTION TO THE 2021 AER

- 1.1 ANNUAL STATEMENT OF MEASURES
- 1.2 TREATMENT SUMMARY
- 1.3 ELV OVERVIEW
- 1.4 LICENSE SPECIFIC REPORT INCLUDED IN AER

2 TREATMENT PLANT PERFORMANCE AND IMPACT SUMMARY

- 2.1 INNISKEEN WWTP - TREATED DISCHARGE
 - 2.1.1 INFLUENT SUMMARY - INNISKEEN WWTP
 - 2.1.2 EFFLUENT MONITORING SUMMARY - INNISKEEN WWTP -
 - 2.1.3 AMBIENT MONITORING SUMMARY FOR THE TREATMENT PLANT DISCHARGE -
 - 2.1.4 OPERATIONAL REPORTS SUMMARY FOR INNISKEEN WWTP
 - 2.1.5 SLUDGE/OTHER INPUTS TO INNISKEEN WWTP

3 COMPLAINTS AND INCIDENTS

- 3.1 COMPLAINTS SUMMARY
- 3.2 REPORTED INCIDENTS SUMMARY
 - 3.2.1 SUMMARY OF INCIDENTS
 - 3.2.2 SUMMARY OF OVERALL INCIDENTS

4 INFRASTRUCTURAL ASSESSMENT AND PROGRAMME OF IMPROVEMENTS

- 4.1 STORM WATER OVERFLOW IDENTIFICATION AND INSPECTION REPORT
 - 4.1.1 SWO IDENTIFICATION AND INSPECTION SUMMARY REPORT
- 4.2 REPORT ON PROGRESS MADE AND PROPOSALS BEING DEVELOPED TO MEET THE IMPROVEMENT PROGRAMME REQUIREMENTS
 - 4.2.1 SPECIFIED IMPROVEMENT PROGRAMME SUMMARY
 - 4.2.2 IMPROVEMENT PROGRAMME SUMMARY
 - 4.2.3 SEWER INTEGRITY RISK ASSESSMENT

5 LICENCE SPECIFIC REPORTS

- 5.1 DRINKING WATER ABSTRACTION POINT RISK ASSESSMENT
- 5.2 PRIORITY SUBSTANCES ASSESSMENT
- 5.3 SMALL STREAM RISK SCORE ASSESSMENT

6 CERTIFICATION AND SIGN OFF

6.1 SUMMARY OF AER CONTENTS

7 APPENDIX

7.1 SMALL STREAM RISK SCORE ASSESSMENT

1 EXECUTIVE SUMMARY AND INTRODUCTION TO THE 2021 AER

This Annual Environmental Report has been prepared for D0348-01, Inniskeen, in Monaghan in accordance with the requirements of the wastewater discharge licence for the agglomeration. Specified reports where relevant are included as an appendix to the AER.

1.1 ANNUAL STATEMENT OF MEASURES

A summary of any improvements undertaken is provided where applicable.

There was no major capital or operational changes undertaken

1.2 TREATMENT SUMMARY

The agglomeration is served by a wastewater treatment plant(s)

- INNISKEEN WWTP with a Plant Capacity PE of 1800, the treatment type is 3P - Tertiary P removal

1.3 ELV OVERVIEW

The overall compliance of the final effluent with the Emission Limit Values (ELVs) is shown below. More detailed information on the below ELV's can be found in Section 2.

Discharge Point Reference	Treatment Plant	Discharge Type	Compliance Status	Parameters failing if relevant
TPEFF2400D0348SW001	INNISKEEN WWTP	Treated	Compliant	N/A

1.4 LICENCE SPECIFIC REPORTING

Assessment / Report

Small Stream Risk Score Assessment

2 TREATMENT PLANT PERFORMANCE AND IMPACT SUMMARY

2.1 INNISKEEN WWTP - TREATED DISCHARGE

2.1.1 INFLUENT MONITORING SUMMARY - INNISKEEN WWTP

A summary of influent monitoring for the treatment plant is presented below. This monitoring is primarily undertaken in order to determine the overall efficiency of the plant in removing pollutants from the raw wastewater.

Parameters	Number of Samples	Annual Max	Annual Mean
BOD, 5 days with Inhibition (Carbonaceous BOD) mg/l	8	2452	618
Suspended Solids mg/l	8	5890	1926
Total Phosphorus (as P) mg/l	8	25	6.03
COD-Cr mg/l	8	11360	2413
Total Nitrogen mg/l	8	132	31
Hydraulic Capacity	N/A	1370	273

If other inputs in the form of sludge / leachate are added to the WWTP then these are included in Section 2.1.5 if applicable.

Significance of Results:

The annual mean hydraulic loading is less than the peak Treatment Plant Capacity. The annual maximum hydraulic loading is greater than the peak Treatment Plant Capacity. Further details on the plant capacity and efficiency can be found under the sectional 'Operational Performance Summary'.

2.1.2 EFFLUENT MONITORING SUMMARY - TPEFF2400D0348SW001

Parameter	WWDL ELV (Schedule A)	ELV with Condition 2 Interpretation included Note 1	Interim % reduction from influent concentration	Number of sample results	Number of exceedances	Number of exceedances with Condition 2 Interpretation included	Annual Mean	Overall Compliance (Pass/Fail)
COD-Cr mg/l	125	250	N/A	8	N/A	N/A	23	Pass
Suspended Solids mg/l	10	25	N/A	8	1	N/A	6.25	Pass
BOD, 5 days with Inhibition (Carbonaceous BOD) mg/l	10	20	N/A	8	N/A	N/A	1.34	Pass
pH units	9.00	9.00	N/A	11	N/A	N/A	7.32	Pass
Total Phosphorus (as P) mg/l	2.00	2.40	N/A	8	N/A	N/A	0.282	Pass
Ammonia-Total (as N) mg/l	2.00	2.40	N/A	8	N/A	N/A	0.025	Pass
ortho-Phosphate (as P) - unspecified mg/l	1.50	1.80	N/A	8	N/A	N/A	0.101	Pass
Enterococci (Intestinal) MPN/100ml	N/A	N/A	N/A	2	N/A	N/A	1457	
Nitrite (as N) mg/l	N/A	N/A	N/A	7	N/A	N/A	0.034	

Parameter	WWDL ELV (Schedule A)	ELV with Condition 2 Interpretation included Note 1	Interim % reduction from influent concentration	Number of sample results	Number of exceedances	Number of exceedances with Condition 2 Interpretation included	Annual Mean	Overall Compliance (Pass/Fail)
Total Nitrogen mg/l	N/A	N/A	N/A	8	N/A	N/A	15	
E. Coli MPN/100ml	N/A	N/A	N/A	3	N/A	N/A	938	
Nitrate (as NO3) mg/l	N/A	N/A	N/A	7	N/A	N/A	11	
Coliform Bacteria (Total) no./100mls	N/A	N/A	N/A	1	N/A	N/A	27230	
Enterococci (Intestinal) cfu/100ml	N/A	N/A	N/A	1	N/A	N/A	N/A	
Faecal coliforms cfu/100ml	N/A	N/A	N/A	3	N/A	N/A	1108	
Temperature °C	N/A	N/A	N/A	11	N/A	N/A	9.37	

Notes:

1 – This represents the Emission Limit Values after the Interpretation provided for under Condition 2 of the licence is applied

2 – For pH the WWDA specifies a range of pH 6 - 9

Cause of Exceedance(s):

Not applicable

Significance of Results:

The WWTP is compliant with the ELV's set in the Wastewater Discharge Licence.

2.1.3 AMBIENT MONITORING SUMMARY FOR THE TREATMENT PLANT DISCHARGE TPEFF2400D0348SW001

A summary of monitoring from ambient monitoring points associated with the wastewater discharge is provided in the sections below. For discharges to rivers upstream (U/S) and downstream (D/S) location data is provided. For other ambient points in lakes, coastal or transitional waters, monitoring data from the most appropriate monitoring station is selected.

The table below provides details of ambient monitoring locations and details of any designations as sensitive areas.

Ambient Monitoring Point from WWDL (or as agreed with EPA)	Irish Grid Reference	River Station Code	Bathing Water	Drinking Water	FWPM	Shellfish	WFD Ecological Status
Upstream	293998, 306647	RS06F010650	No	No	No	No	Good
Downstream	293998, 306647	RS06F010670	No	No	No	No	Good

The table below provides a summary of monitoring results for designated ambient monitoring points. The upstream and downstream annual mean values are shown (mg/l), and the difference between both monitoring stations is given as a percentage of the Environmental Quality Standard (EQS) where relevant.

Parameter Name	Upstream Monitoring Point Location	Upstream Monitoring Point Annual Mean	Downstream Monitoring Point Location	Downstream Monitoring Point Annual Mean	EQS	% of EQS
BOD - 5 days (Total) mg/l	RS06F010650	1.40	RS06F010670	1.53	1.50	8.9
Ammonia-Total (as N) mg/l	RS06F010650	0.034	RS06F010670	0.089	0.065	84.9
ortho-Phosphate (as P) - unspecified mg/l	RS06F010650	0.028	RS06F010670	0.024	0.035	-11.8
Alkalinity-total (as CaCO₃) mg/l	RS06F010650	70	RS06F010670	N/A	N/A	

Parameter Name	Upstream Monitoring Point Location	Upstream Monitoring Point Annual Mean	Downstream Monitoring Point Location	Downstream Monitoring Point Annual Mean	EQS	% of EQS
Total Hardness (as CaCO₃) mg/l	RS06F010650	90	RS06F010670	N/A	N/A	
Total Oxidised Nitrogen (as N) mg/l	RS06F010650	0.898	RS06F010670	N/A	N/A	
Conductivity @25°C µS/cm	RS06F010650	229	RS06F010670	N/A	N/A	
Enterococci (Intestinal) cfu/100ml	RS06F010650	360	RS06F010670	220	N/A	
Nitrite (as N) µg/l	RS06F010650	3.12	RS06F010670	N/A	N/A	
E. Coli MPN/100ml	RS06F010650	284	RS06F010670	206	N/A	
Dissolved Oxygen mg/l	RS06F010650	9.10	RS06F010670	9.65	N/A	
pH units	RS06F010650	7.86	RS06F010670	7.88	N/A	
Coliform Bacteria (Total) MPN/100ml	RS06F010650	15005	RS06F010670	1142	N/A	
True Colour mg/litre Pt Co	RS06F010650	34	RS06F010670	N/A	N/A	
Enterococci (Intestinal) MPN/100ml	RS06F010650	65	RS06F010670	80	N/A	
Faecal coliforms cfu/100ml	RS06F010650	317	RS06F010670	260	N/A	

Parameter Name	Upstream Monitoring Point Location	Upstream Monitoring Point Annual Mean	Downstream Monitoring Point Location	Downstream Monitoring Point Annual Mean	EQS	% of EQS
Total Nitrogen mg/l	RS06F010650	3.02	RS06F010670	2.86	N/A	
Nitrate (as N) mg/l	RS06F010650	0.890	RS06F010670	N/A	N/A	
Chloride mg/l	RS06F010650	18	RS06F010670	N/A	N/A	
Temperature °C	RS06F010650	11	RS06F010670	11	N/A	
Dissolved Oxygen % Saturation	RS06F010650	76	RS06F010670	N/A	N/A	

Significance of Results:

The WWTP discharge was compliant with the ELV's set in the wastewater discharge licence.

The ambient monitoring results do not meet the required EQS at the downstream monitoring location. The EQS relates to the Oxygenation and Nutrient Conditions set out in the Surface Water Regulations 2009.

Based on ambient monitoring results a deterioration in Ammonia, BOD, concentrations downstream of the effluent discharge is noted.

The discharge from the wastewater treatment plant does not have an observable negative impact on the Water Framework Directive status.

2.1.4 OPERATIONAL PERFORMANCE SUMMARY - INNISKEEN WWTP

2.1.4.1 Treatment Efficiency Report - INNISKEEN WWTP

Treatment efficiency is based on the removal of key pollutants from the influent wastewater by the treatment plant. In essence the calculation is based on the balance of load coming into the plant versus the load leaving the plant. The efficiency is presented as a percentage removal rate.

A summary presentation of the efficiency of the treatment process including information for all the parameters specified in the licence is included below:

Parameter	Influent mass loading (kg/year)	Effluent mass emission (kg/year)	Efficiency (% reduction of influent load)
SS	283904	844	100
COD	355740	3091	99
TP	889	38	96
cBOD	91082	180	100
TN	4529	2033	55

Note: The above data is based on sample results for the number of dates reported

2.1.4.2 Treatment Capacity Report Summary - INNISKEEN WWTP

Treatment capacity is an assessment of the hydraulic (flow) and organic (the amount of pollutants) load a treatment plant is designed to treat versus the current loading of that plant.

INNISKEEN WWTP	
Peak Hydraulic Capacity (m ³ /day) - As Constructed	1226
DWF to the Treatment Plant (m ³ /day)	409
Current Hydraulic Loading - annual max (m ³ /day)	1370
Average Hydraulic loading to the Treatment Plant (m ³ /day)	273
Organic Capacity (PE) - As Constructed	1800
Organic Capacity (PE) - Collected Load (peak week) ^{Note1}	338
Organic Capacity (PE) - Remaining	1462
Will the capacity be exceeded in the next three years? (Yes/No)	No

Nominal design capacities can be based on conservative design principles. In some cases assessment of existing plants has shown organic capacities significantly higher than the nominal design capacity. Accordingly plants that appear to be overloaded when comparing a collected peak load with the nominal design capacity can be fully compliant due to the safety factors in the original design.

2.1.5 SLUDGE / OTHER INPUTS - INNISKEEN WWTP

'Other inputs' to the waste water treatment plant are summarised in table below

Input type	Quantity	Unit	P.E.	% of load to WWTP	Included in Influent Monitoring (Y/N)?	Is there a leachate/sludge acceptance procedure for the WWTP?	Is there a dedicated leachate/sludge acceptance facility for the WWTP? (Y/N)
There is no Sludge and Other Input data for the Treatment Plant included in the AER.							

3 COMPLAINTS AND INCIDENTS

3.1 COMPLAINTS SUMMARY

A summary of complaints of an environmental nature related to the discharge(s) to water from the WWTP and network is included below.

Number of Complaints	Nature of Complaint	Number Open Complaints	Number Closed Complaints
There were no relevant environmental complaints in 2021.			

3.2 REPORTED INCIDENTS SUMMARY

Environmental incidents that arise in an agglomeration are reported on an on-going basis in accordance with our waste water discharge licences. Where an incident occurs and it is reportable under the licence, it is reported to the Environmental Protection Agency through their Environmental Data Exchange Network, or in some instances by telephone. Some incidents which arise in the agglomeration are recorded by Irish Water but may not be reportable under our licence for example where the incident does not have an impact on environmental performance.

A summary of reported incidents is included below.

3.2.1 SUMMARY OF INCIDENTS

Incident Type	Cause	No. of incident occurrences	Recurring (Y/N)	Closed (Y/N)
There were no reportable incidents in 2021.				

3.2.2 SUMMARY OF OVERALL INCIDENTS

Question	Answer
Number of Incidents in 2021	0
Number of Incidents reported to the EPA via EDEN in 2021	0
Explanation of any discrepancies between the two numbers above	N/A

4 INFRASTRUCTURAL ASSESSMENTS AND PROGRAMME OF IMPROVEMENTS

4.1 STORM WATER OVERFLOW IDENTIFICATION AND INSPECTION REPORT

A summary of the operation of the storm water overflows and their significance where known is included below:

4.1.1 SWO IDENTIFICATION

WWDL Name / Code for Storm Water Overflow (chamber) where applicable	Irish Grid Ref. (outfall)	Included in Schedule of the WWDL	Significance of the overflow(High / Medium / Low)	Assessed against DoEHLG Criteria	No. of times activated in 2021 (No. of events)	Total volume discharged in 2021 (m3)	Monitoring Status
SW-2	293926, 306700	Yes	Low	Meeting	Unknown	Unknown	Not Monitored

Any TBC SWO(s) were identified as part of the on-going National SWO programme and will be updated in subsequent AER(s) once the information is confirmed.

SWO Summary	
How much sewage was discharged via SWOs in the agglomeration in the year (m3)?	Unknown
Is each SWO identified as not meeting DoEHLG Guidance included in the Programme of Improvements?	N/A
The SWO Assessment included the requirements of relevant of WWDL schedules?	N/A
Have the EPA been advised of any additional SWOs / changes to Schedule C3 and A4 under Condition 1.7?	N/A

4.2 REPORT ON PROGRESS MADE AND PROPOSALS BEING DEVELOPED TO MEET THE IMPROVEMENT PROGRAMME REQUIREMENTS.

4.2.1 SPECIFIED IMPROVEMENT PROGRAMME SUMMARY

A wastewater discharge licence may require a number of reports on specific subject areas to be prepared for the agglomeration in question. These reports are submitted to the EPA as part of the Annual Environmental Report. This section provides a list of the various reports required for this agglomeration and a brief summary of their recommendations.

Specified Improvement Programmes (under Schedule A and C of WWDL)	Description	Licence Schedule	Licence Completion Date	Date Expired? (N/NA/Y)	Status of Works	Timeframe for Completing the Work	Comments
There are no Specified Improvement Programmes for this Agglomeration.							

A summary of the status of any other improvements identified by under Condition 5 assessments- is included below.

4.2.2 IMPROVEMENT PROGRAMME SUMMARY

Improvement Identifier	Improvement Description / or any Operational Improvements	Improvement Source	Expected Completion Date	Comments
No additional improvements planned at this time.				

4.2.3 SEWER INTEGRITY RISK ASSESSMENT

The utilisation of multiple capital maintenance programmes and the outputs of the workshops with the Local Authority Operations Staff held under the programme can be used to satisfy the requirements of Condition 5 regarding network integrity. Improvement works identified by way of these programmes and workshops will be included in the Improvements Summary Tables 4.2.1 and 4.2.2.

5 LICENCE SPECIFIC REPORTS

A wastewater discharge licence may require a number of reports on specific subject areas to be prepared for the agglomeration in question. These reports are submitted to the EPA as part of the Annual Environmental Report. This section provides a list of the various reports required for this agglomeration and a brief summary of their recommendations.

Licence Specific Report	Required by licence	Year included in AER	Included in this AER
Drinking Water Abstraction Point Risk Assessment	Yes	2014	No
Priority Substances Assessment	Yes	2011	No
Small Stream Risk Score Assessment	Yes	2017	Yes

6 CERTIFICATION AND SIGN OFF

6.1 SUMMARY OF AER CONTENTS

Parameter	Answer
Does the AER include an Executive Summary?	Yes
Does the AER include an assessment of the performance of the Waste Water Works (i.e. have the results of assessments been interpreted against WWDL requirements and or Environmental Quality Standards)?	Yes
Has a Technical amendment/licence review application been submitted to the Agency by IW?	No
List reason e.g. additional SWO identified	N/A
Is there a need to request/advise the EPA of any modification to the existing WWDL with respect to condition 4 changes to monitoring location, frequency etc	Yes
List reason e.g. changes to monitoring requirements	Ambient monitoring location changes
Have these processes commenced?	No
Are all outstanding reports and assessments from previous AERs included as an appendix to this AER	Yes

I certify that the information given in this Annual Environmental Report is truthful, accurate and complete:

Signed: Date: 20/04/2022

This AER has been produced by Irish Water's Environmental Information System (EIMS) and has been electronically signed off in that system for and on behalf of ,

Katherine Walshe

Acting Head of Environmental Regulation.

7 APPENDIX

Appendix
Appendix 7.1 - Small Stream Risk Score Assessment

Iniskeen wwtp SSRS

River: <u>Fare</u>	Code:	Date: <u>15-4-21</u>	Time: <u>15:45</u>
Station no.: <u>4/5 Iniskeen</u>	Location:	Grid (6 figure):	
Field Chemistry		Stream Order: <u>3rd</u>	Stream flow: Riffle <u>Riffle/Glide</u> Slow flow
DO%		Modifications: Y/N Canalised-widened-bank erosion-arterial drainage	
DO mg/l		Dominant Types: Bedrock Boulder (>128mm) <u>Cobble (32-128mm)</u> Gravel (8-32mm) Fine Gravel (2-8mm) Sand (0.25-2mm) Silt (<0.25mm)	
Temp (°C)		Slope: Low - <u>Medium</u> - High - Very High	
Conductivity		Geology: <u>Calcareous-Siliceous-Mixed</u>	Shading: High - <u>Moderate</u> - Low - None
pH		Substratum Condition: Calcareous-Compacted-Loose - <u>Normal</u>	Cattle access Y: upstream - downstream <u>or N</u>
Bank width (cm)		Substratum: <u>Stoney bottom-Muddy bottom-Mud over stones</u>	Photo: Y / N
Wet width (cm)		Degree of siltation: Clean- <u>Slight</u> -Moderate-Heavy	
Avg Depth (cm)		Depth of mud: None: <u><1cm</u> 1-5cm: 5-10cm: >10cm	
Staff gauge		Litter: <u>None</u> - Present - Moderate - Abundant	Sewage Fungus: <u>None</u> - Present - Moderate - Abundant
Velocity	Colour	Filamentous Algae: None - <u>Present</u> - Moderate - Abundant	Sample retained: Y / N
Torrential	None	Main land use u/s: Pasture Urban Bog Tillage Forestry Other	Sampled in Minutes: Pond net x <u>3</u> Stone wash x <u>3</u> Weed sweep x <u>1</u>
Fast	<u>Slight</u>		
<u>Moderate</u>	Moderate		
Slow	High		
Very slow			
Clarity	Discharge		
Very clear	Flood		
<u>Clear</u>	<u>Normal</u>		
Slightly turbid	Low		
Highly turbid	Very Low		
	Dry		
	Recent Flood		

General Comments:

Macroinvertebrate Composition

The macroinvertebrates are divided into the following 5 specific groups:

- Group 1 = Ephemeroptera (3-tails) - note that tails may be damaged during sampling
- Group 2 = Plecoptera (2-tails) - note that tails may be damaged during sampling
- Group 3 = Trichoptera
- Group 4 = G.O.L.D (Gastropoda, Oligochaeta and Diptera)
- Group 5 = *Asellus*
- Calculate the total number of taxa and relative abundance of each macroinvertebrate group below: (Abundance - Ab)

Relative Abundance

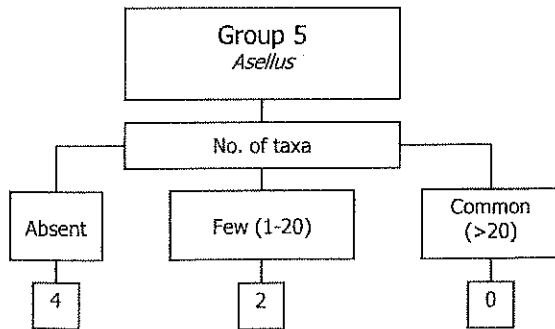
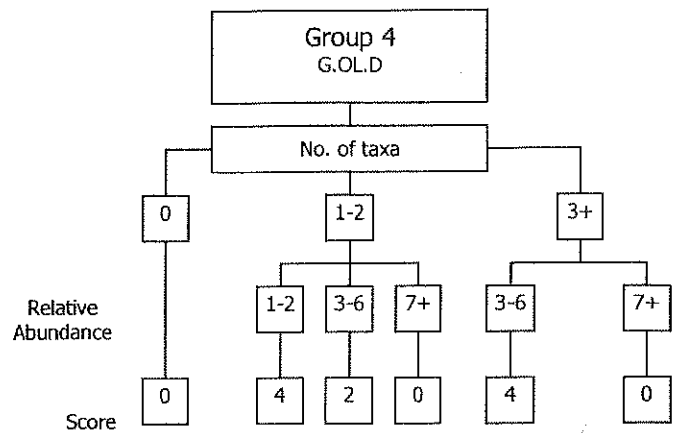
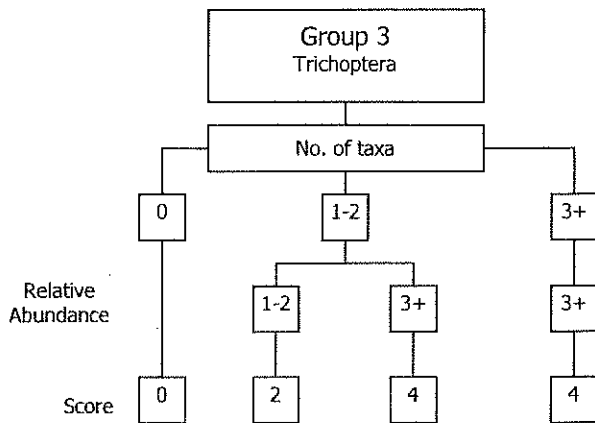
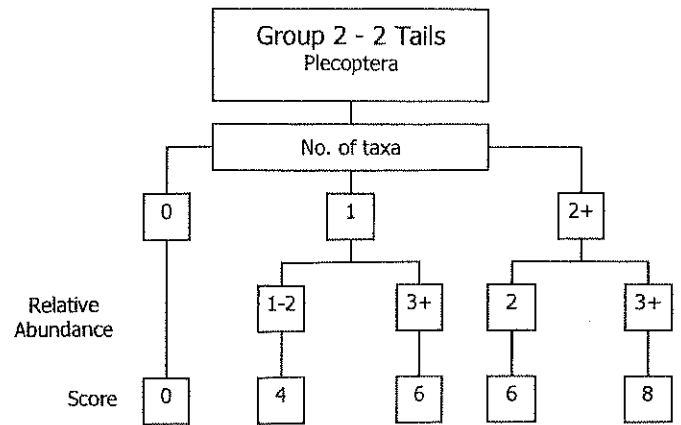
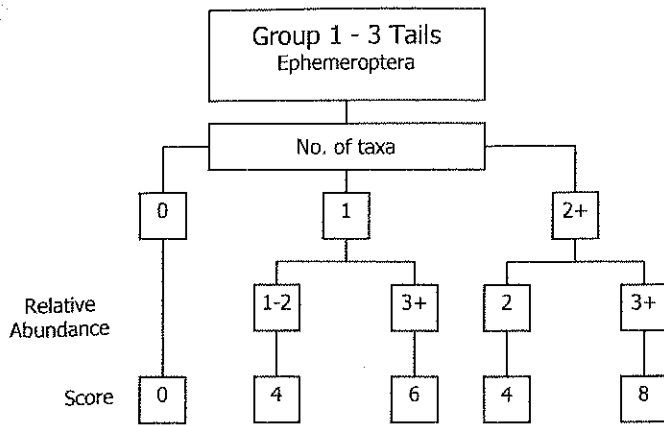
1-5	1
6-20	2
21-50	3
51-100	4
101+	5

Ephemeroptera:		<i>Ecdyonurus</i> Ab	<u>1</u>	Plecoptera:		<i>Leuctra</i> Ab	<u>2</u>
		<i>Rhithrogena</i> Ab	<u>1</u>			<i>Isoperla</i> Ab	
		<i>Heptagenia</i> Ab	<u>1</u>			<i>Protonemura</i> Ab	
		<i>Ephemerella</i> Ab				<i>Amphinemura</i> Ab	
		<i>Caenis</i> Ab				<i>Perla</i> Ab	<u>1</u>
		<i>Paraleptophlebia</i> Ab				<i>Dinocras</i> Ab	
		<i>Ephemera danica</i> Ab				Other Plecop Ab	
		Other Ephem Ab				Other Plecop Ab	
Total no. of taxa	<u>3</u>	Total Relative Abundance	<u>3</u>	Total no. of Taxa	<u>2</u>	Total Relative Abundance	<u>3</u>
Trichoptera:		G.O.L.D.:	<i>Lymnaea</i> (G) Ab	Chironomidae (D) Ab		Asellus	
			<i>Potamopyrgus</i> (G) Ab		<i>Chironomus</i> (D) Ab	Absent	
			<i>Planorbis</i> (G) Ab		Simuliidae (D) Ab	Few/Low <input checked="" type="checkbox"/>	
			<i>Ancylus</i> (G) Ab		<i>Dicranota</i> (D) Ab	<u>1</u>	Common/ Numerous
			<i>Physa</i> (G) Ab		Tipulidae (D) Ab		
			<i>Lumbriculus</i> (OI) Ab		Ceratopogonidae (D) Ab		
			<i>Eiseniella</i> (OI) Ab		Other GOLD Ab		
			Tubificidae (OI) Ab				
			Other Trichoptera Ab				
Total no. of Taxa	<u>1</u>	Total Relative Abundance	<u>1</u>	Total no. of Taxa	<u>1</u>	Total Relative Abundance	<u>1</u>

NOTE: *Asellus* must be recorded as absent if none are found

NOTE *Baetis* is an Ephemeropteran and is the most commonly occurring invertebrate genus in streams in Ireland. It is vital that *Baetis* is not counted in SSRS. See Appendix B for more details on how to identify *Baetis*.

Step 1. Calculate the Index Score by circling the appropriate box representing the total number of taxa and the total abundance calculated from *each macroinvertebrate group* calculated from page 1 of the recording sheet and enter in to the boxes in Step 2.



Step 2

- a) Index Score Group 1
- b) Index Score Group 2
- c) Index Score Group 3
- d) Index Score Group 4
- e) Index Score Group 5

8
8
2
4
2

Step 3. Calculate the Total Index Score, the Average Index Score and the SSR Score using the boxes below

Total Index Score (TIS) sum (a+b+c+d+e) 24

Average Index Score (AIS) TIS/5 (5 for 5 groups) 4.8

SSR Score (AIS x 2) 9.6

Step 4. Assess the stream by comparing the final SSR score with the categories below and tick the appropriate box

> 7.25 Probably not at risk

> 6.5 - 7.25 Indeterminate Stream may be at risk

< 6.5 Stream at risk

Surveyor (signed): John P. McEntee Name (print): JOHN PAUL MCENTEE Date: 15 / 4 / 21

Inisheen WWTP SSRS

River: Fane	Code:	Date: 15-4-21	Time: 15:00
Station no. DIS Inisheen WWTP	Location:	Grid (6 figure):	
Field Chemistry		Stream Order: 3rd	Stream flow: Riffle Riffle/Glide Slow flow
DO%		Modifications: Y/N Canalised-widened-bank erosion-arterial drainage	
DO mg/l		Dominant Types: Bedrock	
Temp (°C)		Boulder (>128mm)	
Conductivity		Cobble (32-128mm)	
pH		Gravel (8-32mm)	
Bank width (cm)		Fine Gravel (2-8mm)	
Wet width (cm)		Sand (0.25-2mm)	
Avg Depth (cm)		Silt (<0.25mm)	
Staff gauge		Slope: Low - Medium - High - Very High	Shading: High - Moderate - Low - None
Velocity	Colour	Geology: Calcareous-Siliceous-Mixed	Cattle access Y: upstream - downstream or N
Torrential	None	Substratum Condition: Calcareous-Compacted-Loose - Normal	
Fast	Slight	Substratum: Stoney bottom Muddy bottom-Mud over stones	Photo: Y / N
Moderate	Moderate	Degree of siltation: Clean-Slight-Moderate-Heavy	
Slow	High	Depth of mud: None <1cm 1-5cm 5-10cm >10cm	
Very slow		Litter: None - Present - Moderate - Abundant	
Clarity	Discharge	Filamentous Algae: None - Present - Moderate - Abundant	Sewage Fungus: None - Present - Moderate - Abundant
Very clear	Flood	Main-land use u/s: Pasture Urban Bog Tillage Forestry Other	Sample retained: Y / N
Clear	Normal		Sampled in Minutes: Pond net x 2 Stone wash x 3 Weed sweep x 1
Slightly turbid	Low		
Highly turbid	Very Low		
	Dry		
	Recent Flood		

General Comments:

Macroinvertebrate Composition

The macroinvertebrates are divided into the following 5 specific groups:

- Group 1 = Ephemeroptera (3-tails) - note that tails may be damaged during sampling
- Group 2 = Plecoptera (2-tails) - note that tails may be damaged during sampling
- Group 3 = Trichoptera
- Group 4 = G.O.L.D (Gastropoda, Oligochaeta and Diptera)
- Group 5 = Asellus

Calculate the total number of taxa and relative abundance of each macroinvertebrate group below: (Abundance - Ab)

Relative Abundance	
1-5	1
6-20	2
21-50	3
51-100	4
101+	5

Ephemeroptera:

<i>Ecdyonurus</i> Ab	2
<i>Rhithrogena</i> Ab	2
<i>Heptagenia</i> Ab	
<i>Ephemerella</i> Ab	
<i>Caenis</i> Ab	
<i>Paraleptophlebia</i> Ab	
<i>Ephemera danica</i> Ab	
Other Ephem Ab	
Total no. of taxa	2
Total Relative Abundance	4

Plecoptera:

<i>Leuctra</i> Ab	2
<i>Isoperla</i> Ab	
<i>Protonemura</i> Ab	
<i>Amphinemura</i> Ab	
<i>Perla</i> Ab	1
<i>Dinocras</i> Ab	
Other Plecop Ab	
Other Plecop Ab	
Total no. of Taxa	2
Total Relative Abundance	3

Trichoptera:

Hydropsychidae Ab	
Polycentropodidae Ab	
<i>Rhyacophila</i> Ab	1
Philopotamidae Ab	
Limnephilidae Ab	
Sericostomatidae Ab	1
Glossosomatidae Ab	
Lepidostomatidae Ab	
Other Trichoptera Ab	
Total no. of Taxa	2
Total Relative Abundance	2

G.O.L.D:

<i>Lymnaea</i> (G) Ab	
<i>Potamopyrgus</i> (G) Ab	
<i>Planorbis</i> (G) Ab	
<i>Ancylus</i> (G) Ab	
<i>Physa</i> (G) Ab	
<i>Lumbriculus</i> (OI) Ab	
<i>Eiseniella</i> (OI) Ab	1
Tubificidae (OI) Ab	
Total no. of Taxa	2
Total Relative Abundance	2

Chironomidae (D) Ab

<i>Chironomus</i> (D) Ab	
Simuliidae (D) Ab	
<i>Dicranota</i> (D) Ab	
Tipulidae (D) Ab	1
Ceratopogonidae (D) Ab	
Other GOLD Ab	
Total no. of Taxa	2
Total Relative Abundance	2

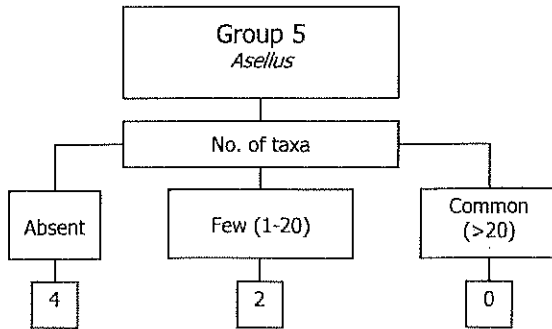
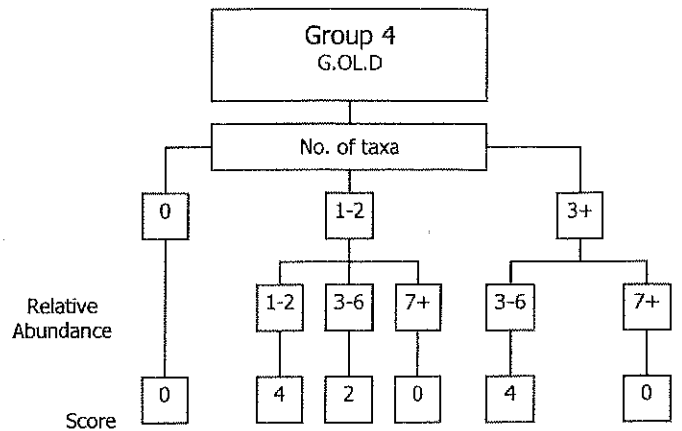
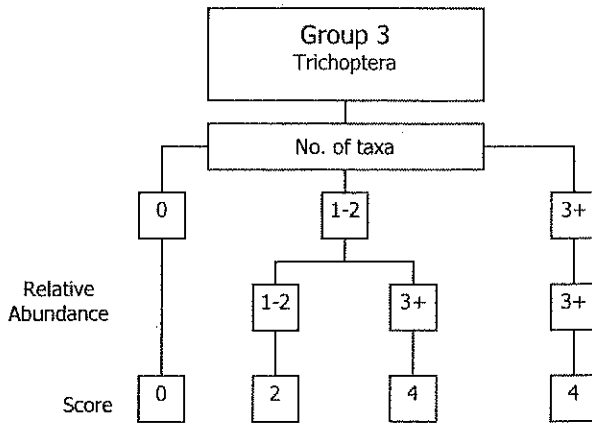
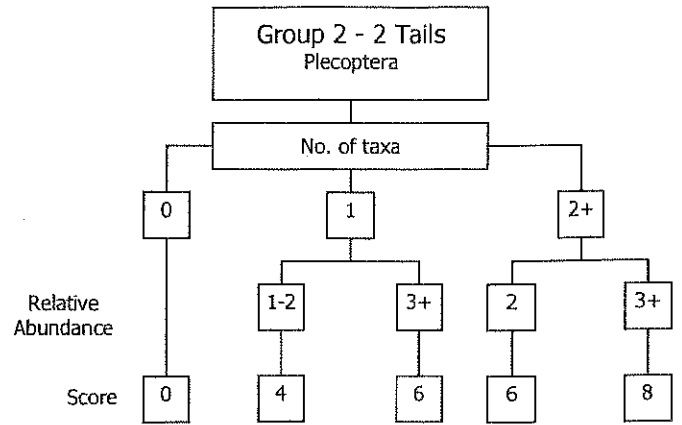
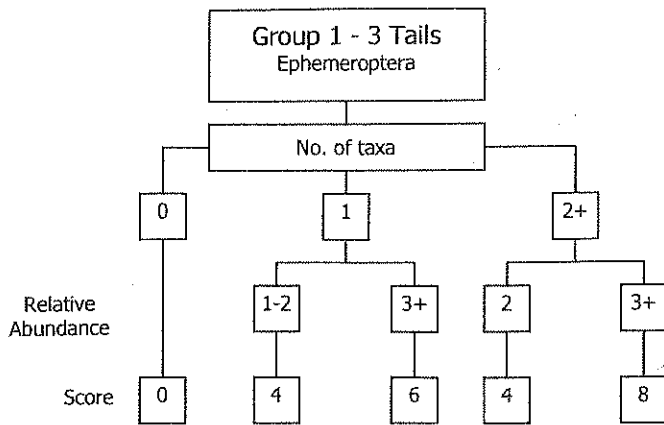
Asellus:

Absent	✓
Few/Low	
Common/Numerous	

NOTE: Asellus must be recorded as absent if none are found

NOTE *Baetis* is an Ephemeropteran and is the most commonly occurring invertebrate genus in streams in Ireland. It is vital that *Baetis* is not counted in SSRS. See Appendix B for more details on how to identify *Baetis*.

Step 1. Calculate the Index Score by circling the appropriate box representing the total number of taxa and the total abundance calculated from *each macroinvertebrate group* calculated from page 1 of the recording sheet and enter in to the boxes in Step 2.



Step 2

- a) Index Score Group 1
- b) Index Score Group 2
- c) Index Score Group 3
- d) Index Score Group 4
- e) Index Score Group 5

Step 3. Calculate the Total Index Score, the Average Index Score and the SSR Score using the boxes below

Total Index Score (TIS) sum (a+b+c+d+e)

Average Index Score (AIS) TIS/5 (5 for 5 groups)

SSR Score (AIS x 2)

Step 4. Assess the stream by comparing the final SSR score with the categories below and tick the appropriate box

> 7.25 Probably not at risk

> 6.5 - 7.25 Indeterminate Stream may be at risk

< 6.5 Stream at risk

Surveyor (signed): John Paul McEntee Name (print): JOHN PAUL MCENTEE Date: 15 / 04 / 21