

Galway Wastewater Strategy

(Galway Metropolitan Area, Athenry, and Moycullen)

The Galway Wastewater Strategy will assess wastewater treatment and network infrastructure in the Galway Metropolitan Area, Athenry, and Moycullen to determine what future investment will be required in the medium and long term, and to identify sustainable drainage strategies and solutions for the Study Area.

What is a wastewater strategy?

As our population and economy grows, so does the volume of wastewater. We must collect and treat this wastewater so that the treated water can be safely returned to the environment. The purpose of a Wastewater Strategy is to assess wastewater treatment and network infrastructure in a defined geographic area to identify what future investment will be required in the medium and long term. Having adequate wastewater infrastructure is essential to facilitate housing provision and commercial development and to support sustainable growth.

Challenges facing the Greater Galway Area in relation to wastewater collection and treatment include:

- Increase in population.
- Compliance challenges at existing wastewater treatment plants and sewerage networks.
- Wastewater treatment and network capacity requirements to deal with current and future wastewater needs.
- Pressures on the receiving waters from wastewater discharges.
- Climate change.

The aims of the Galway Wastewater Strategy

The principle aim of the Galway Wastewater Strategy is to assess wastewater treatment and network infrastructure in the study area to identify what future investment will be required in the medium and long term.

The study will aim to identify sustainable wastewater management and treatment strategies and to develop a prioritised options list for the project horizon of 2030, 2055 and 2080.

The aims of the Galway Wastewater Strategy are to:

- Support the future development of the study area by providing the necessary capacity in wastewater drainage, management and treatment systems.
- Enhance and protect the environment through effective wastewater management.
- Prioritise sustainable options for effective wastewater management that deliver multiple benefits.
- Identify key strategic options that will provide the necessary capacity in drainage, management and wastewater treatment systems up to 2080.
- Ensure options developed account for climate change.

The Study Area

The Galway Wastewater Strategy (GWS) study area comprises the Galway Metropolitan Area (GMA), Athenry, and Moycullen.



How will the Galway Wastewater Strategy be developed?

The Galway Wastewater Strategy will include an analysis of the existing wastewater infrastructure along with data gathering, population and economic growth assessments, strategic environmental assessment, consultation with interested stakeholders to identify medium and long-term solutions to the wastewater needs of the region.

The Galway Wastewater Strategy will deliver a sustainable strategy that will address the needs of wastewater infrastructure. The study will offer achievable, strategic, and sustainable drainage, management and treatment options, providing capacity to meet wastewater demand and support economic growth.

The sustainable drainage, management or treatment solution will be consistent with statutory obligations and regulatory drivers designed to meet both national and international environmental objectives outlined in the Water Framework Directive (WFD) and Urban Wastewater Treatment Directives (UWWTD).

Draft Galway Wastewater Strategy

(Galway Metropolitan Area, Athenry, and Moycullen)



The economic success of the Galway Metropolitan Area and surrounding areas under the National Spatial Strategy has led to very significant growth in these areas. The wastewater infrastructure is challenged to keep pace with this growth and the increased demand for new serviced land for housing, commercial development, and industry.

Current Challenges Facing Galway

- Increase in population.
- Compliance challenges at existing wastewater treatment plants and sewerage networks.
- Wastewater treatment and network capacity requirements to deal with current and future wastewater needs.
- Pressures on receiving waters from wastewater discharges.
- Climate Change.

What is a Wastewater Strategy?

The purpose of a Wastewater Strategy is to assess wastewater treatment and network infrastructure in a defined geographic area to identify what future investment will be required in the medium and long term. Having adequate wastewater infrastructure is essential to facilitate housing provision and commercial development and to support sustainable growth and to protect the environment.

What is the study area?

The Galway Wastewater Strategy study area comprises the Galway Metropolitan Area, Athenry, and Moycullen.

How is the study being developed?

The Draft Galway Wastewater Strategy will include:

1. Analysis of the existing wastewater infrastructure along with data gathering
2. Population and economic growth assessments.
3. Strategic environmental assessment.
4. Consultation with stakeholders and the public.

When will we Consult?

Consultation One:

The first round of consultation will take place from 26 September – 20 November 2024 and will seek feedback and comments on the Issues Paper, Strategic Environmental Assessment (SEA) Scoping Report and Appropriate Assessment (AA) Screening Report.

Consultation Two:

Feedback from consultation one will be considered in the development of the draft Galway Wastewater Strategy which will be published for consultation in 2025 along with the associated environmental reports.

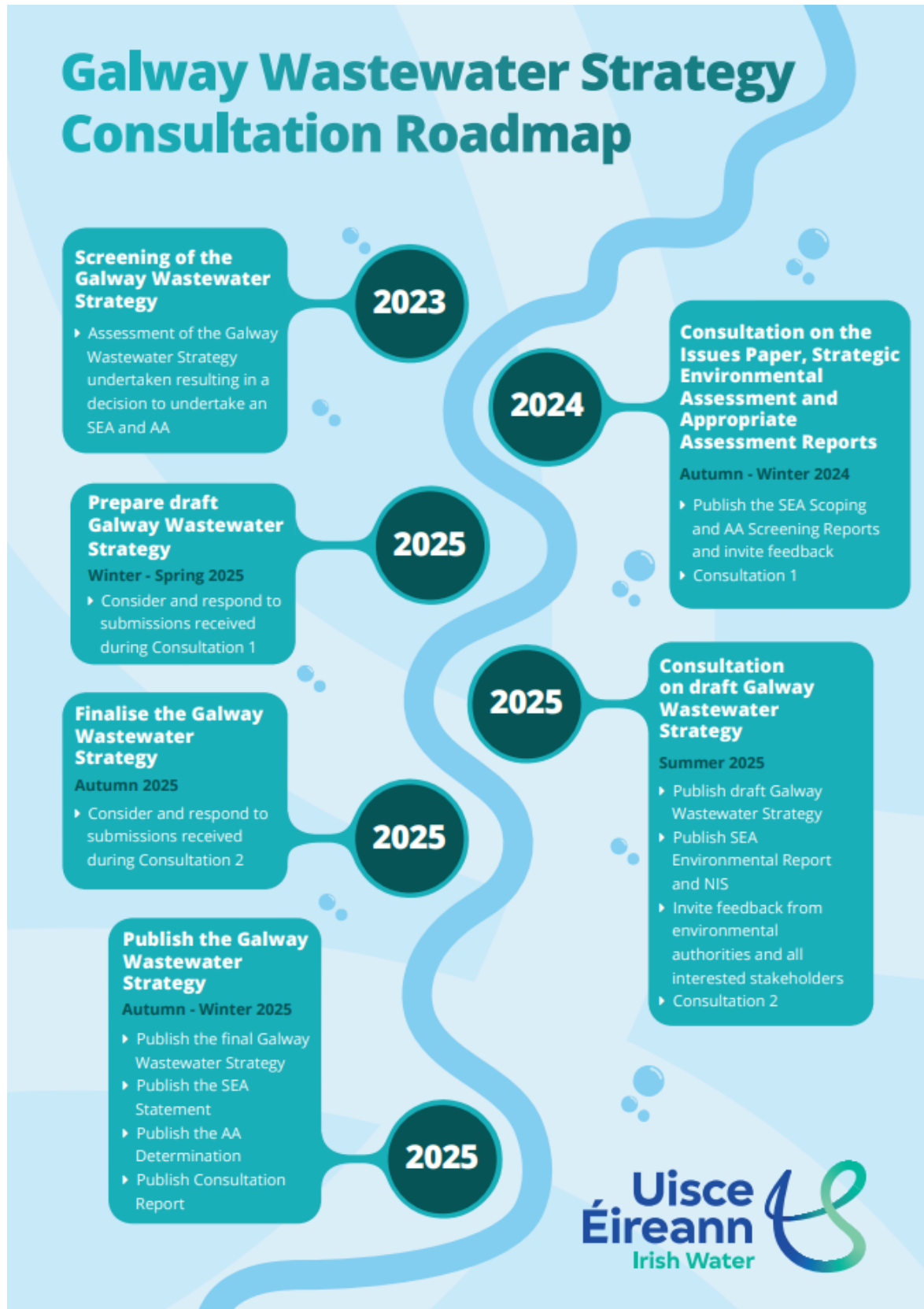
Where can I get more information?

Email: GWS@water.ie
Website: www.water.ie/gws



What is happening now?

Uisce Éireann is seeking feedback on the Galway Wastewater Strategy Issues Paper, the Strategic Environmental Assessment (SEA) Scoping Report, and the Appropriate Assessment Screening Report.



Consultation 1

Public consultation will be undertaken for eight weeks from 26 September to 20 November 2024. The Issues Paper, SEA Scoping and AA Screening can be viewed and downloaded at www.water.ie/GWS.

To make a submission:

Email: gws@water.ie

Post: Uisce Éireann, Galway Wastewater Strategy, 1 Galway Business Park, Upper Newcastle Road, Dangan, Galway H91 A3EF

All stakeholder feedback on this Issues Paper, the SEA Scoping Report, and the AA Screening Report will be reviewed and taken into account as we prepare a draft of the Galway Wastewater Strategy, the SEA Environmental Report, and the Natura Impact Statement.

Consultation Questions

In order to assist stakeholders in making a submission as part of this consultation, we invite feedback on the following consultation questions; however, feedback is not limited to these questions.

1. Do you have any suggestions that you would like Uisce Éireann to consider in the preparation of its Galway Wastewater Strategy?
2. The Galway Wastewater Strategy study area comprises the Galway Metropolitan Area, Athenry, and Moycullen. Do you have any comments on this?
3. Do you have any comments on the approach to the Strategic Environmental Assessment for the Galway Wastewater Strategy?
4. Section 2.1 in chapter 2 of the SEA Scoping Report outlines the objectives of the Galway Wastewater Strategy. Do you have any comments on these objectives?
5. Chapter 3 of the SEA Scoping Report sets out the current baseline environment conditions and future trends. The environmental issues are summarised in table 3.20.1. Do you have any comments on these?
6. Uisce Éireann has reviewed plans, policies and programmes relevant to the Galway Wastewater Strategy in chapter 4 of the SEA Scoping Report. Are there any others that should be considered?
7. Chapter 5 of the SEA Scoping Report sets out the environmental objectives that will be used to assess the Wastewater Strategy and its potential effects on the environment. Table 5.2.1 summarises these objectives. Have you any comments on these?
8. How would you like Uisce Éireann to communicate with you as the plan progresses?

Submissions will be acknowledged collated into a consultation report and responded to in the Draft Wastewater Strategy.

All submissions made on the SEA Scoping Report will be reviewed and relevant feedback incorporated into the environmental reports and the draft Galway Wastewater Strategy as appropriate. Submissions from individuals will be reported anonymously and feedback from organisations will be attributed to them.

Next Steps

Once the draft Galway Wastewater Strategy and associated Environmental Reports are developed by Uisce Éireann, we will commence the second round of public consultation in 2025 on the draft Galway Wastewater Strategy and associated Environmental Reports.