

SAFETY ALERT

Am I SAFE?

Unsafe Access/Egress Safety Alert

Revision: 1

Document No: **IW-HSQE-SA-53**

Approved By: James Cullen

1. What Happened?

Irish Water have noticed an increase in the frequency and occurrence of accidents/incidents in relation to unsafe access/egress.

The following are some examples:

Incident 1: An operative jumped from a weir onto a riverbed at a Water Treatment Plant intake to remove stones from around a screen. The operative subsequently landed on gravel and dislocated his knee.



Incident 2: Due to sedimentation build up, an operative was required to rod a pipeline to clear sediment from the RBC outfall. This pipeline was situated 5m into a river. This task/activity occurred several times a year. There was no safe access/egress provided to carry out this task/activity safely.

SAFETY ALERT

Am I SAFE?

Unsafe Access/Egress Safety Alert

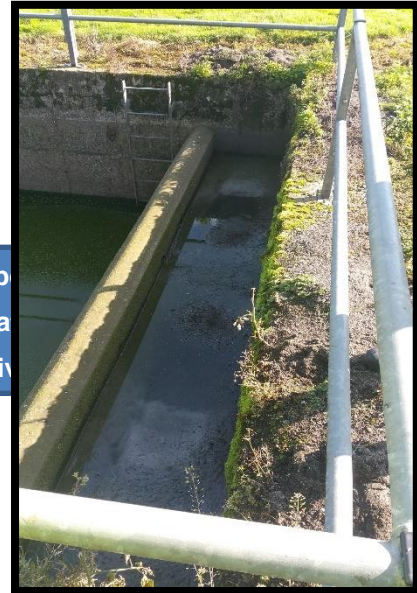
Revision: 1

Document No: IW-HSQE-SA-53

Approved By: James Cullen



Pipe
locat
riv



Incident 3: An operative was observed climbing through a handrail down into a channel around a storm water tank in order to clean the channel with a brush. There was no safe access/egress or suitable edge protection provided to prevent the operative from falling into the deeper section of the tank.

Channel that operative was observed standing in while carrying out cleaning and maintenance.



2. Further Actions

- Ensure task specific risk assessments are completed and ensure all potential

SAFETY ALERT

Am I SAFE?



Unsafe Access/Egress Safety Alert

Revision: 1

Document No: **IW-HSQE-SA-53**

Approved By: James Cullen

activities that your team may be exposed to are identified, risk assessed and communicated. Ensure access/egress is considered when completing the risk assessment.

- Ensure control measures are in place and are understood by all.
- Plan ahead. Carry out a full review of the work area and access routes before works commence.
- Planning should be in consultation with those undertaking the works. Access/Egress arrangements should be considered at design stage to minimise impact to the end users.
- Take your time. Where any unplanned/unforeseen changes in activity occurs, take time to consider and reassess any additional controls.
- If something seems unsafe or causes you concern – STOP and evaluate before proceeding.
- Consider developing toolbox talk and discuss the contents of this Safety Alert with all operatives.

3. Further Information

For further information on this safety alert please contact hsqe@water.ie

4. Distribution list

Internal		
Asset Operations <input checked="" type="checkbox"/>	Asset Delivery <input checked="" type="checkbox"/>	Asset Management <input type="checkbox"/>
All IW Staff <input type="checkbox"/>		
Other Please Specify _____		
External		

SAFETY ALERT



Unsafe Access/Egress Safety Alert

Revision: 1

Document No: **IW-HSQE-SA-53**

Approved By: James Cullen

Local Authority <input type="checkbox"/>	DBO <input type="checkbox"/>	Resident Engineers <input type="checkbox"/>
All Asset Delivery Contractors <input type="checkbox"/>		
Other Please Specify _____		