

# SAFETY ALERT

Am I SAFE?

## Temporary Working Platforms

Document No: IW-HSQE-SA-17

Revision:1.00

Approved By: Claire Lyons

### 1. What Happened?

The IW HSQE inspection programme has identified a significant number of HSQE findings relating to temporary work platforms on shuttering systems. Examples of some of these are: limited working space on platforms, inadequate access, missing or inadequate guardrails, no guardrail/edge protection at head of ladders during works, failure to completely plank out work platforms, standing or climbing on surfaces not designed for such use (due to working platforms not correct height), failure to use fall arrest systems, tools or material left underfoot and surfaces slippery from shuttering oil. We have also recorded in 2017, two near misses in relation to such working platforms, both of which were directly associated with no guardrail/edge protection at head of ladders during the works. The HSQE inspections highlight the necessity for a greater focus being placed on temporary working platforms used on shuttering systems on IW site.

#### **Examples of Work at height issues from IW HSQE inspections**



# SAFETY ALERT

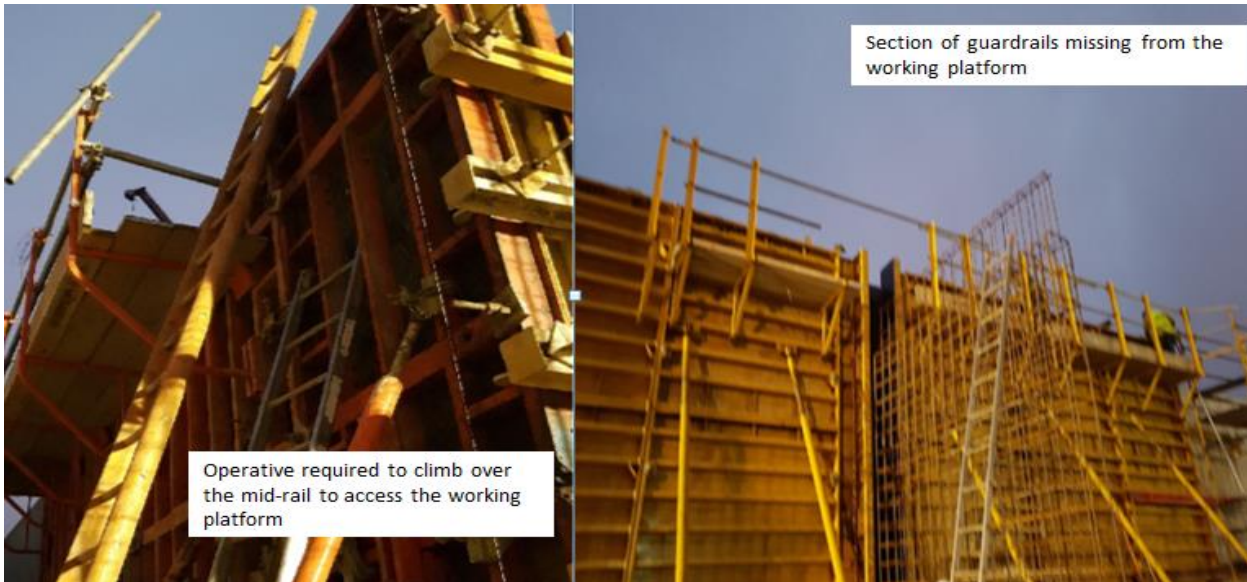
Am I SAFE?

## Temporary Working Platforms

Document No: IW-HSQE-SA-17

Revision:1.00

Approved By: Claire Lyons



## 2. Immediate Actions

- All work at height should be properly planned and organised.
- Temporary design certificate should be provided for all temporary working platforms associated with shuttering systems where required.
- Temporary working platforms should only be erected and altered by a competent person.
- Temporary working platforms should be properly inspected and maintained.
- Temporary working platforms should be of suitable & sufficient strength and rigidity for the purpose of which it is intended to be used.
- Temporary working platforms should be dismantled in such a way as to prevent accidental displacement.
- Careful consideration should be given to the selection of temporary work platforms so that a Safe System of Work is adopted. Safe System of Work to be adopted to ensure to take into account:
  - The risk, including the distance and consequences of any potential fall; What

# SAFETY ALERT



## Temporary Working Platforms

Document No: **IW-HSQE-SA-17**

Revision:1.00

Approved By: Claire Lyons

material and equipment may a person fall on? (working an relative low height but risk of falling on exposed reinforcing steel starter bars)

- Any deviations from the design are communicated to the relevant parties (Designer, Temp Works Designer, PSP, etc.)
- Safe access and egress to the working platform
- Number of persons working on the platform and equipment required
- Any supervision of workers that may be necessary, e.g. work equipment selected lower down the hierarchy of control, such as fall arrest equipment, will require a high level of supervision.
- Any emergency or rescue procedures that may be required, e.g. if persons falls while using a fall arrest system. It is not acceptable to rely on the emergency services. It needs to be covered in the risk assessment and planned prior to the start of the work activity.

### 3. Further Actions

Persons whom make decisions on site in relation to temporary works may be deemed as designers, also those employing, or in the control of, people undertaking design work are themselves deemed designers, and should be aware of their duties. Designers should take into account the general principles of prevention and constructability in their designs. The PSDP should ensure they co-ordinate the activities of designers in relation to temporary structures where required.

Contractors involved in this type of works should take into account the various shuttering working platforms available and ensure systems used comply with the Safety, Health and Welfare at Work (General Application) Regulations 2007, Part 4: Work at Height

# SAFETY ALERT

Am I SAFE?



## Temporary Working Platforms

Document No: IW-HSQE-SA-17

Revision:1.00

Approved By: Claire Lyons

### Examples of shuttering platforms systems available:



## 4. Further Information

For further information on this safety alert please contact [hsqe@water.ie](mailto:hsqe@water.ie)

## 5. Distribution list

Internal		
Asset Operations <input type="checkbox"/>	Asset Delivery <input checked="" type="checkbox"/>	Asset Strategy <input type="checkbox"/>
Asset Management <input type="checkbox"/>	All IW staff <input type="checkbox"/>	
Other Please Specify _____		

External		
Local Authority <input type="checkbox"/>	DBO <input checked="" type="checkbox"/>	Capital Contracts <input checked="" type="checkbox"/>
Relevant Framework Contractors <input checked="" type="checkbox"/>		
Other Please Specify _____		